



3 bedrooms



1 bathroom



2 receptions



South-East



On-Street Parking



EPC Band D

Freehold

Council Tax Band:

E £2,758.72 (2025/2026)

Local Authority:

St Albans City & District Council



Charming 3-bed home in conservation area with period features, modern finishes, private garden, and easy city centre, station and school access.

Description

Situated within the conservation area, this attractive early 1900's three-bedroom home offers a wonderful balance of period charm and modern style. With its characterful brick façade and sash windows, the property makes a welcoming first impression while retaining many original features inside. The ground floor includes a bright living room with a feature fireplace, a separate dining room also with a fireplace, and a modern fitted kitchen that opens directly onto the garden. The layout creates both a comfortable everyday living space and an inviting setting for entertaining. Upstairs, there are three well-proportioned bedrooms along with a recently updated bathroom. The home has been thoughtfully maintained, ensuring that character details sit seamlessly alongside contemporary finishes. Outside, the property enjoys a private rear garden with both lawn and patio areas, while to the front there is residents on-street parking.

Location

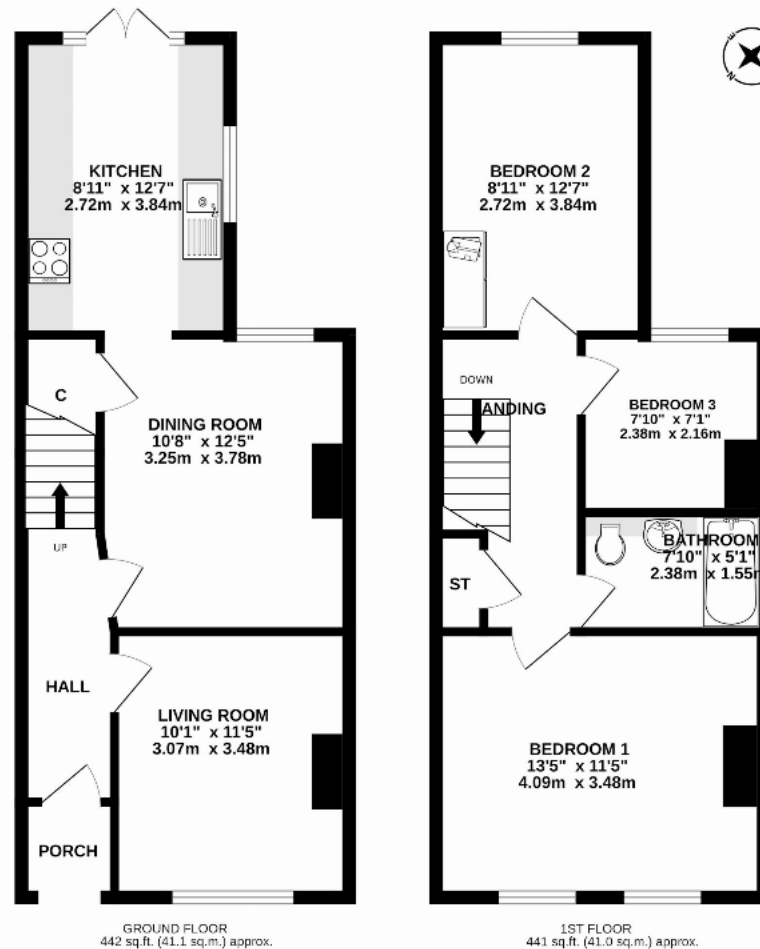
Ladysmith Road is located in the Garden Fields Conservation Area, north-west of St Albans. It's close to city centre amenities, well-regarded nurseries, and schools, and within walking distance of St Albans City station.

Buyers Information: - In compliance with the UK's Anti Money Laundering (AML) regulations, we are required to confirm the identity of all prospective buyers at the point of an offer being accepted and use a third party, Identity Verification System to do so. There is a nominal charge of £48 (per person) including VAT for this service. For more information, please refer to the terms and conditions section of our website.









TOTAL FLOOR AREA : 883 sq.ft. (82.1 sq.m.) approx.

This floor plan is for illustrative purposes only. The measurement and position of each element is approximate and must be viewed as such.

Important Information These particulars do not constitute an offer or contract in whole or part. The statements contained herein are made without responsibility on the part of Ashtons or the vendors and they cannot be relied upon as representatives of fact. In respect of floor plans, these are for illustrative purposes only. The measurement and position of each element is approximate and must be viewed as such. Intending purchasers should therefore satisfy themselves by inspection or otherwise as to their correctness. The vendors do not make or give, and neither Ashtons nor any person in their employment has any authority to make or give, any representation or warranty whatsoever in relation to this property. We offer a wide range of services through third party providers including solicitors, surveyors, removal firms, mortgage providers and EPC suppliers. We receive additional payments for administering suppliers quoting software and making referrals. You are not under any obligations to use these services and it is your discretion whether you choose to deal with these parties or your own preferred supplier. You should be aware the average payment we received in 2024 equated to £29.76 per referral.