


 3 Bedrooms

 1 Bathroom

 2 Receptions

 South-East

 On-Street Parking

 EPC Band C

Freehold

Council Tax Band:
E £2,758.72 (2025/2026)

Local Authority:
St Albans City & District Council



Charming bay-fronted 3-bed home in sought-after Bernards Heath, offering potential for further improvement (STPP).

Description

On approach, the handsome facade is impressive and inside, the beautifully presented and extended accommodation offers a welcoming entrance hall. The bright family room with a wood-burning stove leads to the open-plan dining room and an extended kitchen/breakfast room with French doors to the rear garden. The first floor features the principal bedroom at the front with built-in wardrobes and two additional bedrooms, all served by a modern family bathroom. A spacious loft with a Velux window offers potential for conversion, subject to permissions. The rear presents a sizeable South-Easterly facing garden with a large patio mainly laid to lawn, complemented by a large garden shed/summer house. An easement at the property's rear provides access for bins and window cleaning.

Location

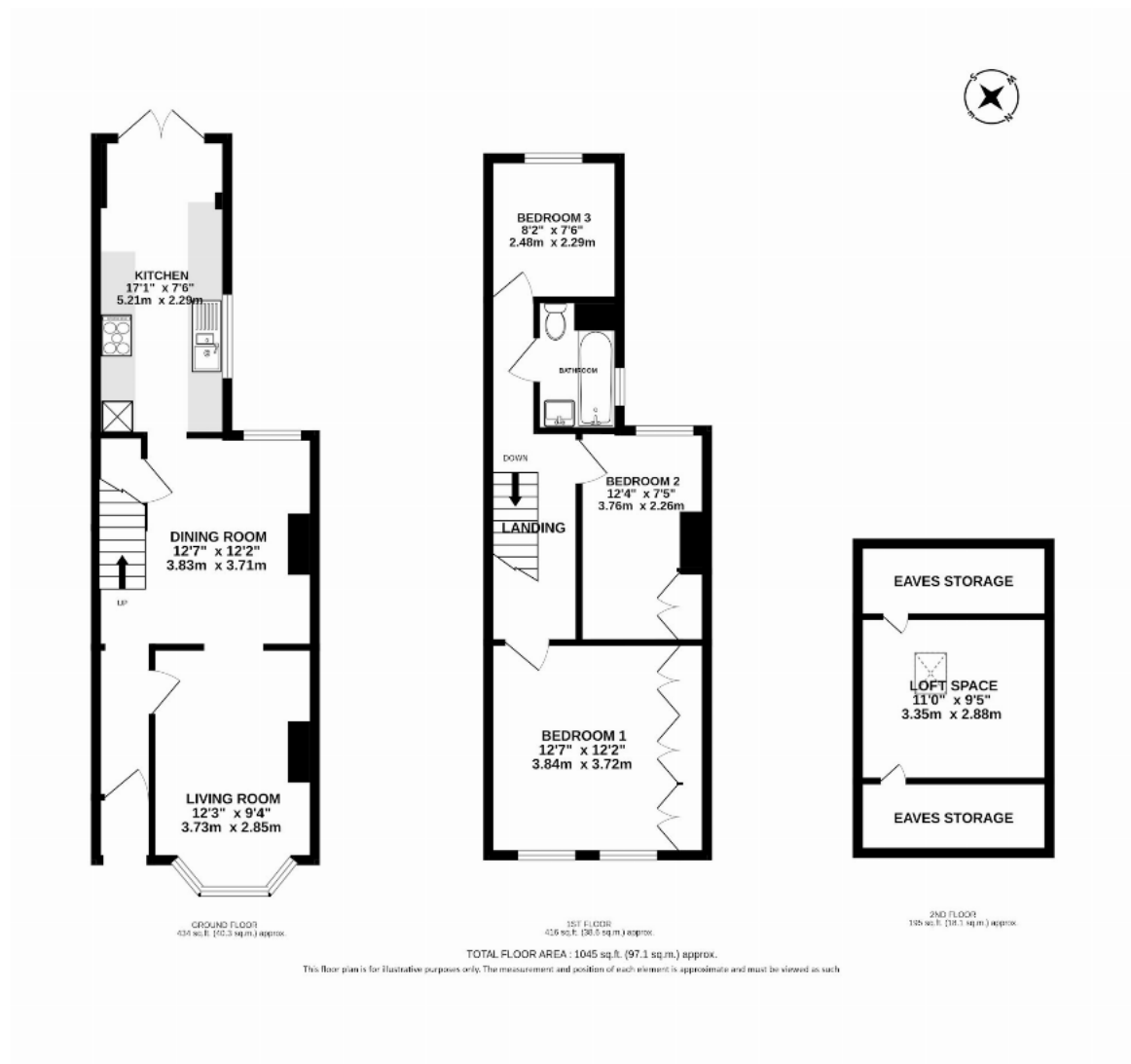
Heath Road is an easy walk to St Albans city centre and the mainline station with fast trains to London. Nearby are Bernards Heath, top schools, a local shop with post office services, and a cafe.

Buyers Information: - In compliance with the UK's Anti Money Laundering (AML) regulations, we are required to confirm the identity of all prospective buyers at the point of an offer being accepted and use a third party, Identity Verification System to do so. There is a nominal charge of £48 (per person) including VAT for this service. For more information, please refer to the terms and conditions section of our website.









Important Information These particulars do not constitute an offer or contract in whole or part. The statements contained herein are made without responsibility on the part of Ashtons or the vendors and they cannot be relied upon as representatives of fact. In respect of floor plans, these are for illustrative purposes only. The measurement and position of each element is approximate and must be viewed as such. Intending purchasers should therefore satisfy themselves by inspection or otherwise as to their correctness. The vendors do not make or give, and neither Ashtons nor any person in their employment has any authority to make or give, any representation or warranty whatsoever in relation to this property. We offer a wide range of services through third party providers including solicitors, surveyors, removal firms, mortgage providers and EPC suppliers. We receive additional payments for administering suppliers quoting software and making referrals. You are not under any obligations to use these services and it is your discretion whether you choose to deal with these parties or your own preferred supplier. You should be aware the average payment we received in 2024 equated to £29.76 per referral.