

 3 Bedrooms

 2 Bathrooms

 1 Reception

 Courtyard Garden

 Garage

 EPC Band D

Freehold

Council Tax Band:  
F £3,260.30 (2025/2026)

Local Authority:  
St Albans City & District Council





Three double bedroom townhouse in sought-after cul-de-sac in city centre, no onward chain.

### Description

This four-storey town house, situated on a private road in the heart of St. Albans historic centre, is just moments from the Cathedral and Verulamium Park. The City station is only 0.7 miles away. The ground floor features an entrance hall leading to a cloakroom with w/c, utility room, and integral garage. The first floor offers a fitted kitchen/breakfast room opening to a low-maintenance rear garden, and a spacious living/dining room with a west-facing Juliet balcony providing City views. The second floor has two well-proportioned double bedrooms and a family bathroom. The top floor includes a principal bedroom with an en-suite shower room and eaves storage. Parking is available in the garage.

### Location

Bowes Lyon Mews is a private modern development in the heart of St Albans. Whilst the City centre is on your doorstep, this property enjoys a peaceful and tranquil location.



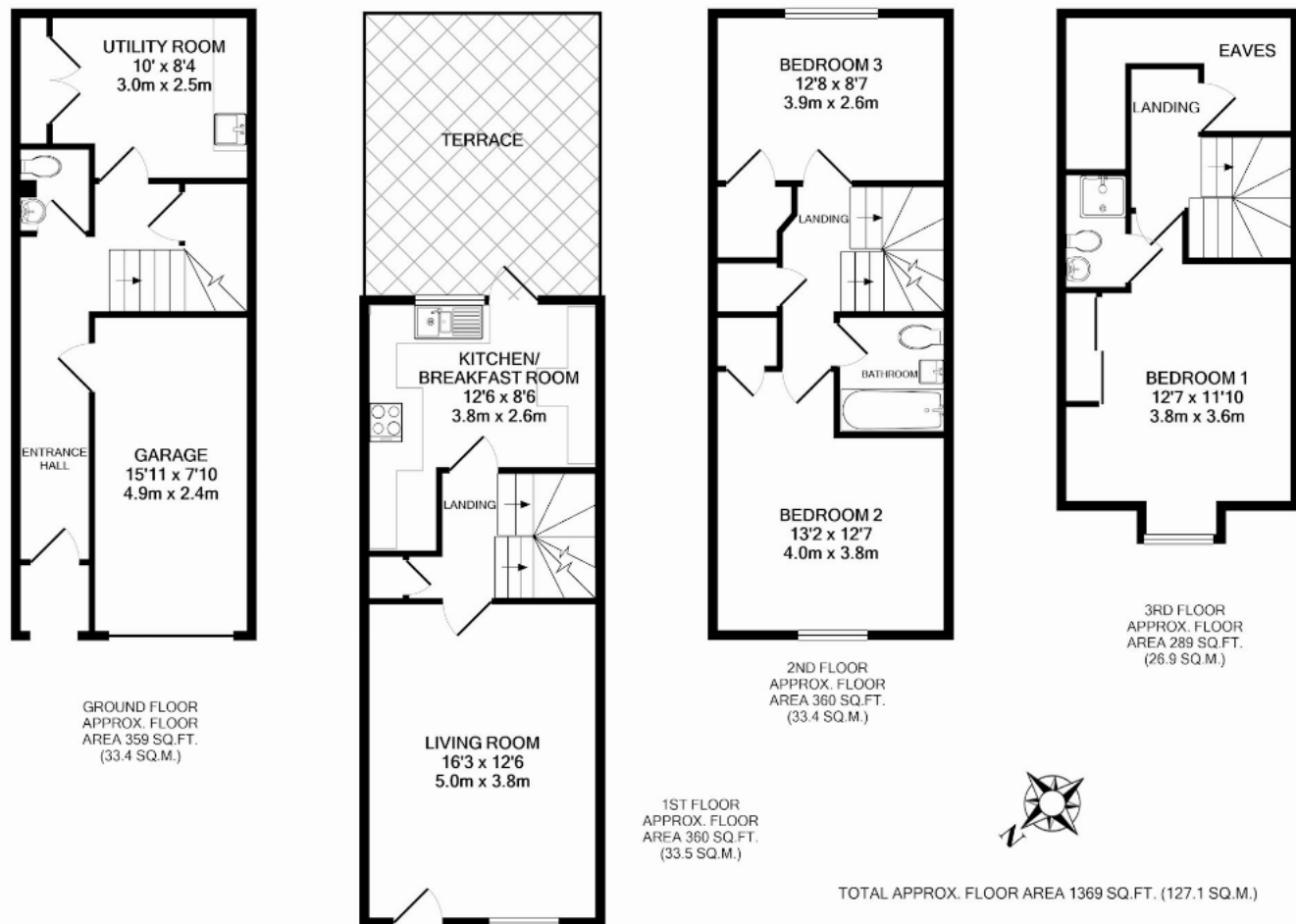
Buyers Information: - In compliance with the UK's Anti Money Laundering (AML) regulations, we are required to confirm the identity of all prospective buyers at the point of an offer being accepted and use a third party, Identity Verification System to do so. There is a nominal charge of £48 (per person) including VAT for this service. For more information, please refer to the terms and conditions section of our website.











This floor plan is for illustrative purposes only. The measurement and position of each element is approximate and must be viewed as such.

**Important Information** These particulars do not constitute an offer or contract in whole or part. The statements contained herein are made without responsibility on the part of Ashtons or the vendors and they cannot be relied upon as representatives of fact. In respect of floor plans, these are for illustrative purposes only. The measurement and position of each element is approximate and must be viewed as such. Intending purchasers should therefore satisfy themselves by inspection or otherwise as to their correctness. The vendors do not make or give, and neither Ashtons nor any person in their employment has any authority to make or give, any representation or warranty whatsoever in relation to this property. We offer a wide range of services through third party providers including solicitors, surveyors, removal firms, mortgage providers and EPC suppliers. We receive additional payments for administering suppliers quoting software and making referrals. You are not under any obligations to use these services and it is your discretion whether you choose to deal with these parties or your own preferred supplier. You should be aware the average payment we received in 2024 equated to £29.76 per referral.