


 3 Bedrooms

 1 Bathroom

 1 Reception

 South-East

 Off-Street Parking

 EPC Band C

Freehold

Local Authority:  
St Albans City & District Council



 **ashtons**  
for life's great moves

Willowside, London Colney, St. Albans, AL2 1DP  
Guide price of £535,000

Attractive semi-detached three-bedroom home with modern interiors, spacious living areas, and driveway parking.

### Description

Situated in a desirable residential area, this appealing three-bedroom semi-detached house offers well-proportioned accommodation over two floors, perfect for families, professionals, or those looking to upsize. The property features a spacious block-paved driveway providing off-street parking for two cars and an eye-catching façade for immediate kerb appeal. Inside, a welcoming hall leads to a ground floor cloakroom/WC and a modern fitted kitchen with contemporary units and ample workspace. At the rear, a dual-purpose living and dining room extends over 17ft, ideal for relaxation and entertaining, with sliding doors opening onto a low-maintenance south-east facing garden. The first floor includes a generous principal bedroom with built-in wardrobes, two additional well-sized bedrooms, and a stylish modern family bathroom. With approximately 804 sq. ft. (74.7 sq. m.) of living space, this charming home combines practical layout with modern presentation, conveniently located near local amenities, schools, and transport links.

### Location

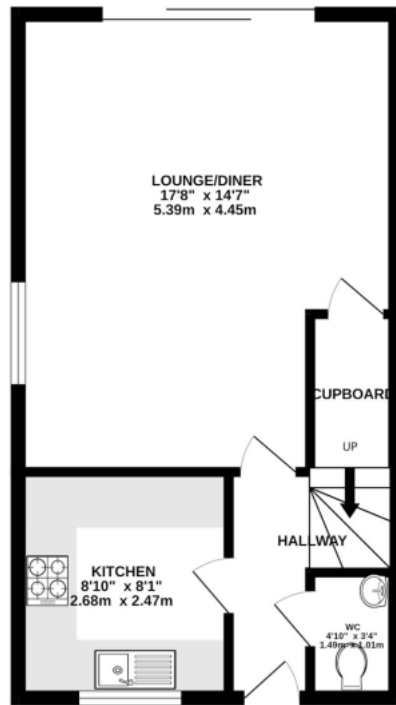
Willowside is ideally located near local amenities, schools, and excellent transport links. St Albans and Radlett railway stations, Sainsbury's, and Marks and Spencer are a short drive away. Enjoy lovely walks by the picturesque Colne River.



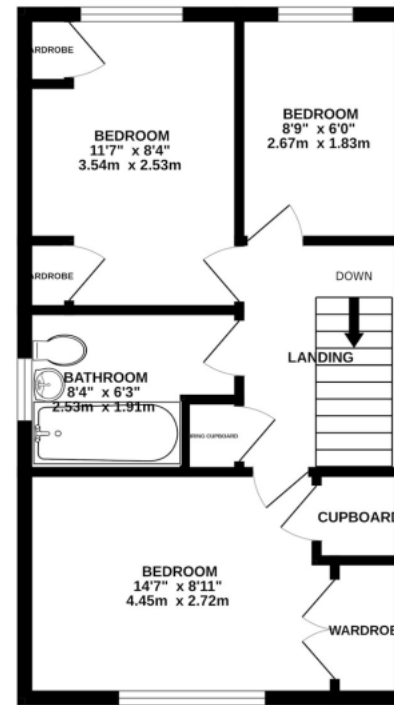
In compliance with the UK's Anti Money Laundering (AML) regulations, we are required to confirm the identity of all prospective buyers at the point of an offer being accepted and use a third party, Identity Verification System to do so. There is a nominal charge of £48 (per person) including VAT for this service. For more information, please refer to the terms and conditions section of our website.







GROUND FLOOR  
388 sq.ft. (36.0 sq.m.) approx.



1ST FLOOR  
388 sq.ft. (36.0 sq.m.) approx.

TOTAL FLOOR AREA: 804sq.ft. (74.7 sq.m.) approx.

This floor plan is for illustrative purposes only. The measurement and position of each element is approximate and must be viewed as such

**Important Information** These particulars do not constitute an offer or contract in whole or part. The statements contained herein are made without responsibility on the part of Ashtons or the vendors and they cannot be relied upon as representatives of fact. In respect of floor plans, these are for illustrative purposes only. The measurement and position of each element is approximate and must be viewed as such. Intending purchasers should therefore satisfy themselves by inspection or otherwise as to their correctness. The vendors do not make or give, and neither Ashtons nor any person in their employment has any authority to make or give, any representation or warranty whatsoever in relation to this property. We offer a wide range of services through third party providers including solicitors, surveyors, removal firms, mortgage providers and EPC suppliers. We receive additional payments for administering suppliers quoting software and making referrals. You are not under any obligations to use these services and it is your discretion whether you choose to deal with these parties or your own preferred supplier. You should be aware the average payment we received in 2024 equated to £29.76 per referral.