
 2 Bedrooms

 1 Bathroom

 2 Receptions

 Private Garden

 Allocated Parking

Freehold

Council Tax Band:
E £2,894.66 (2026/2027)

Local Authority:
St Albans District Council



 **ashtons**
for life's great moves

Prospect Road, St Albans, AL1 2AT
Guide price of £625,000

A well-presented two bedroom terraced house situated in a prime St Albans turning.

Description

Situated on the sought-after Prospect Road, this beautifully arranged two-bedroom home with an additional study/third bedroom offers flexible living space ideal for modern lifestyles. Thoughtfully laid out across three levels, the property combines practicality with contemporary comfort, making it perfectly suited to professionals, young families, or downsizers seeking versatile accommodation close to the heart of St Albans. The lower ground floor features a spacious kitchen/dining area, creating an inviting hub for entertaining and everyday living, complemented by a convenient WC. The ground floor hosts a bright and airy living room alongside a generous study/bedroom, ideal as a home office, guest room, or nursery. On the first floor are two well-proportioned bedrooms and a family bathroom, all centred around a practical landing area with additional wardrobe storage. Externally, the property benefits from a large private garden, providing excellent outdoor space. A further advantage is the inclusion of two allocated parking spaces, a highly desirable feature in this popular residential location. Offering well-balanced accommodation and excellent flexibility throughout, this is a superb opportunity to acquire a stylish home in a prime St Albans setting.

Location

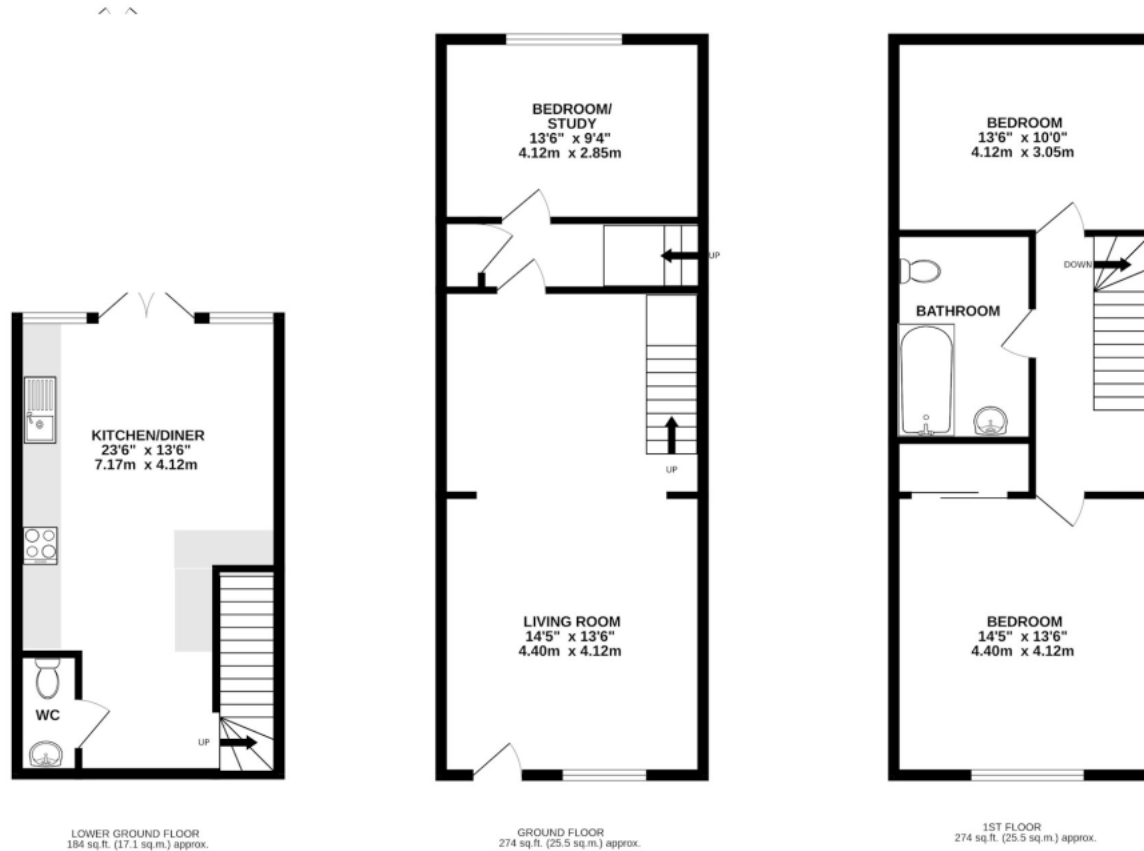
Prospect Road is located at the bottom of Holywell Hill, close to Verulamium Park and within walking distance of St Albans' extensive range of amenities. Abbey Flyer Station is close by, providing train services to Watford Junction.

In compliance with the UK's Anti Money Laundering (AML) regulations, we are required to confirm the identity of all prospective buyers at the point of an offer being accepted and use a third party, Identity Verification System to do so. There is a nominal charge of £48 (per person) including VAT for this service. For more information, please refer to the terms and conditions section of our website.









TOTAL FLOOR AREA: 733 sq.ft. (68.1 sq.m.) approx.

This floor plan is for illustrative purposes only. The measurement and position of each element is approximate and must be viewed as such

Important Information These particulars do not constitute an offer or contract in whole or part. The statements contained herein are made without responsibility on the part of Ashtons or the vendors and they cannot be relied upon as representatives of fact. In respect of floor plans, these are for illustrative purposes only. The measurement and position of each element is approximate and must be viewed as such. Intending purchasers should therefore satisfy themselves by inspection or otherwise as to their correctness. The vendors do not make or give, and neither Ashtons nor any person in their employment has any authority to make or give, any representation or warranty whatsoever in relation to this property. We offer a wide range of services through third party providers including solicitors, surveyors, removal firms, mortgage providers and EPC suppliers. We receive additional payments for administering suppliers quoting software and making referrals. You are not under any obligations to use these services and it is your discretion whether you choose to deal with these parties or your own preferred supplier. You should be aware the average payment we received in 2024 equated to £29.76 per referral.