

 3 Bedrooms

 1 Bathroom

 2 Receptions

 Large Garden

 Driveway

 EPC Band D

Freehold

Council Tax Band:
F £3,420.96 (2026/27)

Local Authority:
St Albans Council



 **ashtons**
for life's great moves

Seymour Road, St Albans, AL3 5HW
Guide price of **£1,100,000**

Remodelled detached three bedroom home with impressive garden, walking distance to city centre and mainline station.

Description

This lovely three-bedroom detached house has been extensively renovated and extended by its current owners. Set back from the road with a gravel driveway for two cars, the front door opens into a bright entrance hall leading to a stunning open-plan space with underfloor heating. Full height glazing and sliding doors offer lovely garden views. The kitchen, with integrated appliances like fridge, double oven and microwave, features stone work surfaces and a large island. A rooflight brings natural light over the living area, connecting to a reception room with a multi-fuel stove. A utility room is accessed from the kitchen. Upstairs, the largest bedroom has fitted storage, and the two rear rooms have low-silled windows. The bathroom includes a separate bath and shower. The loft has potential for conversion into a fourth bedroom with en-suite. The garden, approximately 100 feet, is relandscaped with mature trees and features a Garden Room with bi-fold doors. Plans are available to view.

Location

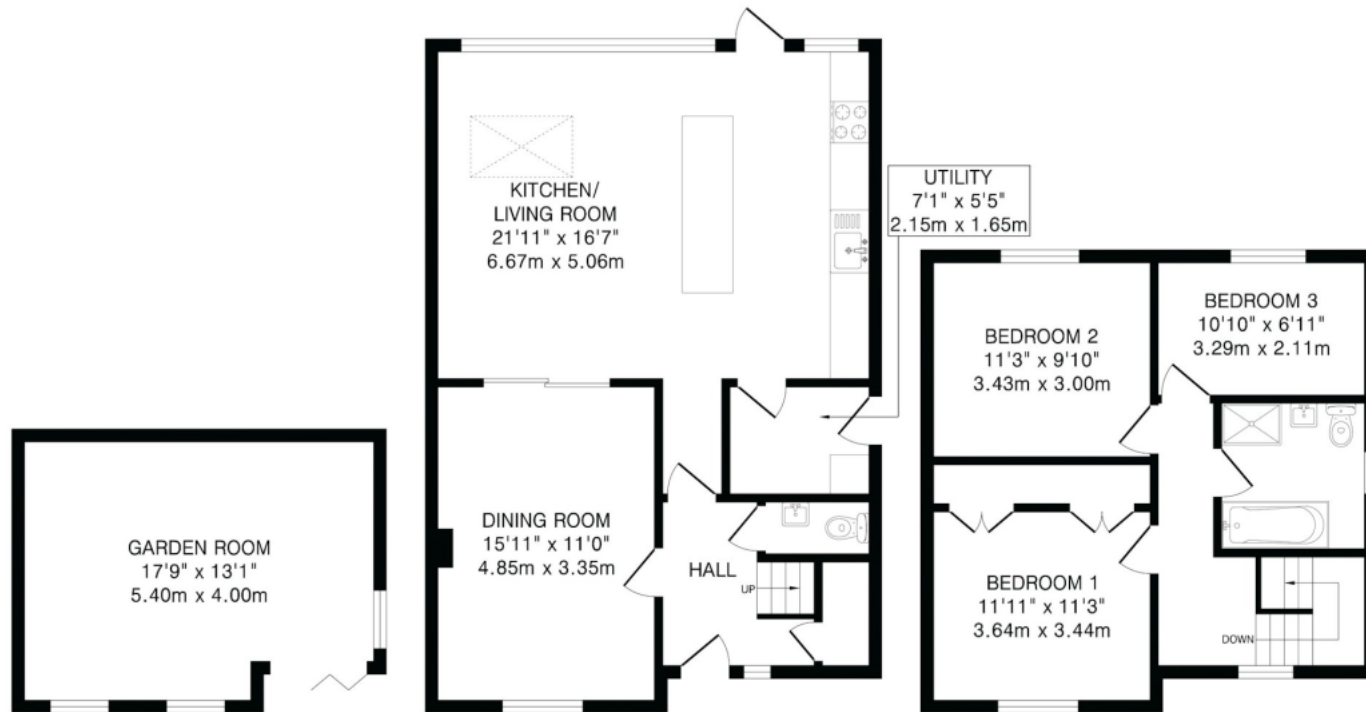
Seymour Road is north of the city centre, offering easy access to amenities and St Albans City Station with quick London links. Close to Bernards Heath, a local shop, and top schools, including STAGS, just over half a mile away.



Buyers Information: - In compliance with the UK's Anti Money Laundering (AML) regulations, we are required to confirm the identity of all prospective buyers at the point of an offer being accepted and use a third party, Identity Verification System to do so. There is a nominal charge of £48 (per person) including VAT for this service. For more information, please refer to the terms and conditions section of our website.







Outbuilding
220 sq.ft. (20.4 sq.m) approx.

Ground Floor
702 sq.ft. (65.1 sq.m) approx.

First Floor
467 sq.ft. (43.4 sq.m) approx.

TOTAL FLOOR AREA: 1389 sq.ft. (128.9 sq.m) approx.

This floorplan is for illustration purposes only. The measurements and position of each element are approximate and must be viewed as such.

Important Information These particulars do not constitute an offer or contract in whole or part. The statements contained herein are made without responsibility on the part of Ashtons or the vendors and they cannot be relied upon as representatives of fact. In respect of floor plans, these are for illustrative purposes only. The measurement and position of each element is approximate and must be viewed as such. Intending purchasers should therefore satisfy themselves by inspection or otherwise as to their correctness. The vendors do not make or give, and neither Ashtons nor any person in their employment has any authority to make or give, any representation or warranty whatsoever in relation to this property. We offer a wide range of services through third party providers including solicitors, surveyors, removal firms, mortgage providers and EPC suppliers. We receive additional payments for administering suppliers quoting software and making referrals. You are not under any obligations to use these services and it is your discretion whether you choose to deal with these parties or your own preferred supplier. You should be aware the average payment we received in 2024 equated to £29.76 per referral.