

 1 Bedroom

 1 Bathroom

 1 Reception

 Allocated Parking

 EPC Band D

Leasehold (87 years remaining)

Service Charge:
£1,600.00 per annum

Ground Rent:
£125.00 per annum

Council Tax Band:
C £2,105.21 (2026/2027)

Local Authority:
St Albans City & District Council



 **ashtons**
for life's great moves

Brooklands Court, Hatfield Road, St. Albans, AL1 3NS
Guide price of £295,000

Well-presented 1-bed ground floor apartment, ideally located for St Albans city centre and mainline station.

Description

With easy access via the secure communal hall, the front door leads into a spacious entrance hall with a large storage cupboard and a contemporary bathroom. The accommodation further includes a bright open-plan kitchen/living room with a bay window. The kitchen is well equipped with ample storage and several built-in appliances. The sizeable double bedroom benefits from fitted wardrobes and has ample space for a desk. Outside, there is an allocated parking space and additional visitors parking.

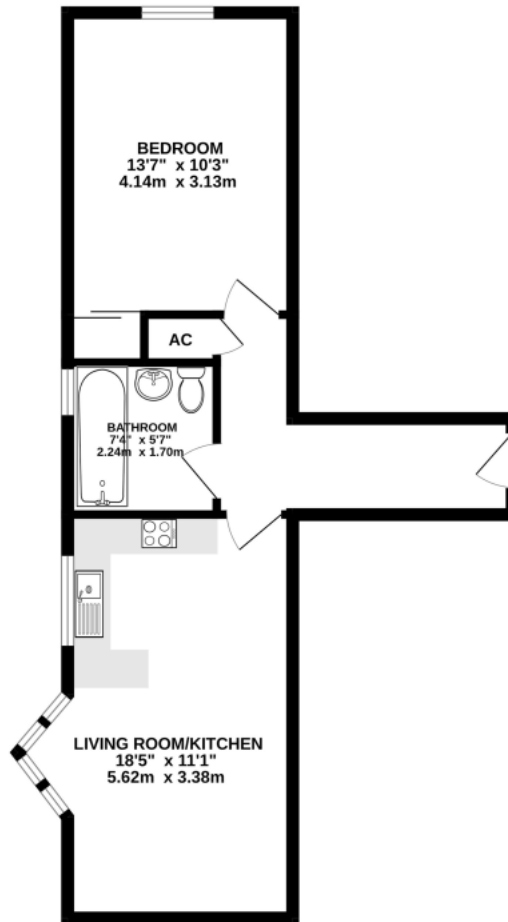
Location

Brooklands Court on Hatfield Road is close to St Albans' amenities and a short walk to the mainline station with fast rail links to central London.



Buyers Information: - In compliance with the UK's Anti Money Laundering (AML) regulations, we are required to confirm the identity of all prospective buyers at the point of an offer being accepted and use a third party, Identity Verification System to do so. There is a nominal charge of £48 (per person) including VAT for this service. For more information, please refer to the terms and conditions section of our website.





TOTAL FLOOR AREA : 475 sq.ft. (44.1 sq.m.) approx.

This floor plan is for illustrative purposes only. The measurement and position of each element is approximate and must be viewed as such

Important Information These particulars do not constitute an offer or contract in whole or part. The statements contained herein are made without responsibility on the part of Ashtons or the vendors and they cannot be relied upon as representatives of fact. In respect of floor plans, these are for illustrative purposes only. The measurement and position of each element is approximate and must be viewed as such. Intending purchasers should therefore satisfy themselves by inspection or otherwise as to their correctness. The vendors do not make or give, and neither Ashtons nor any person in their employment has any authority to make or give, any representation or warranty whatsoever in relation to this property. We offer a wide range of services through third party providers including solicitors, surveyors, removal firms, mortgage providers and EPC suppliers. We receive additional payments for administering suppliers quoting software and making referrals. You are not under any obligations to use these services and it is your discretion whether you choose to deal with these parties or your own preferred supplier. You should be aware the average payment we received in 2024 equated to £29.76 per referral.