
 2 Bedrooms

 1 Bathroom

 1 Reception

 EPC Band D

Leasehold (993 years remaining)

Council Tax Band:
D £2,368.36 (2026/2027)

Local Authority:
St Albans City & District Council



 **ashtons**
for life's great moves

152 London Road, St Albans, AL1 1PQ
Guide price of £400,000

High quality 2 double bedroom ground floor apartment, ideally located a short walk from the town centre and mainline train station.

Description

A unique two-bedroom property offering approximately 608 sq. ft. of well-arranged accommodation, ideally positioned on London Road with excellent access to local amenities and transport links, sold with no onward chain. This home boasts a spacious open-plan living area measuring 19'0 x 14'10, providing a versatile space for relaxing and entertaining. The living room features a modern fitted kitchen area with integrated cooking facilities, creating a sociable heart to the home. Large windows allow natural light to flood the room, enhancing the bright and airy feel. The property offers two well-proportioned bedrooms, each approximately 12'1 in length, perfect as double bedrooms, guest rooms, or a home office. Bedroom 1 benefits from a generous width, while bedroom 2 offers built-in storage potential. A family bathroom off the hallway includes a bathtub with overhead shower, wash basin, and WC, finished in a clean style. The layout includes a central hallway with space for coats and storage.

Location

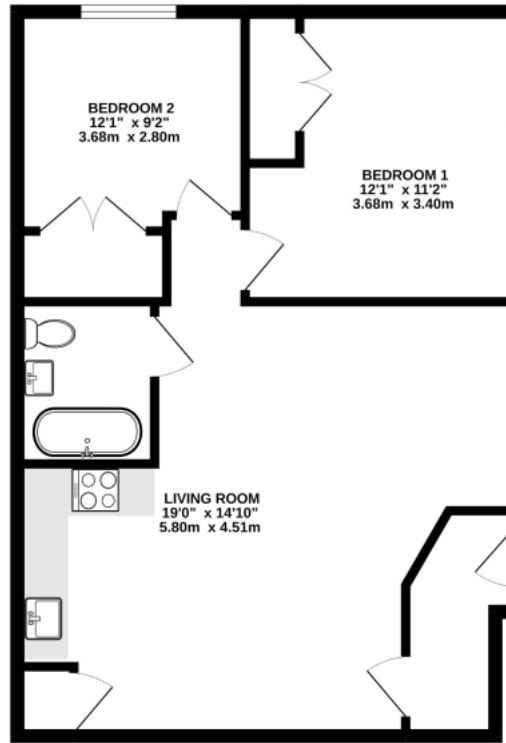
Ideally located within 0.5 miles of St Albans City Station which offers fast train links into London St Pancras and the City beyond. There are local restaurants and coffee shops on the doorstep, as is the Odyssey Cinema and bustling city.



Buyers Information: - In compliance with the UK's Anti Money Laundering (AML) regulations, we are required to confirm the identity of all prospective buyers at the point of an offer being accepted and use a third party, Identity Verification System to do so. There is a nominal charge of £48 (per person) including VAT for this service. For more information, please refer to the terms and conditions section of our website.







TOTAL FLOOR AREA: 608sq.ft. (56.5 sq.m.) approx.

This floor plan is for illustrative purposes only. The measurement and position of each element is approximate and must be viewed as such

Important Information These particulars do not constitute an offer or contract in whole or part. The statements contained herein are made without responsibility on the part of Ashtons or the vendors and they cannot be relied upon as representatives of fact. In respect of floor plans, these are for illustrative purposes only. The measurement and position of each element is approximate and must be viewed as such. Intending purchasers should therefore satisfy themselves by inspection or otherwise as to their correctness. The vendors do not make or give, and neither Ashtons nor any person in their employment has any authority to make or give, any representation or warranty whatsoever in relation to this property. We offer a wide range of services through third party providers including solicitors, surveyors, removal firms, mortgage providers and EPC suppliers. We receive additional payments for administering suppliers quoting software and making referrals. You are not under any obligations to use these services and it is your discretion whether you choose to deal with these parties or your own preferred supplier. You should be aware the average payment we received in 2024 equated to £29.76 per referral.