



4 bedrooms



3 bathrooms



3 receptions



150ft Garden



Multiple Spaces off  
Street



EPC Band D

Freehold

Council Tax Band:

F £3,386.39 (2025/2026)

Local Authority:

St Albans City & District Council





Outstanding remodelled four-bedroom family home in a peaceful cul-de-sac, featuring a bespoke, impeccable finish. Exceptionally extended and modernised by current owners.

### Description

Set well back from the road on a generous plot, the property offers a handsome frontage and is ideally situated within easy reach of highly regarded schools and excellent transport links, including swift access to the main motorway network. The interior of the home is bathed in natural light, enhanced by large windows and a sophisticated, neutral colour palette that amplifies the sense of space and elegance throughout. At the core of the home lies an exceptional open-plan kitchen, living, and dining area—designed with both functionality and style in mind. This impressive space is fitted with high-quality units and integrated appliances, making it ideal for everyday living as well as entertaining guests. The ground floor also includes a formal reception room, a modern cloakroom, and a well-appointed utility/boot room, all finished to an impeccable standard. On the first floor, the layout provides three well-proportioned double bedrooms and a contemporary family bathroom. The top floor is dedicated to a luxurious principal bedroom suite, complete with a sleek and stylish wet room. The rear garden is a standout feature, stretching to approximately 150 feet and professionally landscaped to create a tranquil outdoor retreat. To the front, a spacious driveway provides ample off-street parking for multiple vehicles.

### Location

Located in St Stephens Parish, 1.5 miles south of the city center. Convenient for St Columba's College on King Harry Lane and good local

Buyers Information: - In compliance with the UK's Anti Money Laundering (AML) regulations, we are required to confirm the identity of all prospective buyers at the point of an offer being accepted and use a third party, Identity Verification System to do so. There is a nominal charge of £48 (per person) including VAT for this service. For more information, please refer to the terms and conditions section of our website.



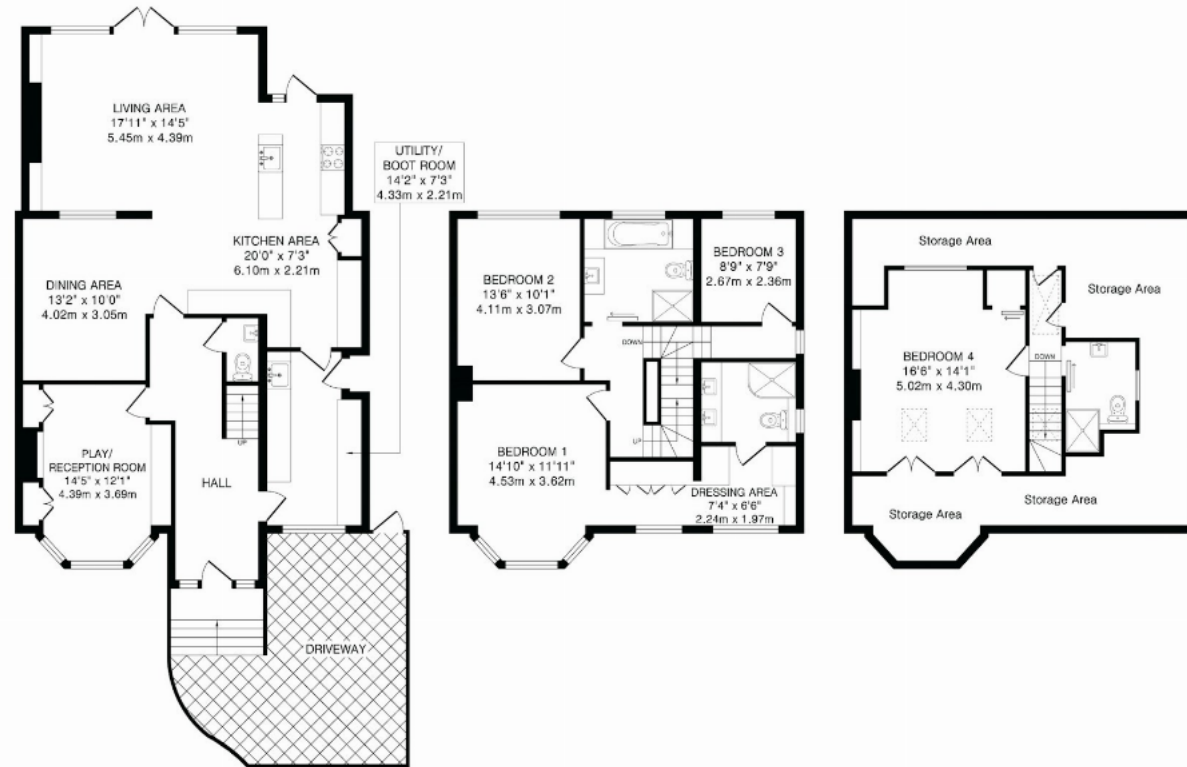












Ground Floor  
1084 sq.ft.(100.7 sq.m)approx.

First Floor  
712 sq.ft.(66.1 sq.m)approx.

Second Floor  
712 sq.ft.(66.1 sq.m)approx.

TOTAL FLOOR AREA: 2508 sq.ft.(232.9 sq.m)approx.  
This floorplan is for illustration purposes only. The measurements and position of each element are approximate and must be viewed as such.

**Important Information** These particulars do not constitute an offer or contract in whole or part. The statements contained herein are made without responsibility on the part of Ashtons or the vendors and they cannot be relied upon as representatives of fact. In respect of floor plans, these are for illustrative purposes only. The measurement and position of each element is approximate and must be viewed as such. Intending purchasers should therefore satisfy themselves by inspection or otherwise as to their correctness. The vendors do not make or give, and neither Ashtons nor any person in their employment has any authority to make or give, any representation or warranty whatsoever in relation to this property. We offer a wide range of services through third party providers including solicitors, surveyors, removal firms, mortgage providers and EPC suppliers. We receive additional payments for administering suppliers quoting software and making referrals. You are not under any obligations to use these services and it is your discretion whether you choose to deal with these parties or your own preferred supplier. You should be aware the average payment we received in 2024 equated to £29.76 per referral.