 2 bedrooms

 1 bathroom

 1 reception

 EPC Band D

Freehold

Council Tax Band:
D £2,257.13 (2025/2026)

Local Authority:
St Albans City & District Council



A beautifully presented 2-bedroom Victorian terraced house with an 80ft rear garden, located near Bernards Heath Junior School and within easy walking distance of St Albans mainline station and City centre.

Description

This Victorian property has enjoyed tasteful refurbishment, combining period features with modern décor throughout. The ground floor offers ample reception space with an open plan lounge/dining room providing bright and spacious living. The recently renovated kitchen, equipped with modern appliances, enjoys the same sunny aspect. Additionally, bespoke storage units have been added underneath the stairs. On the first floor, a large principal bedroom and one further good-sized bedroom are found, serviced by the family bathroom, presented in the same modern décor as the rest of the property. The property also benefits from a spacious boarded loft with shelving. Externally, there is on-street parking and a long, manicured garden mainly laid to lawn, with a patio area and shed to the rear.

Location

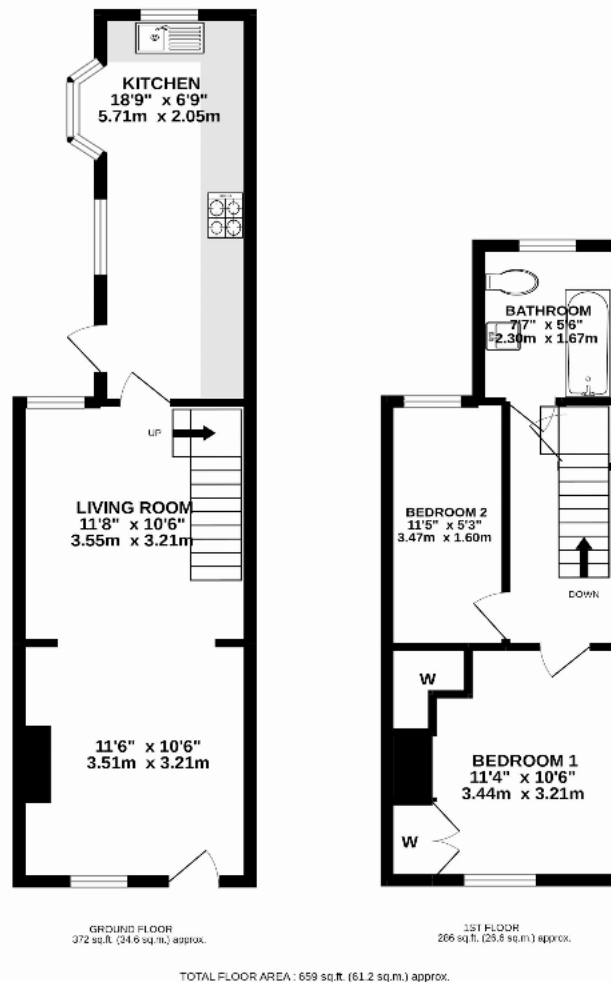
Upper Culver Road is conveniently located near St Albans city centre amenities & the mainline station. Highly regarded schools are nearby, and Bernards Heath's open space is on the doorstep.



Buyers Information: - In compliance with the UK's Anti Money Laundering (AML) regulations, we are required to confirm the identity of all prospective buyers at the point of an offer being accepted and use a third party, Identity Verification System to do so. There is a nominal charge of £48 (per person) including VAT for this service. For more information, please refer to the terms and conditions section of our website.







This floor plan is for illustrative purposes only. The measurement and position of each element is approximate and must be viewed as such

Important Information These particulars do not constitute an offer or contract in whole or part. The statements contained herein are made without responsibility on the part of Ashtons or the vendors and they cannot be relied upon as representatives of fact. In respect of floor plans, these are for illustrative purposes only. The measurement and position of each element is approximate and must be viewed as such. Intending purchasers should therefore satisfy themselves by inspection or otherwise as to their correctness. The vendors do not make or give, and neither Ashtons nor any person in their employment has any authority to make or give, any representation or warranty whatsoever in relation to this property. We offer a wide range of services through third party providers including solicitors, surveyors, removal firms, mortgage providers and EPC suppliers. We receive additional payments for administering suppliers quoting software and making referrals. You are not under any obligations to use these services and it is your discretion whether you choose to deal with these parties or your own preferred supplier. You should be aware the average payment we received in 2024 equated to £29.76 per referral.