



3 bedrooms



2 bathrooms



1 reception



Communal



Residents Parking



EPC Band C

Leasehold

Council Tax Band:

E £2,865.41 (2025/2026)

Local Authority:

St Albans City & District Council



First-floor 3-bed apartment in the coveted King Harry Park, featuring spacious, comfortable living areas. Exclusively for residents 55+.

Description

The property boasts a spacious dining room, perfect for entertaining, with direct access to a charming balcony - ideal for enjoying your morning coffee or relaxing outdoors. The adjacent kitchen is well-appointed, providing ample storage and workspace, complemented by a separate utility room for added convenience. The apartment features three generously sized bedrooms, including a principal bedroom with built-in wardrobes and a private en-suite bathroom. The remaining two double bedrooms also benefit from built-in storage and large windows that flood the space with natural light. There is an additional contemporary bathroom suite accessed via the bright and spacious hallway. Milton House occupants also enjoy a residents' lounge, access to communal gardens, and generous parking provisions.

Location

King Harry Park is in St Stephens Parish, south of the City, 1.5 miles from the centre with a nearby bus stop. Easy London commute by car with M25 and M1 junctions a short drive away.

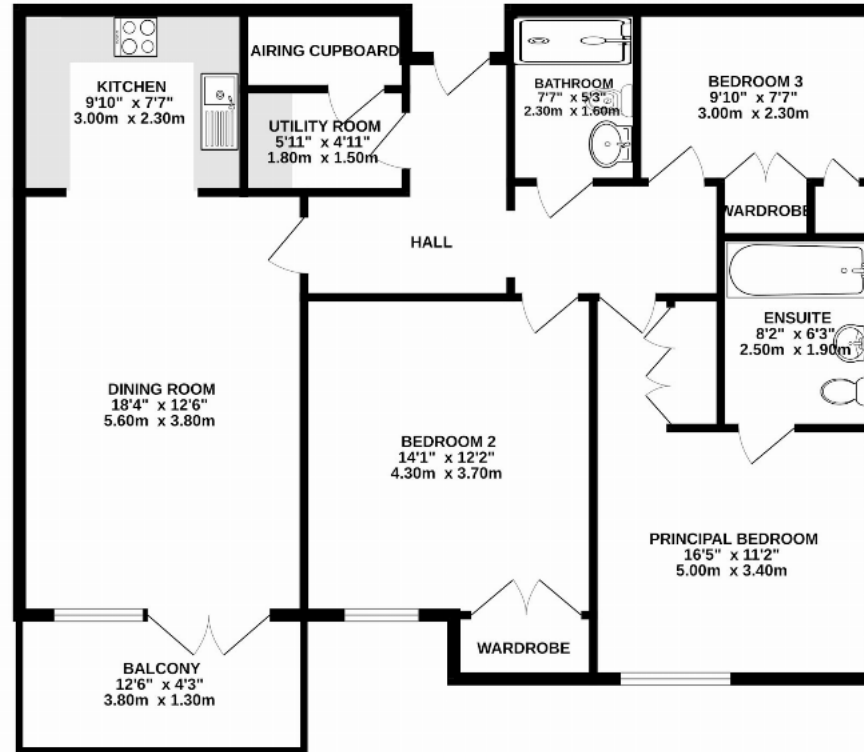


Buyers Information

In compliance with the UK's Anti Money Laundering (AML) regulations, we are required to confirm the identity of all prospective buyers at the point of an offer being accepted and use a third party, Identity Verification System to do so. There is a nominal charge of £48 (per person) including VAT for this service. For more information, please refer to the terms and conditions section of our website.







TOTAL FLOOR AREA : 914 sq.ft. (84.9 sq.m.) approx.

This floor plan is for illustrative purposes only. The measurement and position of each element is approximate and must be viewed as such

Important Information These particulars do not constitute an offer or contract in whole or part. The statements contained herein are made without responsibility on the part of Ashtons or the vendors and they cannot be relied upon as representatives of fact. In respect of floor plans, these are for illustrative purposes only. The measurement and position of each element is approximate and must be viewed as such. Intending purchasers should therefore satisfy themselves by inspection or otherwise as to their correctness. The vendors do not make or give, and neither Ashtons nor any person in their employment has any authority to make or give, any representation or warranty whatsoever in relation to this property. We offer a wide range of services through third party providers including solicitors, surveyors, removal firms, mortgage providers and EPC suppliers. We receive additional payments for administering suppliers quoting software and making referrals. You are not under any obligations to use these services and it is your discretion whether you choose to deal with these parties or your own preferred supplier. You should be aware the average payment we received in 2024 equated to £29.76 per referral.