



4 Bedrooms



3 Bathrooms



2 Receptions

Freehold

 **ashtons**
for life's great moves

Paddock Close, Pepperstock, Luton, LU1 4LQ
Guide price of £635,000

Plot 4 Paddock Close: four bedroom home in a gated development, 1564 sq ft, with allocated parking for two cars.

Description

Welcome to Paddock Close, a private development of six 3 & 4 bedroom houses and bungalows with fantastic countryside views. These homes blend country living with city life reachable in under 27 minutes. Plot 4 is a four-bedroom home with 1564 sq ft featuring a large kitchen/dining room with integrated appliances and a separate living room. Two bedrooms and two bathrooms are on the ground floor, with two additional bedrooms and a bathroom on the first floor. Each layout is thoughtfully designed, offering two allocated parking spaces with electric charging points. The property includes underfloor heating and flooring throughout. Viewings by prior appointment - call now for more information or to book a viewing! NB: External image is CGI, internal images are of various plots and show typical specification.

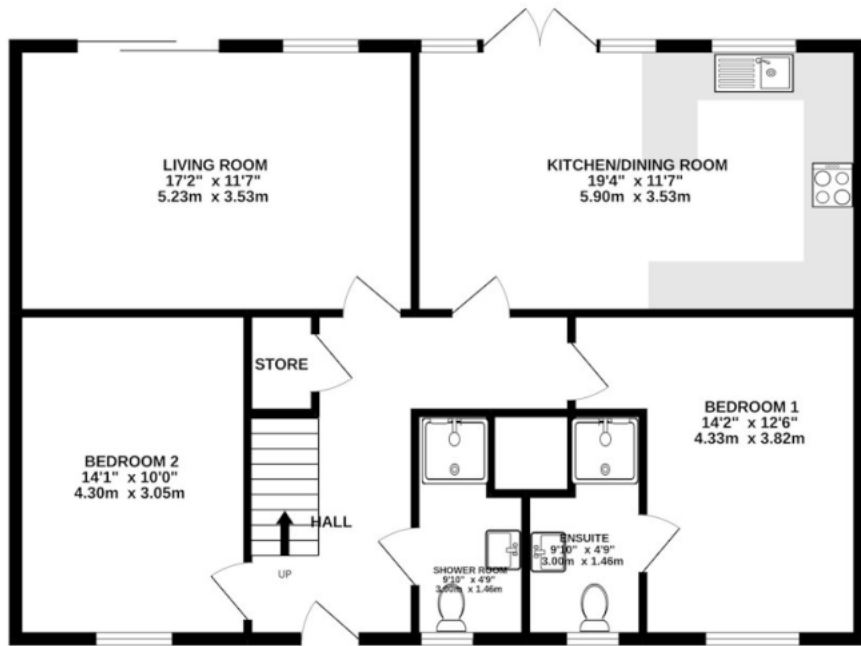


Buyers Information: - In compliance with the UK's Anti Money Laundering (AML) regulations, we are required to confirm the identity of all prospective buyers at the point of an offer being accepted and use a third party, Identity Verification System to do so. There is a nominal charge of £48 (per person) including VAT for this service. For more information, please refer to the terms and conditions section of our website.

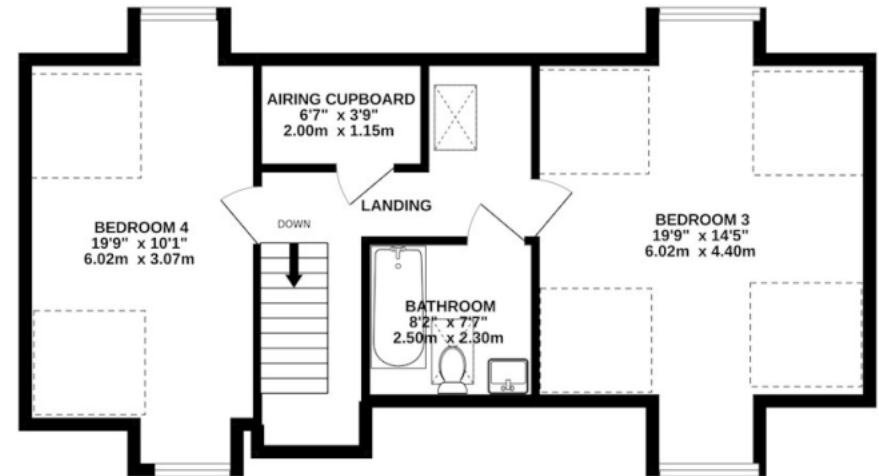




GROUND FLOOR
954 sq.ft. (88.6 sq.m.) approx.



1ST FLOOR
611 sq.ft. (56.7 sq.m.) approx.



TOTAL FLOOR AREA : 1564sq.ft. (145.3 sq.m.) approx.

Whilst every attempt has been made to ensure the accuracy of the floorplan contained here, measurements of doors, windows, rooms and any other items are approximate and no responsibility is taken for any error, omission or mis-statement. This plan is for illustrative purposes only and should be used as such by any prospective purchaser. The services, systems and appliances shown have not been tested and no guarantee as to their operability or efficiency can be given.
Made with Metropix ©2022

Important Information These particulars do not constitute an offer or contract in whole or part. The statements contained herein are made without responsibility on the part of Ashtons or the vendors and they cannot be relied upon as representatives of fact. In respect of floor plans, these are for illustrative purposes only. The measurement and position of each element is approximate and must be viewed as such. Intending purchasers should therefore satisfy themselves by inspection or otherwise as to their correctness. The vendors do not make or give, and neither Ashtons nor any person in their employment has any authority to make or give, any representation or warranty whatsoever in relation to this property. We offer a wide range of services through third party providers including solicitors, surveyors, removal firms, mortgage providers and EPC suppliers. We receive additional payments for administering suppliers quoting software and making referrals. You are not under any obligations to use these services and it is your discretion whether you choose to deal with these parties or your own preferred supplier. You should be aware the average payment we received in 2024 equated to £29.76 per referral.