 3 Bedrooms

 2 Bathrooms

 2 Receptions

Freehold

 **ashtons**
for life's great moves

Sandy Road, Potton, SG19 2QQ
Guide price of £515,000

Plot 6 The Barns is a three bedroom end-of-terrace barn-style home with 1300 sq ft of flexible accommodation, car port and two parking spaces

Description

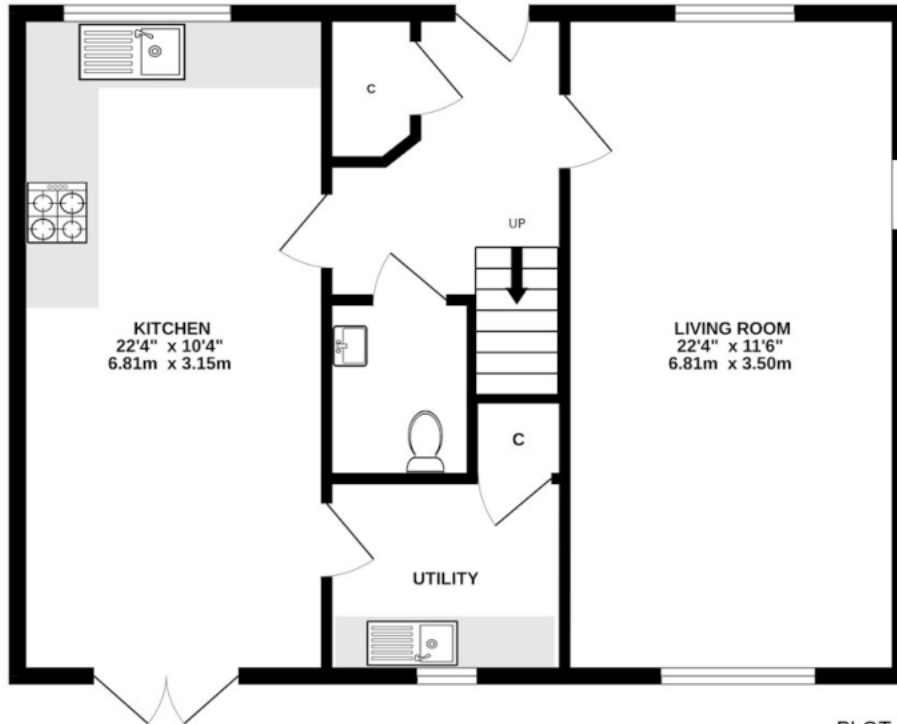
SELLING FAST! The Barns is a small private development of exquisite 3, 4, and 5-bedroom residences blending modern conveniences with the charm of country-style living. Each home is meticulously designed for a sophisticated lifestyle, featuring contemporary interiors and high-quality finishes. Experience rural tranquillity with urban access. PLOT 6 is a three-bedroom end-of-terrace barn-style home with 1300 sq ft, offering a spacious kitchen, separate utility, and dual aspect living room. The first floor includes three bedrooms, a master with ensuite, and a separate family bathroom. Generous proportions, light-filled interiors, and curated finishes blend style with practicality. Stunning open-plan kitchen and dining spaces offer perfect entertainment settings, while elegant living areas and spacious bedrooms provide comfort and retreat. Call us now for more details or to book a viewing! NB: External images are CGI, internal images are of previous development and show typical specification.



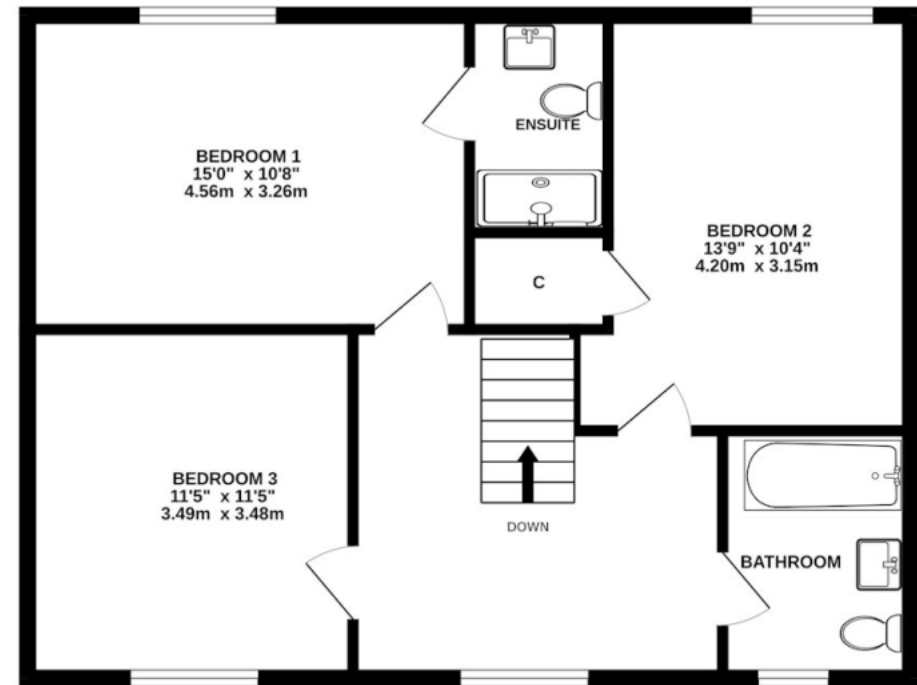
In compliance with the UK's Anti Money Laundering (AML) regulations, we are required to confirm the identity of all prospective buyers at the point of an offer being accepted and use a third party, Identity Verification System to do so. There is a nominal charge of £48 (per person) including VAT for this service. For more information, please refer to the terms and conditions section of our website.



GROUND FLOOR



1ST FLOOR



PLOT 6 - STABLES

TOTAL FLOOR AREA : 1300sq.ft. (120.8 sq.m.) approx.

Whilst every attempt has been made to ensure the accuracy of the floorplan contained here, measurements of doors, windows, rooms and any other items are approximate and no responsibility is taken for any error, omission or mis-statement. This plan is for illustrative purposes only and should be used as such by any prospective purchaser. The services, systems and appliances shown have not been tested and no guarantee as to their operability or efficiency can be given.
Made with Metropix ©2026

Important Information These particulars do not constitute an offer or contract in whole or part. The statements contained herein are made without responsibility on the part of Ashtons or the vendors and they cannot be relied upon as representatives of fact. In respect of floor plans, these are for illustrative purposes only. The measurement and position of each element is approximate and must be viewed as such. Intending purchasers should therefore satisfy themselves by inspection or otherwise as to their correctness. The vendors do not make or give, and neither Ashtons nor any person in their employment has any authority to make or give, any representation or warranty whatsoever in relation to this property. We offer a wide range of services through third party providers including solicitors, surveyors, removal firms, mortgage providers and EPC suppliers. We receive additional payments for administering suppliers quoting software and making referrals. You are not under any obligations to use these services and it is your discretion whether you choose to deal with these parties or your own preferred supplier. You should be aware the average payment we received in 2024 equated to £29.76 per referral.