



4 Bedrooms



3 Bathrooms



3 Receptions

Freehold



Ridgeway Close, Dagnall, HP4 1QR

Guide price of £1,425,000

COMING SOON - OFF PLAN RESERVATIONS AVAILABLE - A boutique collection of distinguished country homes in the heart of the Chilterns

Description

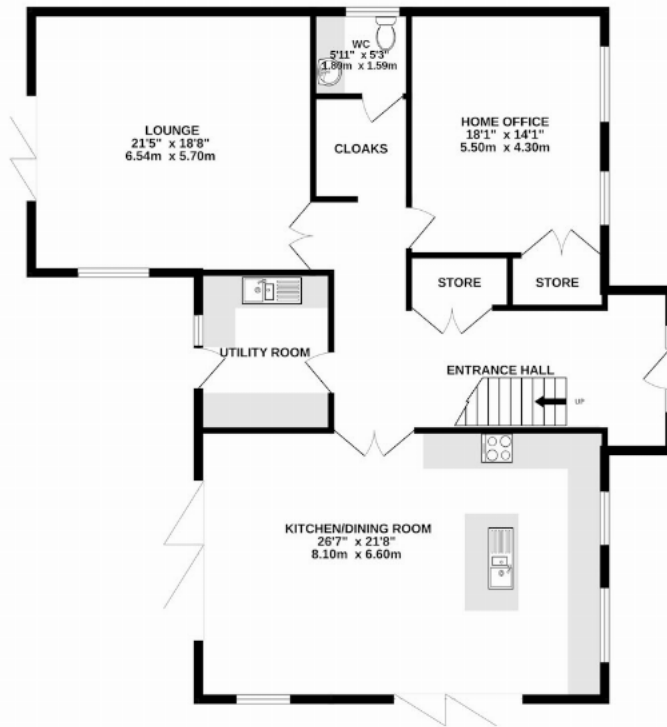
Nestled within the former grounds of Mile Barn Farm, Ridgeway Close is an enclave of nine detached luxury homes, designed to complement their spectacular setting. Surrounded by rolling countryside with views of the Chiltern Hills, this is where timeless elegance meets modern comfort. Plot 7 is a four-bedroom detached home with nearly 3500 sq ft of accommodation, three reception rooms, driveway, and double carport. Each home is crafted, blending classic architectural detail with contemporary interiors and meticulous attention to detail. With spacious plots, landscaped surroundings, and a specification that sets a new benchmark for quality, Ridgeway Close represents refined country living. Set at the end of a private close, the development enjoys seclusion and tranquillity, while being connected to Berkhamsted, Hemel Hempstead, and Tring. Residents can enjoy nature's serenity without sacrificing convenience. OFF PLAN RESERVATION BEING TAKEN - PLEASE CALL TO FIND OUT MORE!

Buyers Information: - In compliance with the UK's Anti Money Laundering (AML) regulations, we are required to confirm the identity of all prospective buyers at the point of an offer being accepted and use a third party, Identity Verification System to do so. There is a nominal charge of £48 (per person) including VAT for this service. For more information, please refer to the terms and conditions section of our website.

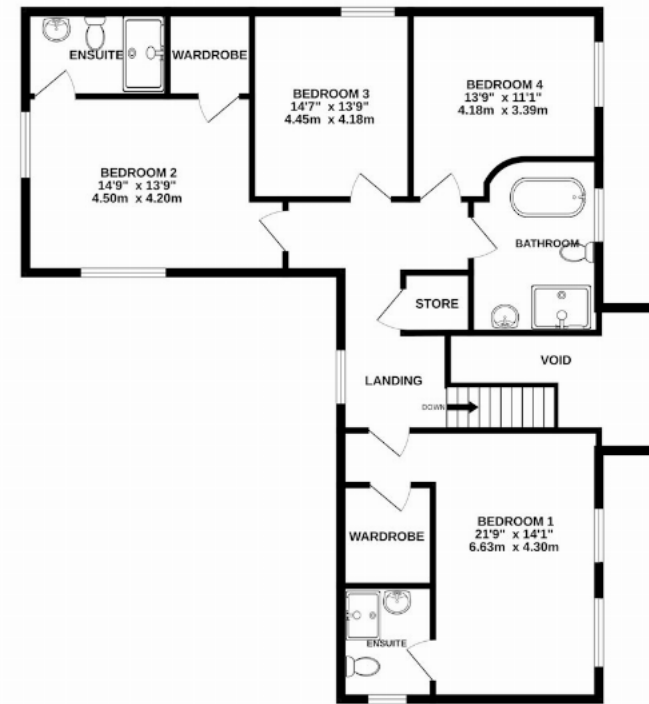




GROUND FLOOR



1ST FLOOR



PLOT 7

TOTAL FLOOR AREA : 3454sq.ft. (320.9 sq.m.) approx.

Whilst every attempt has been made to ensure the accuracy of the floorplan contained here, measurements of doors, windows, rooms and any other items are approximate and no responsibility is taken for any error, omission or mis-statement. This plan is for illustrative purposes only and should be used as such by any prospective purchaser. The services, systems and appliances shown have not been tested and no guarantee as to their operability or efficiency can be given.
Made with Metropix ©2025

Important Information These particulars do not constitute an offer or contract in whole or part. The statements contained herein are made without responsibility on the part of Ashtons or the vendors and they cannot be relied upon as representatives of fact. In respect of floor plans, these are for illustrative purposes only. The measurement and position of each element is approximate and must be viewed as such. Intending purchasers should therefore satisfy themselves by inspection or otherwise as to their correctness. The vendors do not make or give, and neither Ashtons nor any person in their employment has any authority to make or give, any representation or warranty whatsoever in relation to this property. We offer a wide range of services through third party providers including solicitors, surveyors, removal firms, mortgage providers and EPC suppliers. We receive additional payments for administering suppliers quoting software and making referrals. You are not under any obligations to use these services and it is your discretion whether you choose to deal with these parties or your own preferred supplier. You should be aware the average payment we received in 2024 equated to £29.76 per referral.