



3 Bedrooms



2 Bathrooms



1 Reception

Freehold

LAST REMAINING! Plot 2: 3-bed terraced home with private garden and parking. One of just three in this boutique collection.

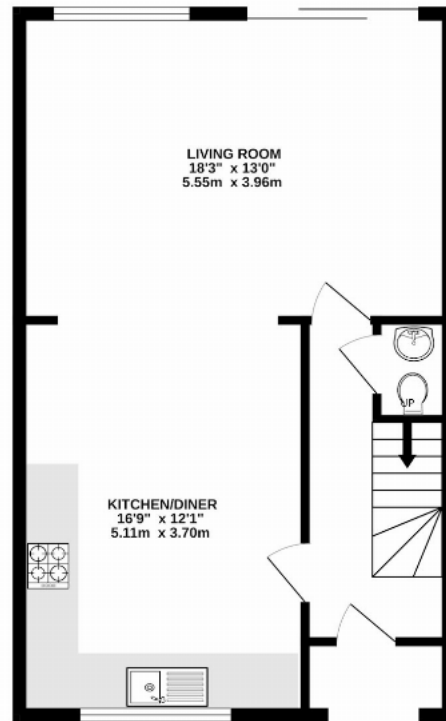
Description

Don't Miss Out! Only one home remaining! Discover a rare opportunity in London Colney - a boutique collection of three stunning 2 & 3-bedroom homes on tranquil White Horse Drive. Plot 2, a 3-bedroom terraced home, offers 1060 sq ft, a private garden, and parking. Designed with modern sustainability, these homes boast luxury German Schüller kitchens, Siemens & Bosch appliances, Invictus flooring, Villeroy & Boch sanitaryware, and air source heat pumps. South East-facing landscaped gardens and two parking spaces per home complete the offering. Completions expected Late September/Early October 25. Not part of a large estate, these homes are ideal for young professionals, families, or downsizers seeking quality living. A unique find with only three available, don't miss this chance to elevate your lifestyle. (NB: Some images may be of Plot 3)

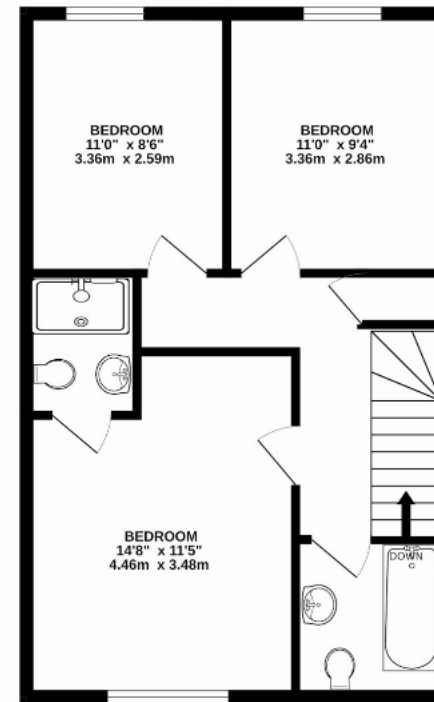








GROUND FLOOR
542 sq.ft. (50.4 sq.m.) approx.



1ST FLOOR
518 sq.ft. (48.1 sq.m.) approx.

TOTAL FLOOR AREA : 1060 sq.ft. (98.5 sq.m.) approx.

This floor plan is for illustrative purposes only. The measurement and position of each element is approximate and must be viewed as such

Important Information These particulars do not constitute an offer or contract in whole or part. The statements contained herein are made without responsibility on the part of Ashtons or the vendors and they cannot be relied upon as representatives of fact. In respect of floor plans, these are for illustrative purposes only. The measurement and position of each element is approximate and must be viewed as such. Intending purchasers should therefore satisfy themselves by inspection or otherwise as to their correctness. The vendors do not make or give, and neither Ashtons nor any person in their employment has any authority to make or give, any representation or warranty whatsoever in relation to this property. We offer a wide range of services through third party providers including solicitors, surveyors, removal firms, mortgage providers and EPC suppliers. We receive additional payments for administering suppliers quoting software and making referrals. You are not under any obligations to use these services and it is your discretion whether you choose to deal with these parties or your own preferred supplier. You should be aware the average payment we received in 2024 equated to £29.76 per referral.