

 2 Bedrooms

 1 Bathroom

 1 Reception

 EPC Band B

Leasehold



Plot 1 Vista House: 2-bed 2nd floor apartment, 659 sq ft, private balcony. ** SHOW HOME AVAILABLE TO VIEW **

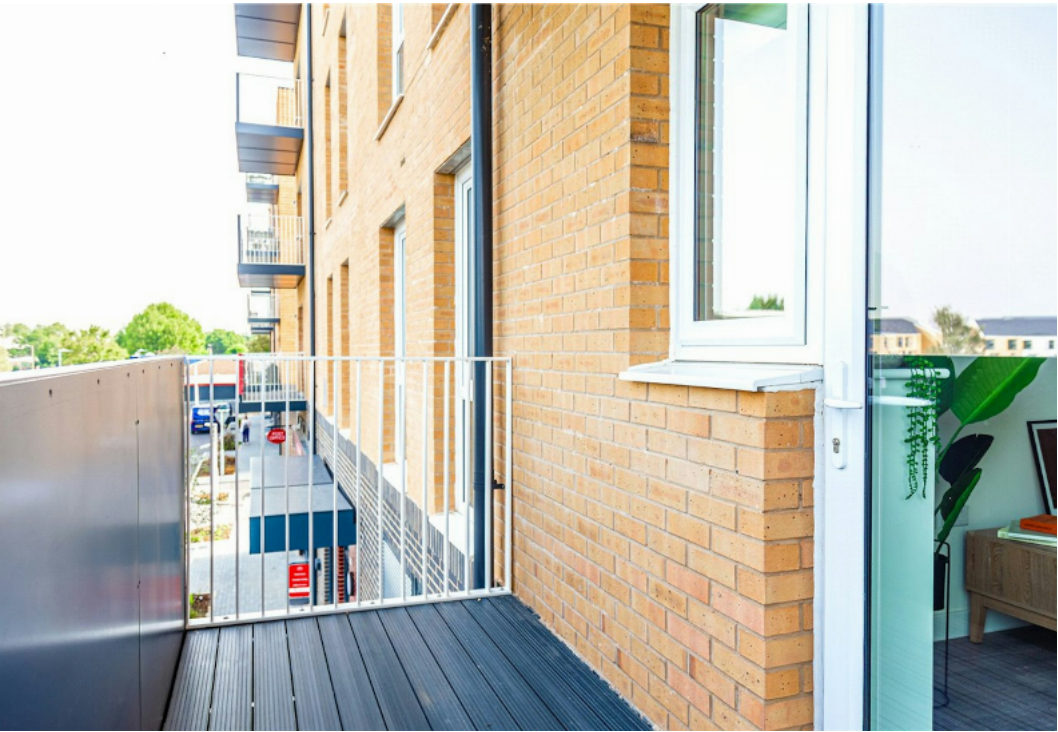
Description

This next phase of 1 & 2 bedroom apartments is part of the popular Hatfield Rise development, featuring 24 one and two-bedroom units with balconies and allocated parking. Plot 1 Vista House (D2-01-01) is a two-bedroom second-floor apartment of 659 sq ft with a private balcony. ** SHOW HOME AVAILABLE TO VIEW ** Hatfield Rise is a key part of Hatfield's ambitious regeneration plan, providing contemporary homes for those who love the community, location, and unique amenities. Built by a leading UK five-star builder, this new community offers stylish apartments, elegant townhouses, and amenities like retail units, a doctor's surgery, and a play area. A new green space is central, with landscaped gardens and tree-lined streets. Ideally located just south of the town centre, minutes from the Galleria Shopping Centre, the University of Hertfordshire, and Hatfield Business Park, Hatfield Rise is where you can stay connected and call home. Photos shown are of the Show Apartment.

Buyers Information: - In compliance with the UK's Anti Money Laundering (AML) regulations, we are required to confirm the identity of all prospective buyers at the point of an offer being accepted and use a third party, Identity Verification System to do so. There is a nominal charge of £48 (per person) including VAT for this service. For more information, please refer to the terms and conditions section of our website.







PROSPECT HOUSE
APARTMENT TYPE 1
2 bedroom apartment
61.2sqm | 659sqft



Dimensions

Living/Dining/Kitchen 7472mm x 2850mm 24'6" x 9'4"
Bedroom 1 6697mm x 2750mm 18'8" x 9'
Bedroom 2 4547mm x 2200mm 14'11" x 7'2"

Plot numbers

Floor

D2-01-01	01
D2-02-01	02
D2-03-01	03
D2-04-01	04

Customers should note the computer generated image shown is an illustration of Prospect House. External finishes, landscaping and roofing of final building may vary. Dimensions stated are maximum room measurements and within 50mm (2") but should not be used as a basis for furnishings, furniture or appliance spaces etc. Dimensions for such purposes must be verified against actual site measurements. Please check individual plot details with our sales team. ST denotes Store, L denotes Lift.

Important Information These particulars do not constitute an offer or contract in whole or part. The statements contained herein are made without responsibility on the part of Ashtons or the vendors and they cannot be relied upon as representatives of fact. In respect of floor plans, these are for illustrative purposes only. The measurement and position of each element is approximate and must be viewed as such. Intending purchasers should therefore satisfy themselves by inspection or otherwise as to their correctness. The vendors do not make or give, and neither Ashtons nor any person in their employment has any authority to make or give, any representation or warranty whatsoever in relation to this property. We offer a wide range of services through third party providers including solicitors, surveyors, removal firms, mortgage providers and EPC suppliers. We receive additional payments for administering suppliers quoting software and making referrals. You are not under any obligations to use these services and it is your discretion whether you choose to deal with these parties or your own preferred supplier. You should be aware the average payment we received in 2024 equated to £29.76 per referral.