

 1 Bedroom

 1 Bathroom

 1 Reception

 EPC Band B

Leasehold



Plot B2.01.03: 1-bed first-floor apartment, 567 sq ft, private balcony. SHOW HOME VIEWING by appointment. READY TO MOVE IN! Save £2,500 on energy bills.

Description

* SHOW HOME AVAILABLE TO VIEW BY APPOINTMENT * Vista is an exciting new development in the heart of Hatfield, near the town centre. Plot B2.01.03 features a one-bedroom first-floor apartment with 567 sq ft and a private balcony. **READY TO MOVE IN TO! BUY NEW AND SAVE £2,500 ON ENERGY BILLS** Built by Lovell, one of the UK's top house builders, these modern one and two-bedroom apartments are centred around a landscaped boulevard courtyard with nearby amenities. All homes emphasise open-plan living, with stylish kitchens, work-from-home space and private balconies. As a new build, they incorporate energy-efficient features, beneficial for both the planet and your pocket.

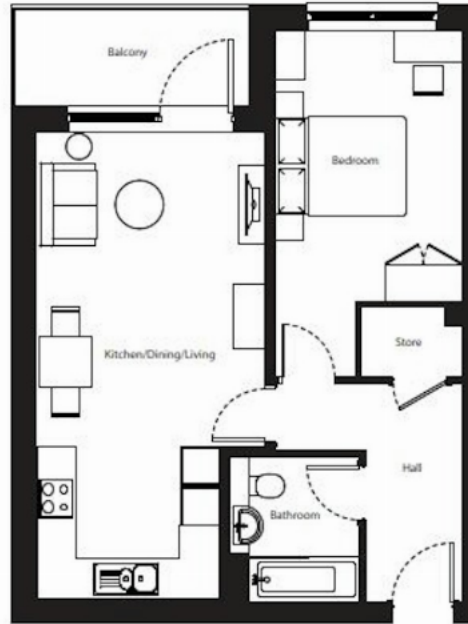


Buyers Information: - In compliance with the UK's Anti Money Laundering (AML) regulations, we are required to confirm the identity of all prospective buyers at the point of an offer being accepted and use a third party, Identity Verification System to do so. There is a nominal charge of £48 (per person) including VAT for this service. For more information, please refer to the terms and conditions section of our website.



NEWTOWN HOUSE APARTMENT TYPE 2

1 bedroom apartment
52.7sqm | 567sqft



Dimensions

Living/Dining/Kitchen 7236mm x 3553mm | 23'9" x 11'8"
Bedroom 1 4199mm x 2894mm | 13'9" x 9'6"

Plot numbers

B02-01-03
B02-02-03
B02-03-03

Floor

01
02
03

Floors 1-3



Important Information These particulars do not constitute an offer or contract in whole or part. The statements contained herein are made without responsibility on the part of Ashtons or the vendors and they cannot be relied upon as representatives of fact. In respect of floor plans, these are for illustrative purposes only. The measurement and position of each element is approximate and must be viewed as such. Intending purchasers should therefore satisfy themselves by inspection or otherwise as to their correctness. The vendors do not make or give, and neither Ashtons nor any person in their employment has any authority to make or give, any representation or warranty whatsoever in relation to this property. We offer a wide range of services through third party providers including solicitors, surveyors, removal firms, mortgage providers and EPC suppliers. We receive additional payments for administering suppliers quoting software and making referrals. You are not under any obligations to use these services and it is your discretion whether you choose to deal with these parties or your own preferred supplier. You should be aware the average payment we received in 2024 equated to £29.76 per referral.