 4 bedrooms

 1 bathroom

 2 receptions

 EPC Band D

Freehold

Council Tax Band:  
F £3,220.45 (24/25)

Local Authority:  
St Albans District Council



Spacious 4-bed semi-detached home in a prized central setting, close to excellent schools.

### Description

This charming character home has been lovingly maintained by our clients and offers a perfect balance of space for a growing family. On the ground floor, you'll find an entrance hall leading to the first floor, a front lounge overlooking a picturesque street, and a spacious kitchen-family room at the rear, serving as the home's focal point. The kitchen connects to a rear lobby with a WC and an extended playroom. The first floor features four bedrooms serviced by a family bathroom, with a pull-down ladder to a useful loft room. Externally, there's generous off-road parking at the front with access to an integral garage. The rear boasts a neatly landscaped garden ideal for outdoor dining and a private lawn. A superb home for any family stage!

### Location

Carisbrooke Road, a serene crescent in Harpenden, is midway between Sir John Lawes and Crabtree schools. Just a 12-min stroll to the rail service, near the town centre and Lea-valley nature reserve. A blend of early 1900's houses on private plots.

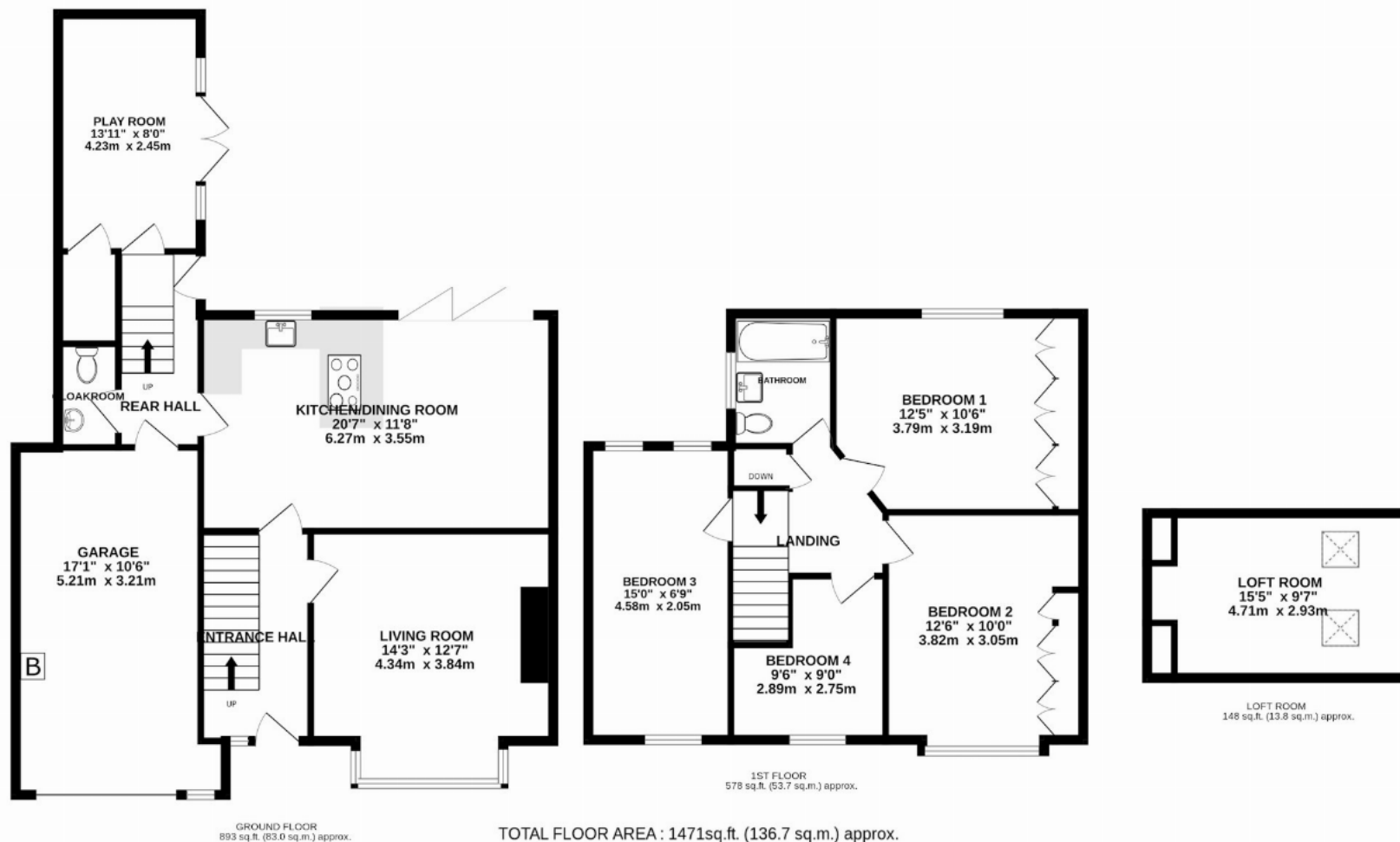
#### Buyers Information

In compliance with the UK's Anti Money Laundering (AML) regulations, we are required to confirm the identity of all prospective buyers at the point of an offer being accepted and use a third party, Identity Verification System to do so. There is a nominal charge of £48 (per person) including VAT for this service. For more information, please refer to the terms and conditions section of our website.









This floorplan is for illustration purposes only. The measurements and position of each element are approximate and must be viewed as such.

**Important Information** These particulars do not constitute an offer or contract in whole or part. The statements contained herein are made without responsibility on the part of Ashtons or the vendors and they cannot be relied upon as representatives of fact. In respect of floor plans, these are for illustrative purposes only. The measurement and position of each element is approximate and must be viewed as such. Intending purchasers should therefore satisfy themselves by inspection or otherwise as to their correctness. The vendors do not make or give, and neither Ashtons nor any person in their employment has any authority to make or give, any representation or warranty whatsoever in relation to this property. We offer a wide range of services through third party providers including solicitors, surveyors, removal firms, mortgage providers and EPC suppliers. We receive additional payments for administering suppliers quoting software and making referrals. You are not under any obligations to use these services and it is your discretion whether you choose to deal with these parties or your own preferred supplier. You should be aware the average payment we received in 2024 equated to £29.76 per referral.