
 5 bedrooms

 3 bathrooms

 3 receptions

 EPC Band C

Freehold

Council Tax Band:
G £3,739.21 (24/25)

Local Authority:
St Albans District Council



Stunning 5-bed villa-style detached home with versatile living across 3 floors. Impeccably presented in a sought-after area with excellent schools, ideal for families.

Description

Built in 2003 on a peaceful private road, this impressive five-bedroom detached home offers generous space, finished to an exceptional standard. Spanning three floors, the layout includes an inviting entrance hall, convenient WC, reading room, front-facing dining room, and a spacious living room opening onto the garden. The bright, modern kitchen/diner is perfect for family meals, with fully integrated Siemens appliances and a boiling water tap, offering access to the integral garage. The first floor features four well-proportioned bedrooms, one with an ensuite shower room, while a family bathroom serves the remaining bedrooms. The second floor is dedicated to a stunning principal suite with a luxurious bathroom. With off-road parking at the front and a beautifully maintained rear garden, this is a perfect family home offering both comfort and style.

Location

Hilltop Walk offers beautiful homes in a peaceful setting near top schools and countryside. With Harpenden's centre and St. Pancras links just 0.8 miles away, and Southdown's shops and pubs nearby, it's an exceptional location for any stage of life.

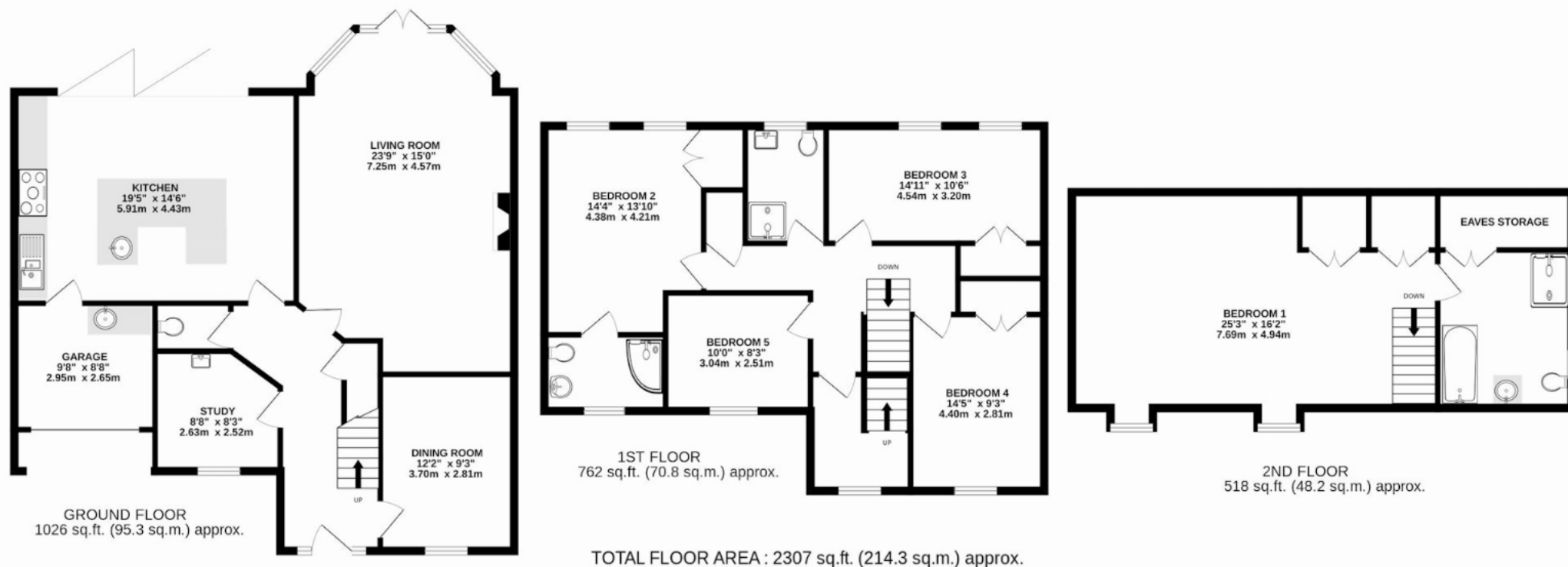
Buyers Information

In compliance with the UK's Anti Money Laundering (AML) regulations, we are required to confirm the identity of all prospective buyers at the point of an offer being accepted and use a third party, Identity Verification System to do so. There is a nominal charge of £48 (per person) including VAT for this service. For more information, please refer to the terms and conditions section of our website.









This floorplan is for illustration purposes only. The measurements and position of each element are approximate and must be viewed as such.

Important Information These particulars do not constitute an offer or contract in whole or part. The statements contained herein are made without responsibility on the part of Ashtons or the vendors and they cannot be relied upon as representatives of fact. In respect of floor plans, these are for illustrative purposes only. The measurement and position of each element is approximate and must be viewed as such. Intending purchasers should therefore satisfy themselves by inspection or otherwise as to their correctness. The vendors do not make or give, and neither Ashtons nor any person in their employment has any authority to make or give, any representation or warranty whatsoever in relation to this property. We offer a wide range of services through third party providers including solicitors, surveyors, removal firms, mortgage providers and EPC suppliers. We receive additional payments for administering suppliers quoting software and making referrals. You are not under any obligations to use these services and it is your discretion whether you choose to deal with these parties or your own preferred supplier. You should be aware the average payment we received in 2024 equated to £29.76 per referral.