


 2 Bedrooms

 1 Bathroom

 1 Reception

 EPC Band E

Council Tax Band:
D £0.00 ()



Pretty Victorian cottage on a popular road in Southdown village's heart.

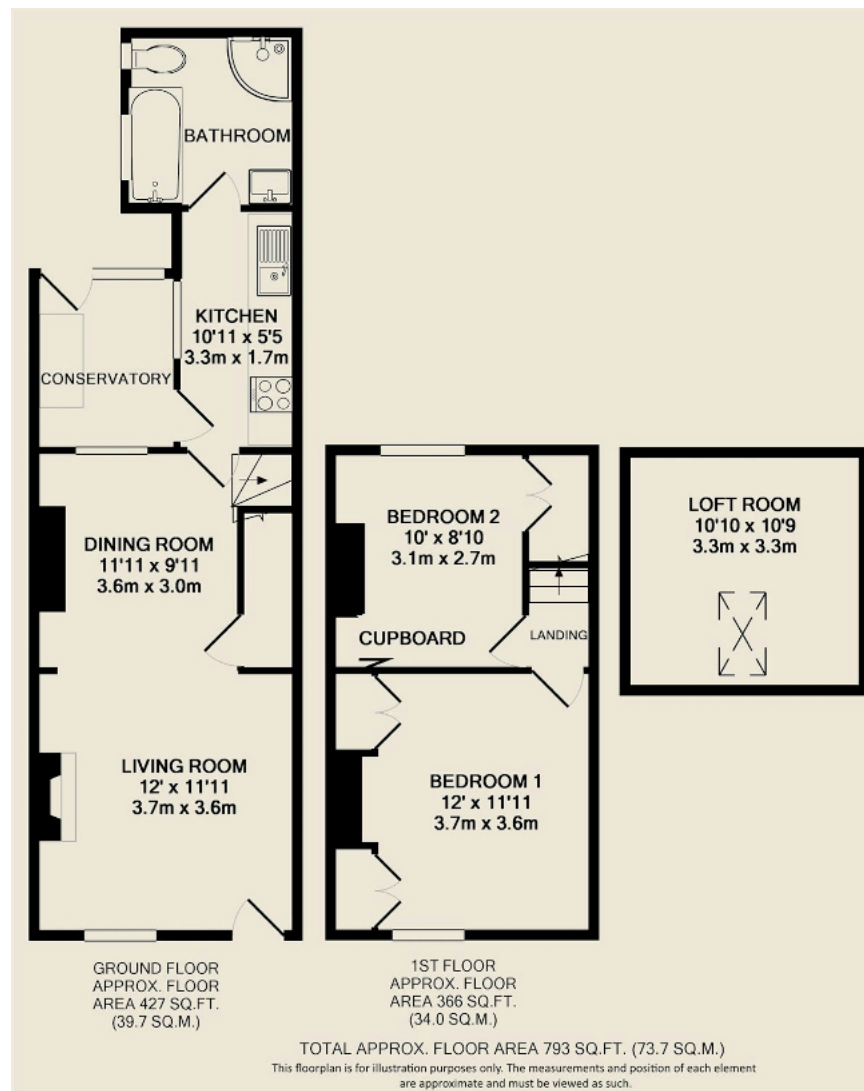
Description

This early Victorian cottage has been thoughtfully refurbished, blending period charm with modern comfort. A garden gate leads to an attractive front garden and into a spacious reception room with wooden flooring and a Victorian-style fireplace. At the rear, a sleek kitchen is equipped with a hob, electric oven, fridge/freezer, and dishwasher. A separate utility room with a washing machine and tumble dryer provides access to the rear garden. The ground floor also hosts a modern bathroom with a bath and separate shower. Upstairs, the first floor is fully carpeted. The master bedroom includes fitted wardrobes, and the rear double bedroom has a loft ladder to a boarded loft space with power and a window, ideal for storage. The property features a charming patio surrounded by vibrant flowers leading to a mature lawn. On-street parking. Six-month tenancy available.









Important Information These particulars do not constitute an offer or contract in whole or part. The statements contained herein are made without responsibility on the part of Ashtons or the vendors and they cannot be relied upon as representatives of fact. In respect of floor plans, these are for illustrative purposes only. The measurement and position of each element is approximate and must be viewed as such. Intending purchasers should therefore satisfy themselves by inspection or otherwise as to their correctness. The vendors do not make or give, and neither Ashtons nor any person in their employment has any authority to make or give, any representation or warranty whatsoever in relation to this property. We offer a wide range of services through third party providers including solicitors, surveyors, removal firms, mortgage providers and EPC suppliers. We receive additional payments for administering suppliers quoting software and making referrals. You are not under any obligations to use these services and it is your discretion whether you choose to deal with these parties or your own preferred supplier. You should be aware the average payment we received in 2024 equated to £29.76 per referral.