



3 bedrooms



2 bathrooms



2 receptions



EPC Band D

Council Tax Band:  
D £0.00 ()





A simply stunning 3 bedroom period property in a much sought after location close to the Common.

### Description

This well-presented Victorian home offers a blend of period character and modern comfort. The front reception room features original timber beams, while a rear extension provides a spacious open-plan living and dining area with vaulted ceilings and an abundance of natural light from Velux skylights. Bifold doors open onto a south-facing patio and a private garden with lawn. The kitchen is designed to complement the home's character, featuring ample storage, a breakfast bar, integrated dishwasher, washer/dryer, electric oven, and hob. A ground floor WC is also included. Upstairs, there are three bedrooms with fitted wardrobes. The main bedroom includes an en-suite, and there is a separate family bathroom. Additional features include an integrated garage for storage, and on-street parking is available.

### Location

Cravells Road, near Harpenden's East Common, offers charming Victorian houses and stunning walks. Close to Southdown facilities, town centre, and mainline station. Access to London in under 30 mins.



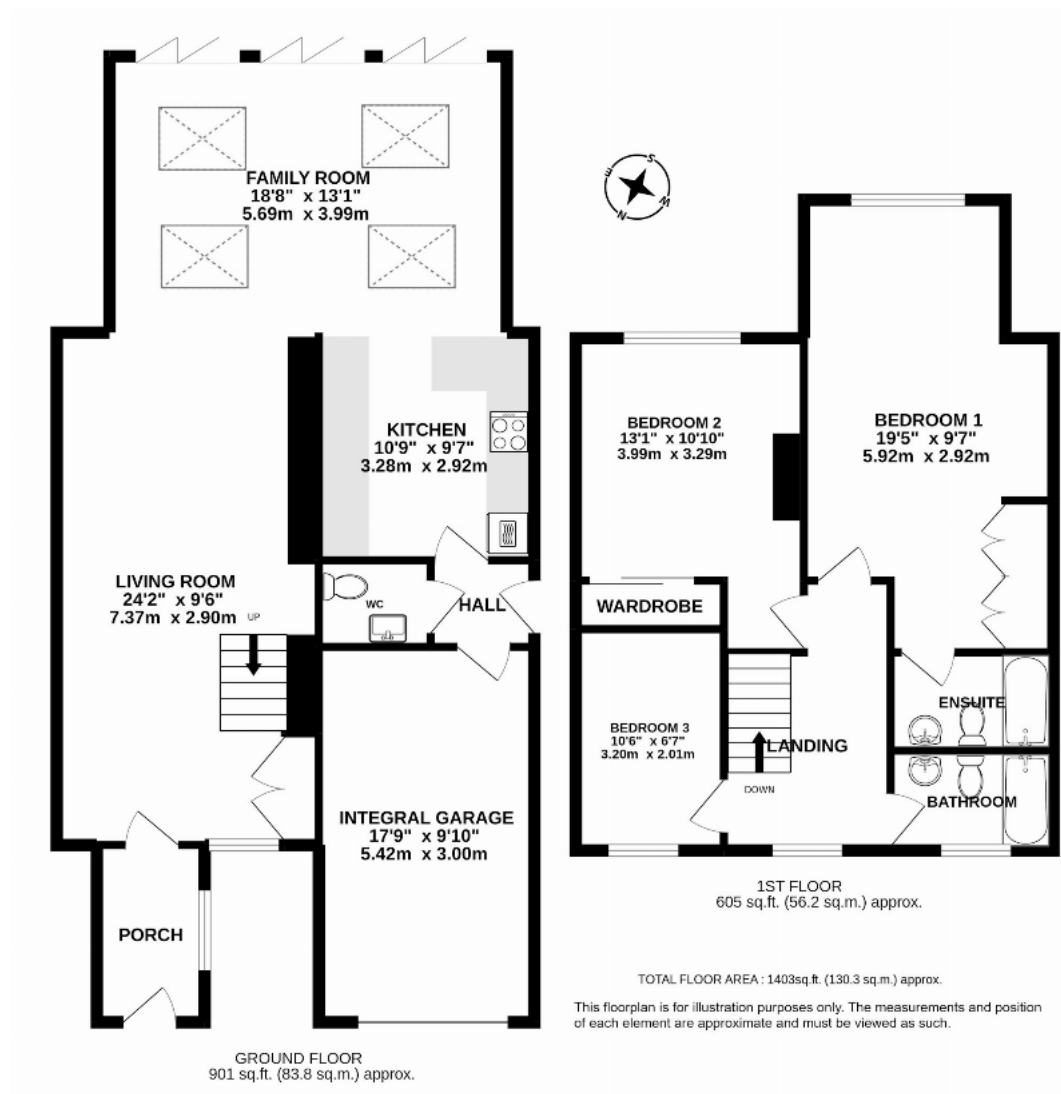












**Important Information** These particulars do not constitute an offer or contract in whole or part. The statements contained herein are made without responsibility on the part of Ashtons or the vendors and they cannot be relied upon as representatives of fact. In respect of floor plans, these are for illustrative purposes only. The measurement and position of each element is approximate and must be viewed as such. Intending purchasers should therefore satisfy themselves by inspection or otherwise as to their correctness. The vendors do not make or give, and neither Ashtons nor any person in their employment has any authority to make or give, any representation or warranty whatsoever in relation to this property. We offer a wide range of services through third party providers including solicitors, surveyors, removal firms, mortgage providers and EPC suppliers. We receive additional payments for administering suppliers quoting software and making referrals. You are not under any obligations to use these services and it is your discretion whether you choose to deal with these parties or your own preferred supplier. You should be aware the average payment we received in 2024 equated to £29.76 per referral.