



1 Bedroom



1 Bathroom



1 Reception



EPC Band C

Council Tax Band:

C £0.00 ()

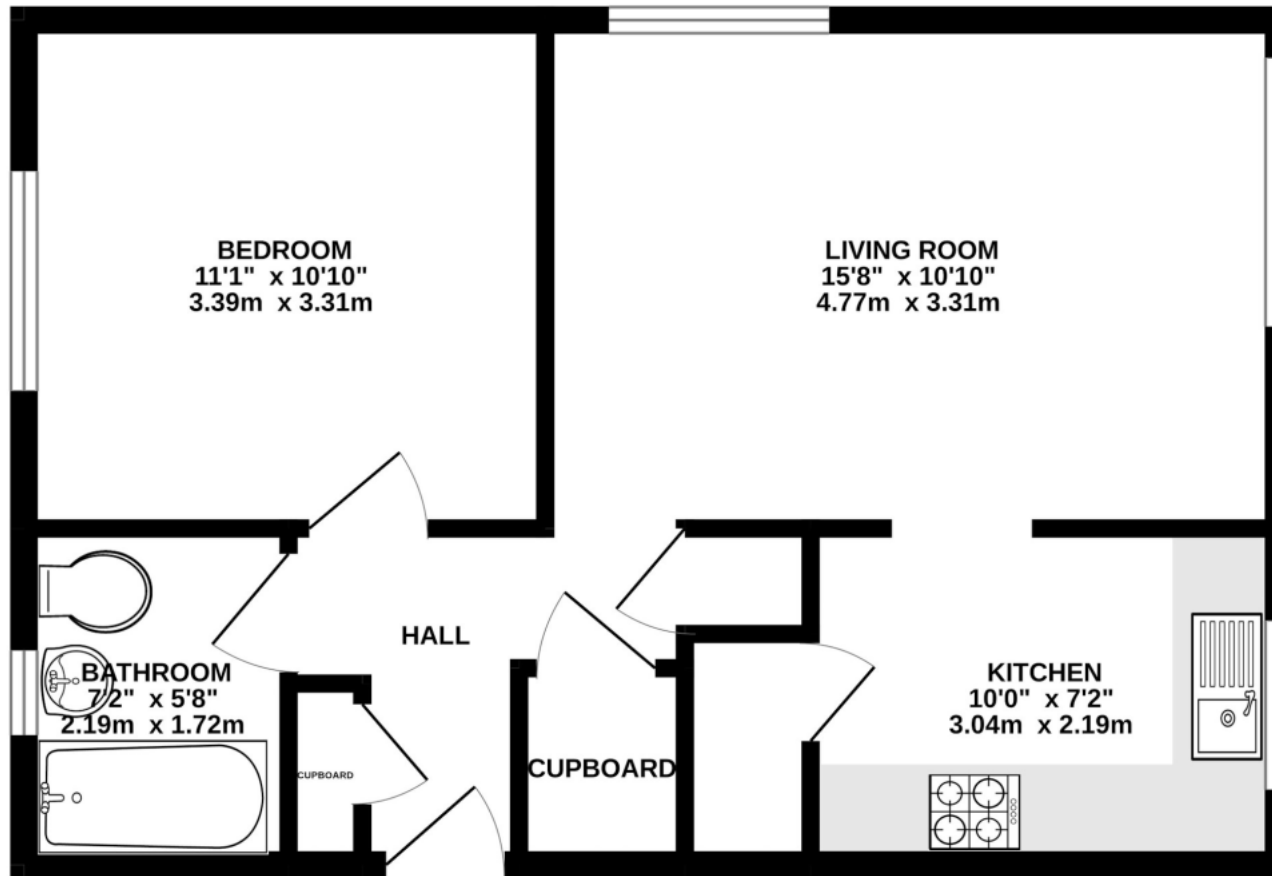
A newly refurbished one bedroom apartment situated in a popular location within walking distance of the town centre with no onward chain.

### Description

Set on the sought-after Hillside Road in Harpenden, this newly renovated one-bedroom apartment offers well-presented accommodation throughout. The property is thoughtfully arranged around a central hallway, providing access to all principal rooms and useful built-in storage. There is a bright and spacious lounge, alongside a separate newly fitted kitchen featuring integrated appliances and granite worktops. The well-proportioned double bedroom is carpeted and overlooks the neatly maintained communal gardens. The newly fitted, fully tiled bathroom has been finished to a high specification and includes a bath with overhead shower. The apartment benefits from excellent storage throughout, with four convenient internal cupboards, in addition to a private external storage cupboard, ideal for bicycle storage.







TOTAL FLOOR AREA : 483 sq.ft. (44.9 sq.m.) approx.

This floorplan is for illustration purposes only, the measurements and position of each element are approximate and must be viewed as such

**Important Information** These particulars do not constitute an offer or contract in whole or part. The statements contained herein are made without responsibility on the part of Ashtons or the vendors and they cannot be relied upon as representatives of fact. In respect of floor plans, these are for illustrative purposes only. The measurement and position of each element is approximate and must be viewed as such. Intending purchasers should therefore satisfy themselves by inspection or otherwise as to their correctness. The vendors do not make or give, and neither Ashtons nor any person in their employment has any authority to make or give, any representation or warranty whatsoever in relation to this property. We offer a wide range of services through third party providers including solicitors, surveyors, removal firms, mortgage providers and EPC suppliers. We receive additional payments for administering suppliers quoting software and making referrals. You are not under any obligations to use these services and it is your discretion whether you choose to deal with these parties or your own preferred supplier. You should be aware the average payment we received in 2024 equated to £29.76 per referral.