
 2 Bedrooms

 2 Bathrooms

 2 Receptions

 Private Garden

 Street Parking

 EPC Band D

Freehold

Council Tax Band:
D £2,458.18 (2026/2027)

Local Authority:
St Albans District Council



 **ashtons**
for life's great moves

Grove Road, Harpenden, Hertfordshire, AL5 1EN
Guide price of £675,000

Exquisite character cottage near popular schools and open countryside.

Description

Positioned in the heart of the village, this charming cottage is impeccably presented with significant upgrades by the current owners. Spanning three floors, the 1st and 2nd floors feature two double bedrooms, with the Principal offering an en-suite shower, Juliet balcony, and built-in wardrobes. The 1st floor also boasts a luxurious family bathroom with an Italian-style bath and separate walk-in double shower. A utility area is conveniently located off the landing, accommodating both a washing machine and tumble dryer. The ground floor hosts a spacious lounge/dining room with frontal views, a large log burner, and integrated shelving, leading into a stunning kitchen/breakfast room. It features engineered Oak flooring, ample storage, a breakfast bar, Belfast sink, and space for both a Range cooker and dishwasher. Double glazed French doors open to a private South/Westerly garden with a large patio, Astroturf lawn, vibrant borders, and a brick-built storage shed.

Location

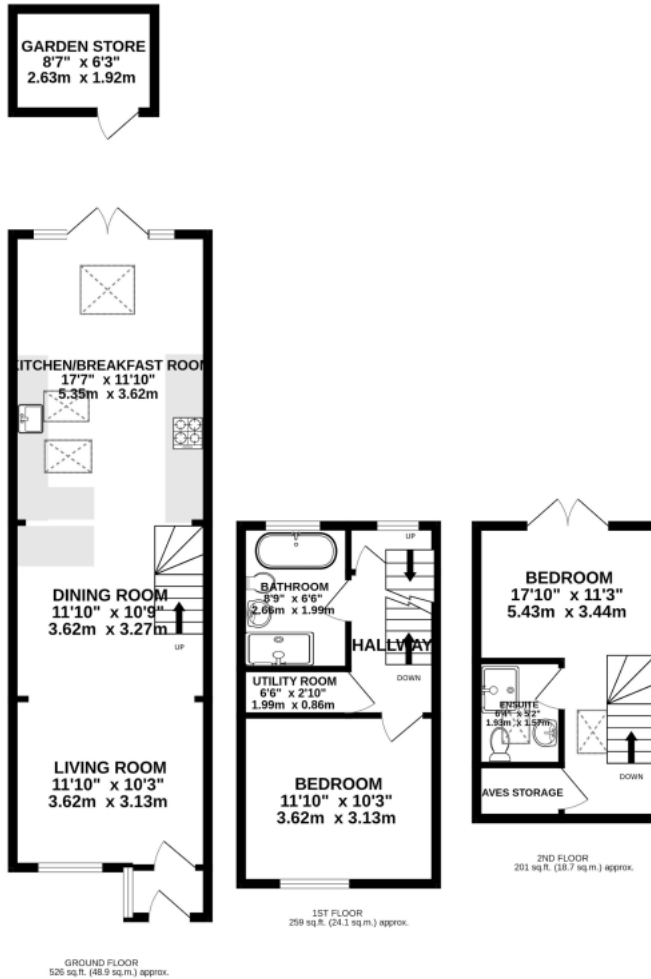
Situated on the southern fringes of Harpenden close to the excellent Grove School, the popular location of Southdown offers major shopping facilities, pubs and restaurants.



In compliance with the UK's Anti Money Laundering (AML) regulations, we are required to confirm the identity of all prospective buyers at the point of an offer being accepted and use a third party, Identity Verification System to do so. There is a nominal charge of £48 (per person) including VAT for this service. For more information, please refer to the terms and conditions section of our website.







This floorplan is for illustration purposes only, the measurements and position of each element are approximate and must be viewed as such

Important Information These particulars do not constitute an offer or contract in whole or part. The statements contained herein are made without responsibility on the part of Ashtons or the vendors and they cannot be relied upon as representatives of fact. In respect of floor plans, these are for illustrative purposes only. The measurement and position of each element is approximate and must be viewed as such. Intending purchasers should therefore satisfy themselves by inspection or otherwise as to their correctness. The vendors do not make or give, and neither Ashtons nor any person in their employment has any authority to make or give, any representation or warranty whatsoever in relation to this property. We offer a wide range of services through third party providers including solicitors, surveyors, removal firms, mortgage providers and EPC suppliers. We receive additional payments for administering suppliers quoting software and making referrals. You are not under any obligations to use these services and it is your discretion whether you choose to deal with these parties or your own preferred supplier. You should be aware the average payment we received in 2024 equated to £29.76 per referral.