

 5 Bedrooms

 3 Bathrooms

 2 Receptions

 Private Garden

 Off Street

 EPC Band C

Freehold

Council Tax Band:
E £3,004.44 (2026/2027)

Local Authority:
St Albans District Council



 **ashtons**
for life's great moves

Topstreet Way, Harpenden, Hertfordshire, AL5 5TS
Guide price of £1,375,000

OPEN DAY 30/05/2026. Stunning 5-bed home with no onward chain, just a short walk from Harpenden train station.

Description

OPEN DAY 30/05/2026. Discover this exquisite semi-detached home, thoughtfully extended and modernised. Arranged over three floors, it's perfect for growing families and commuters alike. The first and second floors boast five spacious bedrooms, including one en-suite, and two additional bath/shower rooms. Downstairs, the cosy lounge features a log burner, recessed shelving, and built-in storage. The superb kitchen/family room comes with ample storage, a central island/breakfast bar, and top-tier Siemens appliances like a wine cooler, double fridge-freezer space, and induction hob. The utility room offers extra storage, plumbing for laundry, and more. Full width, double-glazed sliding doors open to breathtaking Southerly gardens, with a raised patio, pergola, and steps leading down to a lush lawn with flower borders. There's also a versatile air-conditioned home office/gym. PLEASE NOTE: Photos taken pre-Tenancy.

Location

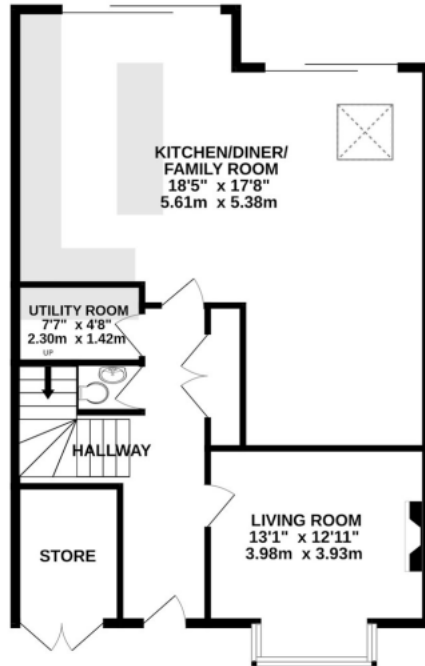
Within walking distance to town centre, Harpenden's train link (direct to St Pancras in under 30 mins), and Harpenden Common. Near Crabtree, High Beeches, the Grove JMI School, St Georges, Sir John Lawes, and Katherine Warrington Secondary Schools.



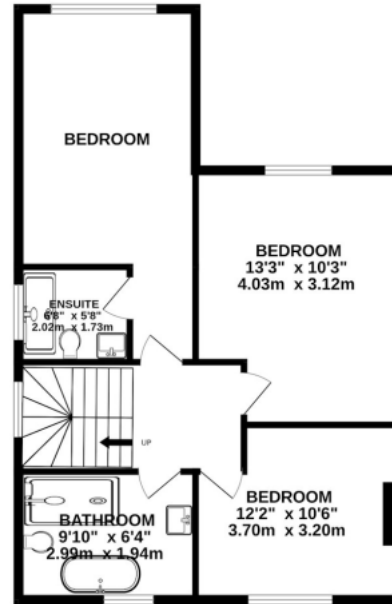
In compliance with the UK's Anti Money Laundering (AML) regulations, we are required to confirm the identity of all prospective buyers at the point of an offer being accepted and use a third party, Identity Verification System to do so. There is a nominal charge of £48 (per person) including VAT for this service. For more information, please refer to the terms and conditions section of our website.



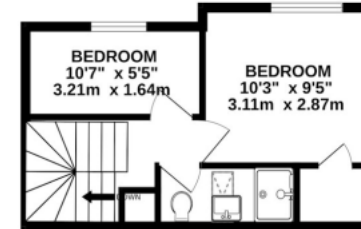




GROUND FLOOR
1004 sq.ft. (93.3 sq.m.) approx.



1ST FLOOR
682 sq.ft. (63.4 sq.m.) approx.



2ND FLOOR
259 sq.ft. (24.0 sq.m.) approx.

TOTAL FLOOR AREA : 1945 sq.ft. (180.7 sq.m.) approx.

This floorplan is for illustration purposes only, the measurements and position of each element are approximate and must be viewed as such.

Important Information These particulars do not constitute an offer or contract in whole or part. The statements contained herein are made without responsibility on the part of Ashtons or the vendors and they cannot be relied upon as representatives of fact. In respect of floor plans, these are for illustrative purposes only. The measurement and position of each element is approximate and must be viewed as such. Intending purchasers should therefore satisfy themselves by inspection or otherwise as to their correctness. The vendors do not make or give, and neither Ashtons nor any person in their employment has any authority to make or give, any representation or warranty whatsoever in relation to this property. We offer a wide range of services through third party providers including solicitors, surveyors, removal firms, mortgage providers and EPC suppliers. We receive additional payments for administering suppliers quoting software and making referrals. You are not under any obligations to use these services and it is your discretion whether you choose to deal with these parties or your own preferred supplier. You should be aware the average payment we received in 2024 equated to £29.76 per referral.