







-  3 Bedrooms
-  1 Bathroom
-  2 Receptions
-  Private Garden
-  Garage & Driveway
-  EPC Band D



Freehold

Council Tax Band:
E £3,004.44 (2026/2027)

Local Authority:
St Albans District Council

 **ashtons**
for life's great moves

Pipers Avenue, Harpenden, Hertfordshire, AL5 1HB
Guide price of £825,000

A spacious semi-detached three bedroom family home set in a wonderful location and in need of some updating.

Description

This spacious family semi is located within an extremely popular position close to Southdown village centre, countryside walks and the renowned Grove Primary School. On the first floor are three good sized bedrooms, family bathroom and separate cloakroom. Downstairs has been extended and comprises a large lounge/dining room and rear aspect garden room. The kitchen looks over the gorgeous private garden which has an expanse of lawn and well stocked flower and shrub borders whilst at the front is driveway parking and integral garage which has light and power.

Location

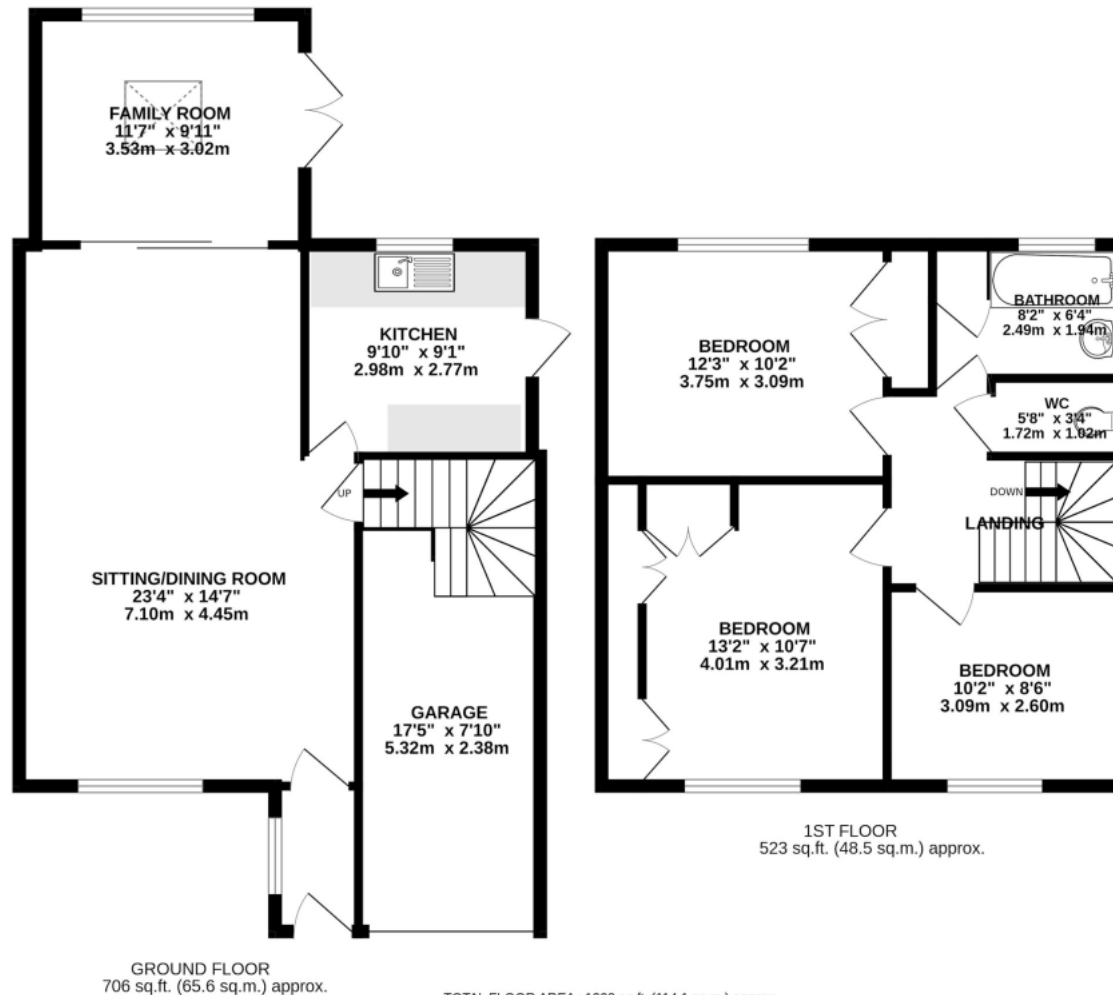
Set in a peaceful South Harpenden location, Pipers Avenue is home to a collection of attractive properties on large, private plots. This sought-after setting is ideal for families.



In compliance with the UK's Anti Money Laundering (AML) regulations, we are required to confirm the identity of all prospective buyers at the point of an offer being accepted and use a third party, Identity Verification System to do so. There is a nominal charge of £48 (per person) including VAT for this service. For more information, please refer to the terms and conditions section of our website.







This floorplan is for illustrative purposes only, the measurements and position of each element are approximate and must be viewed as such.

Important Information These particulars do not constitute an offer or contract in whole or part. The statements contained herein are made without responsibility on the part of Ashtons or the vendors and they cannot be relied upon as representatives of fact. In respect of floor plans, these are for illustrative purposes only. The measurement and position of each element is approximate and must be viewed as such. Intending purchasers should therefore satisfy themselves by inspection or otherwise as to their correctness. The vendors do not make or give, and neither Ashtons nor any person in their employment has any authority to make or give, any representation or warranty whatsoever in relation to this property. We offer a wide range of services through third party providers including solicitors, surveyors, removal firms, mortgage providers and EPC suppliers. We receive additional payments for administering suppliers quoting software and making referrals. You are not under any obligations to use these services and it is your discretion whether you choose to deal with these parties or your own preferred supplier. You should be aware the average payment we received in 2024 equated to £29.76 per referral.