 4 Bedrooms

 3 Bathrooms

 1 Reception

 Private Garden

 Driveway

 EPC Band C

Freehold

Council Tax Band:
F £3,550.70 (2026/2027)

Local Authority:
St Albans District Council



 **ashtons**
for life's great moves

Southview Road, Harpenden, AL5 5AP
Guide price of £925,000

Beautifully presented 4-bed detached home on Southview Rd, Harpenden. Set over 3 floors with oak flooring, stylish kitchen, garden, parking & close to schools, town & station.

Description

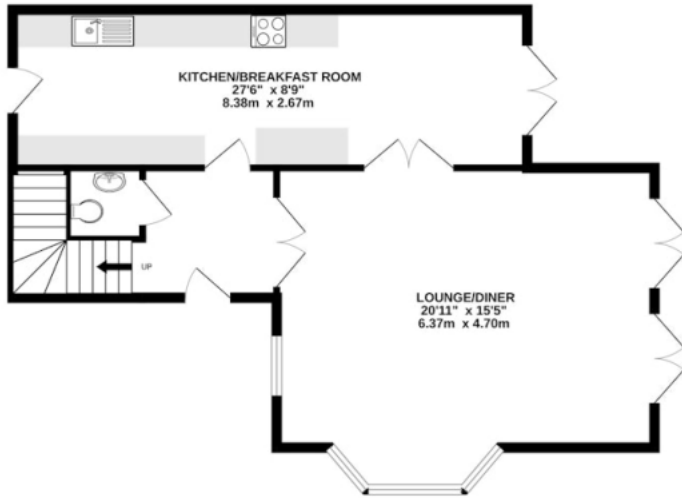
A beautifully presented contemporary four-bedroom detached family home, ideally positioned on the sought-after Southview Road in Harpenden. This impressive home offers well-balanced accommodation arranged over three floors and finished with elegant oak flooring throughout. The ground floor provides a welcoming and spacious layout, perfectly suited to modern family living. A superb dual-aspect lounge/dining room enjoys an abundance of natural light, enhanced by a sash-style bay window to the front and French glazed doors opening onto the rear garden. Glazed oak double doors lead through to a stylish, well-appointed kitchen/breakfast room, which also overlooks and provides direct access to the garden, ideal for both everyday living and entertaining. A striking oak staircase rises through the property, adding a warm and attractive focal point. To the first floor, there are three well-proportioned double bedrooms and a modern family bathroom. The principal bedroom benefits from a dedicated dressing area with fitted wardrobes, along with a modern en suite bathroom. The second floor offers a further generous double bedroom with its own en suite, making it an ideal guest suite. This level also includes a useful walk-in eaves storage cupboard. Externally, the property continues to impress. The front garden is block paved, providing off-road parking, and there is side gated access leading to the rear. The rear garden has been thoughtfully designed, featuring a paved patio area for outdoor seating, a neatly maintained lawn, and well-stocked borders.



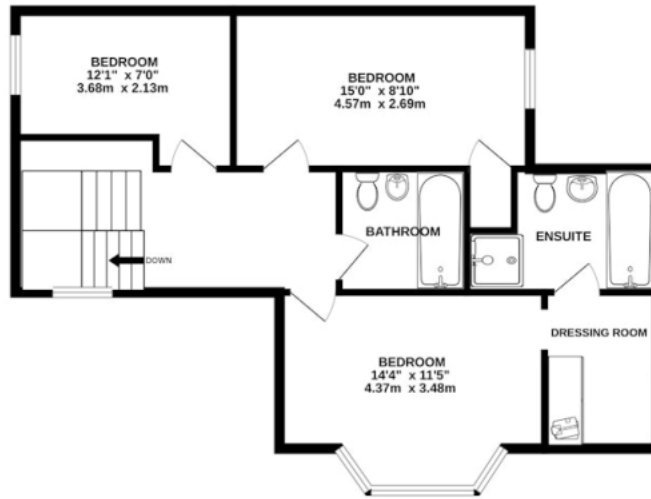
In compliance with the UK's Anti Money Laundering (AML) regulations, we are required to confirm the identity of all prospective buyers at the point of an offer being accepted and use a third party, Identity Verification System to do so. There is a nominal charge of £48 (per person) including VAT for this service. For more information, please refer to the terms and conditions section of our website.



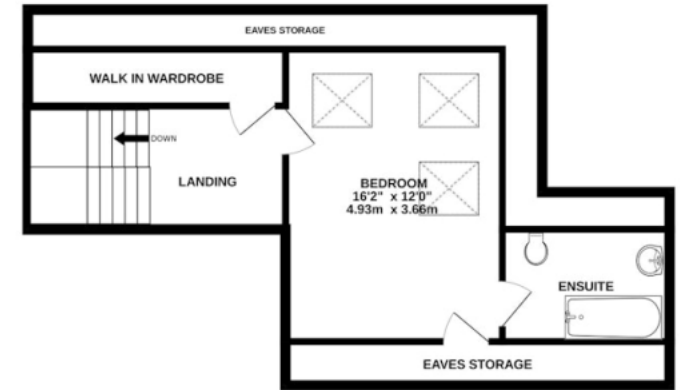




GROUND FLOOR
649 sq.ft. (60.3 sq.m.) approx.



1ST FLOOR
640 sq.ft. (59.5 sq.m.) approx.



2ND FLOOR
438 sq.ft. (40.7 sq.m.) approx.

TOTAL FLOOR AREA : 1727 sq.ft. (160.4 sq.m.) approx.

This floorplan is for illustration purposes only, the measurements and position of each element are approximate and must be viewed as such.

Important Information These particulars do not constitute an offer or contract in whole or part. The statements contained herein are made without responsibility on the part of Ashtons or the vendors and they cannot be relied upon as representatives of fact. In respect of floor plans, these are for illustrative purposes only. The measurement and position of each element is approximate and must be viewed as such. Intending purchasers should therefore satisfy themselves by inspection or otherwise as to their correctness. The vendors do not make or give, and neither Ashtons nor any person in their employment has any authority to make or give, any representation or warranty whatsoever in relation to this property. We offer a wide range of services through third party providers including solicitors, surveyors, removal firms, mortgage providers and EPC suppliers. We receive additional payments for administering suppliers quoting software and making referrals. You are not under any obligations to use these services and it is your discretion whether you choose to deal with these parties or your own preferred supplier. You should be aware the average payment we received in 2024 equated to £29.76 per referral.