


 3 Bedrooms

 1 Bathroom

 1 Reception

 Private Garden

 Garage & Driveway

 EPC Band C

Freehold

Council Tax Band:
D £2,458.18 (2026/2027)

Local Authority:
St Albans District Council



Situated in a sought-after cul-de-sac near excellent schools.
Chain Free.

Description

This beautifully presented three-bedroom semi-detached family home enjoys an excellent position, close to Southdown village centre, open countryside, and highly regarded local schools. The accommodation spans two floors. Upstairs, you'll find three well-proportioned bedrooms and a family bathroom. The ground floor offers a spacious lounge/dining room with patio doors leading to the rear garden, perfect for everyday living and entertaining. The fully fitted kitchen includes integrated appliances and a generous range of wall and base units for ample storage while overlooking the rear garden. The attractive garden, set on a secluded corner plot, features a large paved patio area, ideal for outdoor dining and entertaining, with the rest laid to lawn. A substantial timber garden shed provides extra storage. The front of the property offers driveway parking and a single garage equipped with power and lighting.

Location

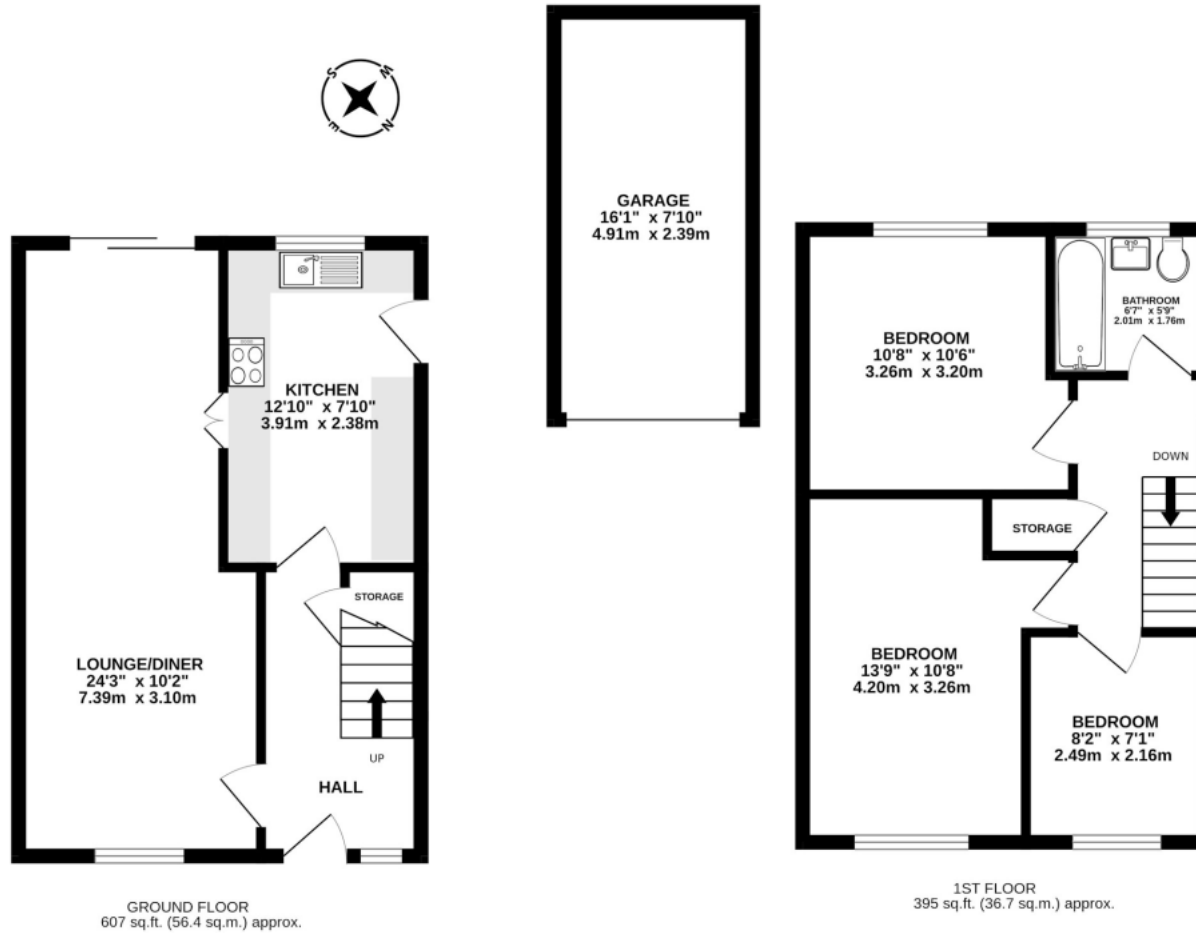
Error: HTTP callout failed with status code: 503 and body: upstream connect error or disconnect/reset before headers. reset reason: connection timeout



In compliance with the UK's Anti Money Laundering (AML) regulations, we are required to confirm the identity of all prospective buyers at the point of an offer being accepted and use a third party, Identity Verification System to do so. There is a nominal charge of £48 (per person) including VAT for this service. For more information, please refer to the terms and conditions section of our website.







Important Information These particulars do not constitute an offer or contract in whole or part. The statements contained herein are made without responsibility on the part of Ashtons or the vendors and they cannot be relied upon as representatives of fact. In respect of floor plans, these are for illustrative purposes only. The measurement and position of each element is approximate and must be viewed as such. Intending purchasers should therefore satisfy themselves by inspection or otherwise as to their correctness. The vendors do not make or give, and neither Ashtons nor any person in their employment has any authority to make or give, any representation or warranty whatsoever in relation to this property. We offer a wide range of services through third party providers including solicitors, surveyors, removal firms, mortgage providers and EPC suppliers. We receive additional payments for administering suppliers quoting software and making referrals. You are not under any obligations to use these services and it is your discretion whether you choose to deal with these parties or your own preferred supplier. You should be aware the average payment we received in 2024 equated to £29.76 per referral.