
 2 Bedrooms

 2 Bathrooms

 1 Reception

 EPC Band B

Council Tax Band:
E £3,004.44 (2026/2027)



Superbly presented first floor 2-bedroom apartment in the heart of town centre with parking.

Description

This central apartment is in excellent order, offering bright, airy, and spacious accommodation with two good-sized bedrooms, an en-suite shower room, and an additional bathroom. The fully fitted kitchen features numerous wall and base storage units and built-in appliances, including a four-burner gas hob, extractor fan, electric fan-assisted oven and microwave, fridge/freezer. One private allocated parking space is included.

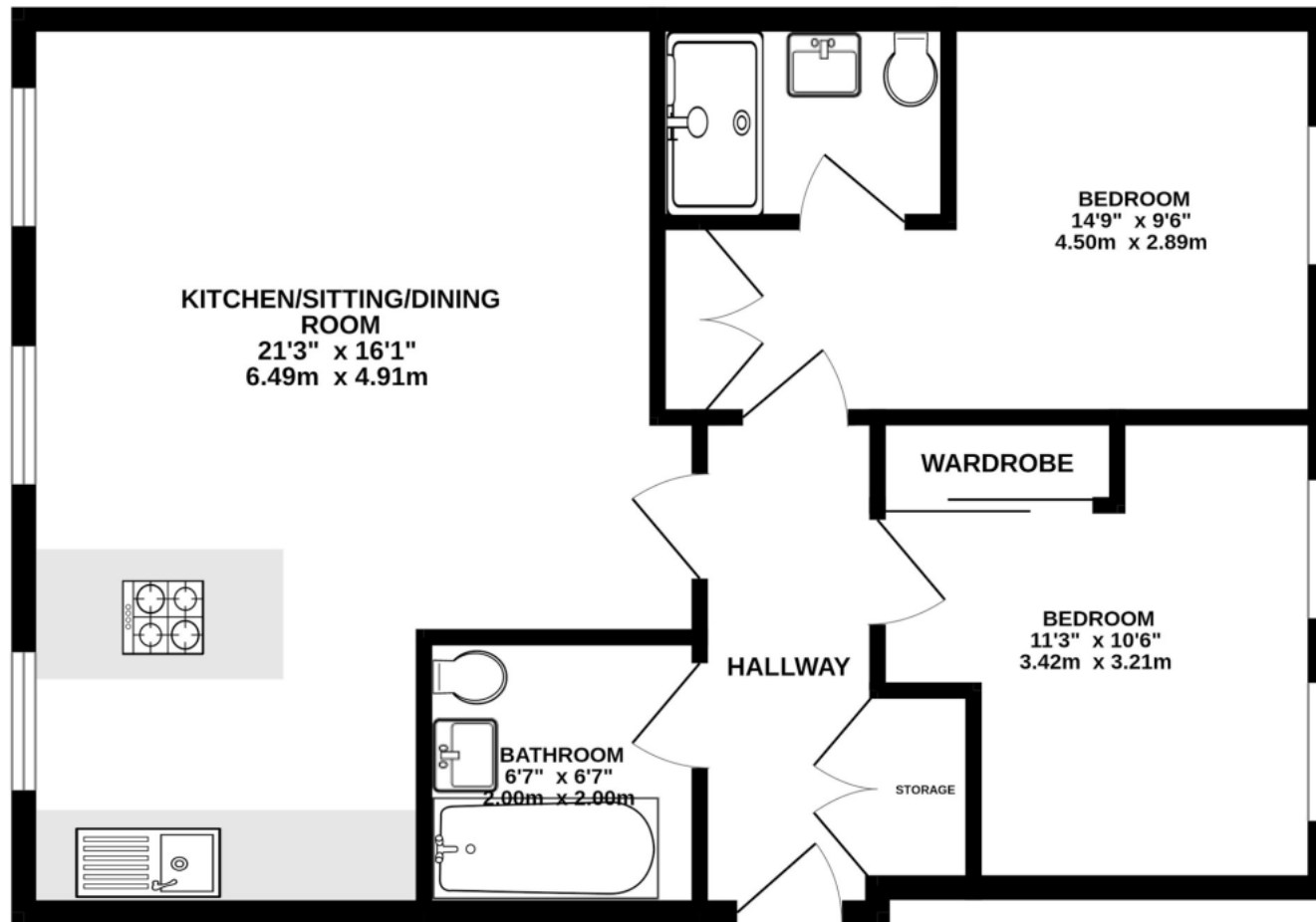
Location

Pembroke Court is nestled in the heart of Harpenden's picturesque Victorian centre, offering a perfect blend of charm and convenience for family living.









TOTAL FLOOR AREA : 651 sq.ft. (60.5 sq.m.) approx.

This floorplan is for illustration purposes only. The measurements and position of each element are approximate and must be viewed as such.

Important Information These particulars do not constitute an offer or contract in whole or part. The statements contained herein are made without responsibility on the part of Ashtons or the vendors and they cannot be relied upon as representatives of fact. In respect of floor plans, these are for illustrative purposes only. The measurement and position of each element is approximate and must be viewed as such. Intending purchasers should therefore satisfy themselves by inspection or otherwise as to their correctness. The vendors do not make or give, and neither Ashtons nor any person in their employment has any authority to make or give, any representation or warranty whatsoever in relation to this property. We offer a wide range of services through third party providers including solicitors, surveyors, removal firms, mortgage providers and EPC suppliers. We receive additional payments for administering suppliers quoting software and making referrals. You are not under any obligations to use these services and it is your discretion whether you choose to deal with these parties or your own preferred supplier. You should be aware the average payment we received in 2024 equated to £29.76 per referral.