


 3 Bedrooms

 2 Bathrooms

 3 Receptions

 Private Garden

 Street Parking

 EPC Band D

Freehold

Council Tax Band:  
D £2,458.18 (2026/2027)

Local Authority:  
St Albans District Council



High-standard renovated 3-bed Victorian terrace with 3 receptions, en-suite principal, landscaped garden, extension potential (STPP).

### Description

Open Day 25/04/2026 This beautifully renovated three-bedroom Victorian terraced cottage offers exceptional living space in a desirable Harpenden location. Refurbished to an exacting standard, it blends contemporary comfort with charming period features and has scope for further extension (STPP). Accommodation includes three reception rooms, a generous principal bedroom with en-suite, and a sunny south-west facing garden. The home is updated for space and functionality while preserving original character. The ground floor features a main reception with a bay window, wooden shutters, and a wood-burning stove. A second room offers dining or family space. The light-filled kitchen has ample storage and integrated appliances, leading to a versatile conservatory with French doors opening to a terrace. The first floor has two well-proportioned bedrooms and a modern bathroom. The top floor boasts a principal suite with extensive storage and a stylish en-suite. The front has an attractive raised bed garden, and the private rear garden is landscaped with rockery, lawn, and flower beds, having a paved patio and useful rear access.

### Location

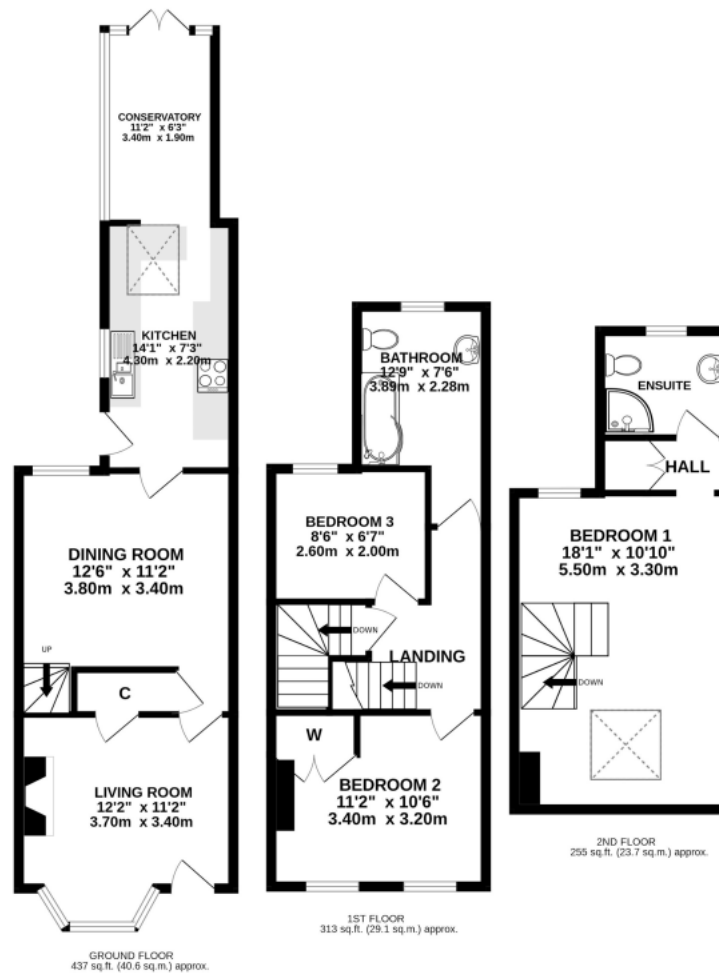
Fantastic family home in popular East Harpenden road. Shops, excellent schools, and Lea Valley Nature Reserve within a 5-minute walk, ideal for families. Harpenden town and station are 1 mile away, providing access to central London in 30 minutes.

Buyers Information: - In compliance with the UK's Anti Money Laundering (AML) regulations, we are required to confirm the identity of all prospective buyers at the point of an offer being accepted and use a third party, Identity Verification System to do so. There is a nominal charge of £48 (per person) including VAT for this service. For more information, please refer to the terms and conditions section of our website.









TOTAL FLOOR AREA : 1005sq.ft. (93.4 sq.m.) approx.

This floorplan is for illustration purposes only, the measurements and position of each element are approximate and must be viewed on site

**Important Information** These particulars do not constitute an offer or contract in whole or part. The statements contained herein are made without responsibility on the part of Ashtons or the vendors and they cannot be relied upon as representatives of fact. In respect of floor plans, these are for illustrative purposes only. The measurement and position of each element is approximate and must be viewed as such. Intending purchasers should therefore satisfy themselves by inspection or otherwise as to their correctness. The vendors do not make or give, and neither Ashtons nor any person in their employment has any authority to make or give, any representation or warranty whatsoever in relation to this property. We offer a wide range of services through third party providers including solicitors, surveyors, removal firms, mortgage providers and EPC suppliers. We receive additional payments for administering suppliers quoting software and making referrals. You are not under any obligations to use these services and it is your discretion whether you choose to deal with these parties or your own preferred supplier. You should be aware the average payment we received in 2024 equated to £29.76 per referral.