



 3 Bedrooms

 2 Bathrooms

 2 Receptions

 Private Garden

 Off Street

 EPC Band C

Council Tax Band:  
E £3,004.44 (2026/2027)

Local Authority:  
St Albans District Council



 **ashtons**  
for life's great moves

Holly Walk, Harpenden, Hertfordshire, AL5 5RG  
Guide price of £795,000

Impeccably finished 3-bed family home in quiet cul-de-sac, stylish open-plan living, landscaped garden, prime Harpenden location near station & town centre.

### Description

OPEN DAY 18th April. This exceptional three double bedroom family home, extended and renovated to an exacting standard, is nestled in a desirable cul-de-sac, offering privacy and convenience. The well-balanced accommodation includes an inviting entrance hall, a convenient WC, a cosy living room, and a superb open-plan kitchen/dining/family space with high-quality fittings on the ground floor, leading to a rear patio. The first floor features a spacious principal bedroom with en-suite, two additional double bedrooms, and a modern family bathroom. Externally, the property boasts a landscaped garden with a patio, raised beds, artificial lawn, and a garden studio/home office. Located on Holly Walk, it offers tranquillity and easy access to Harpenden's amenities, schools, and transport links. Plans for a loft conversion with an ensuite are drawn up, pending local authority approval.

### Location

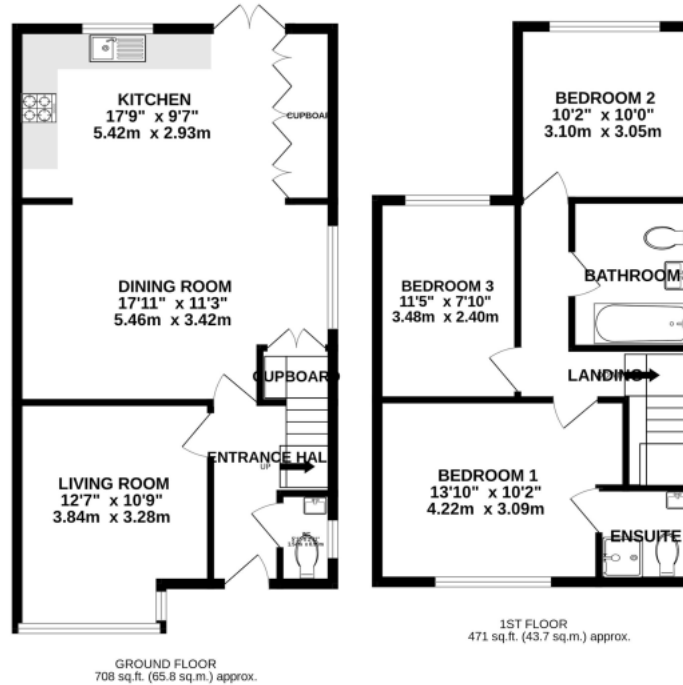
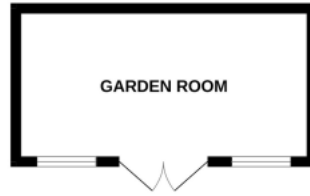
Holly walk is a peaceful cul-de-sac in the heart of the Crabtree area of Harpenden. The characterful mix of properties in the street and the family friendly environment make this an excellent location for any young family.



Buyers Information: - In compliance with the UK's Anti Money Laundering (AML) regulations, we are required to confirm the identity of all prospective buyers at the point of an offer being accepted and use a third party, Identity Verification System to do so. There is a nominal charge of £48 (per person) including VAT for this service. For more information, please refer to the terms and conditions section of our website.







This floorplan is for illustration purposes only. The measurements and position are approximate and must be viewed as such.

**Important Information** These particulars do not constitute an offer or contract in whole or part. The statements contained herein are made without responsibility on the part of Ashtons or the vendors and they cannot be relied upon as representatives of fact. In respect of floor plans, these are for illustrative purposes only. The measurement and position of each element is approximate and must be viewed as such. Intending purchasers should therefore satisfy themselves by inspection or otherwise as to their correctness. The vendors do not make or give, and neither Ashtons nor any person in their employment has any authority to make or give, any representation or warranty whatsoever in relation to this property. We offer a wide range of services through third party providers including solicitors, surveyors, removal firms, mortgage providers and EPC suppliers. We receive additional payments for administering suppliers quoting software and making referrals. You are not under any obligations to use these services and it is your discretion whether you choose to deal with these parties or your own preferred supplier. You should be aware the average payment we received in 2024 equated to £29.76 per referral.