 4 Bedrooms

 2 Bathrooms

 2 Receptions

 Private Garden

 Driveway

 EPC Band E

Freehold

Council Tax Band:
E £2,963.08 (2026/27)

Local Authority:
Central Beds District Council



 **ashtons**
for life's great moves

London Road, Luton, LU1 4LE
Guide price of £675,000

Spacious family home in semi-rural location with large private gardens and outbuildings.

Description

This beautiful Victorian property is set on a large plot, originally part of the Luton Hoo Estate, backing onto open countryside and a short drive from Harpenden Town Centre and Station. Arranged over two floors, the first has four bedrooms, the Principal with an en-suite shower room and a further family bathroom. Downstairs is a fully fitted kitchen overlooking the gardens with built-in appliances including a double oven, hob, extractor fan, dishwasher, fridge/freezer, breakfast bar, and storage units. The frontal aspect living room features a brick-built fireplace with wood burner and timber mantle, and the downstairs cloakroom has built-in storage cupboards. Outside, the private gardens boast a timber-built entertaining deck, lawn, and multi-purpose barn/storage units.

Location

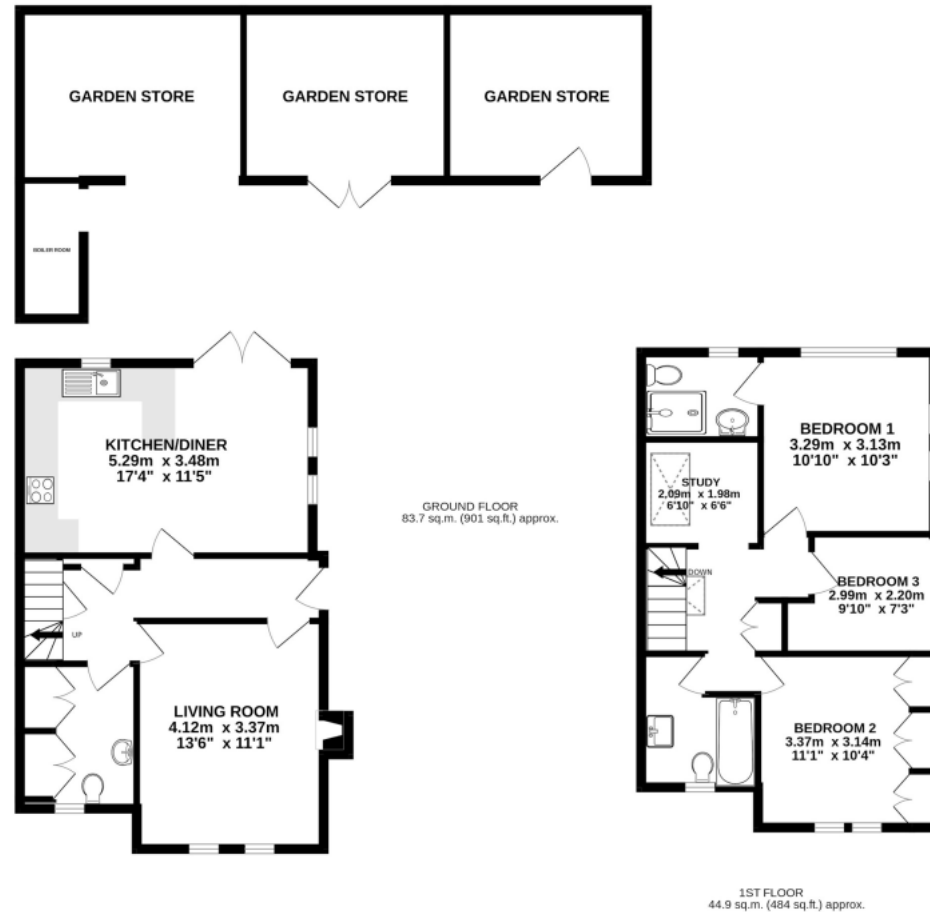
Formally part of the Luton Hoo Estate these popular cottages are well positioned between the bustling village of Harpenden and the busy town of Luton.



Buyers Information: - In compliance with the UK's Anti Money Laundering (AML) regulations, we are required to confirm the identity of all prospective buyers at the point of an offer being accepted and use a third party, Identity Verification System to do so. There is a nominal charge of £48 (per person) including VAT for this service. For more information, please refer to the terms and conditions section of our website.







Important Information These particulars do not constitute an offer or contract in whole or part. The statements contained herein are made without responsibility on the part of Ashtons or the vendors and they cannot be relied upon as representatives of fact. In respect of floor plans, these are for illustrative purposes only. The measurement and position of each element is approximate and must be viewed as such. Intending purchasers should therefore satisfy themselves by inspection or otherwise as to their correctness. The vendors do not make or give, and neither Ashtons nor any person in their employment has any authority to make or give, any representation or warranty whatsoever in relation to this property. We offer a wide range of services through third party providers including solicitors, surveyors, removal firms, mortgage providers and EPC suppliers. We receive additional payments for administering suppliers quoting software and making referrals. You are not under any obligations to use these services and it is your discretion whether you choose to deal with these parties or your own preferred supplier. You should be aware the average payment we received in 2024 equated to £29.76 per referral.