







-  3 Bedrooms
-  1 Bathroom
-  2 Receptions
-  Private Garden
-  Garage & Driveway
-  EPC Band D

Freehold

Council Tax Band:
E £2,863.15 (2025/26)

Local Authority:
St Albans District Council



OPEN DAY 6th September No onward chain. Magnificent family home in prestigious Poets location, central Harpenden.

Description

OPEN DAY 6th September A super three bedroom semi-detached family home on Byron Road in central Harpenden. Byron Road is conveniently located near Thameslink station, the High Street, and renowned Harpenden schooling. This charming house offers convenience and potential for development (subject to planning). The light and bright property, arranged over two floors, includes three good sized bedrooms and a family bathroom upstairs. Downstairs, there are two spacious reception rooms, with the front facing lounge featuring a flame effect gas fire and ornamental marble surround. The rear aspect kitchen offers views of the rear garden and has built-in appliances including a dishwasher, washing machine, and cooker, along with various storage cupboards. Outside, the secluded garden measures approximately 120ft in depth, featuring a large paved patio, shaped lawn, established shrubs and trees, and a timber built garden storage shed.

Location

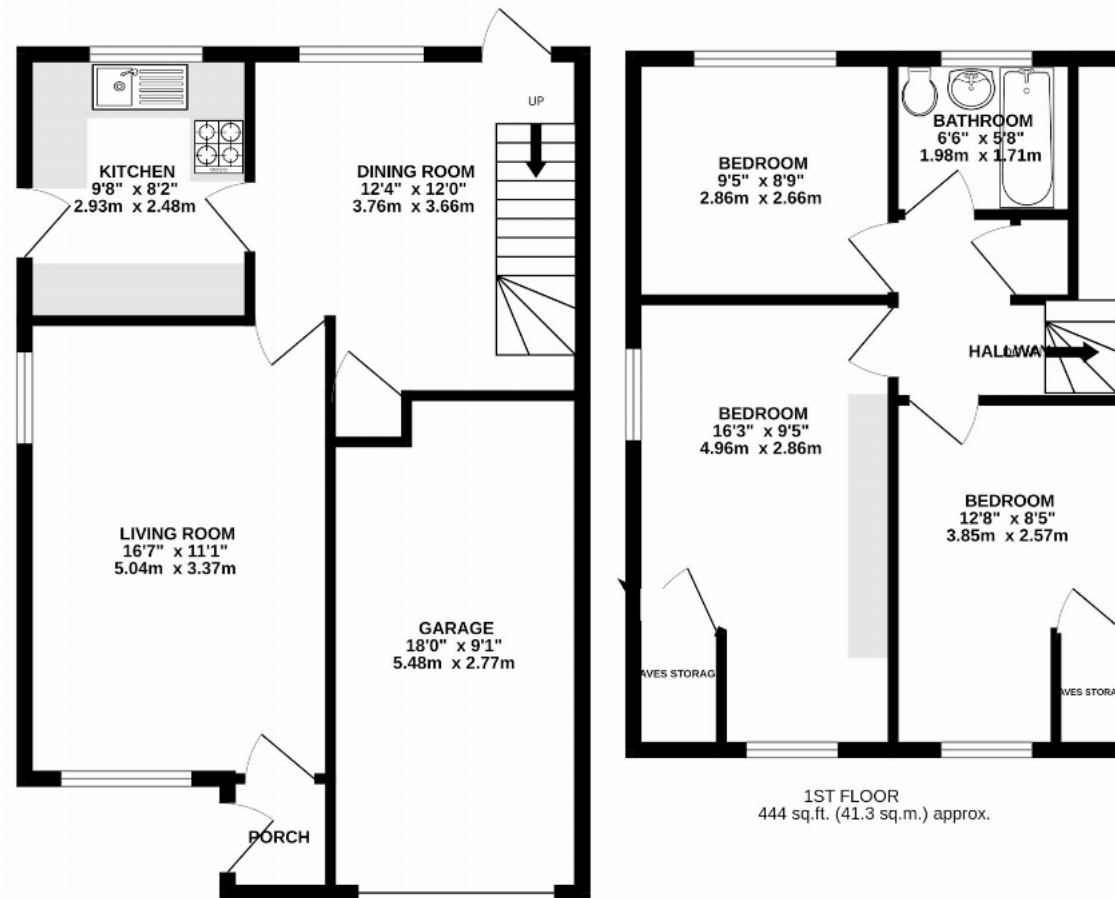
Harpenden's 'Poets' area is an exclusive setting, fusing a charming assortment of characterful homes from all the epochs of Harpenden's development. The Victorian town centre is within a short stroll and offers a pleasant tree-lined High Street and



Buyers Information: - In compliance with the UK's Anti Money Laundering (AML) regulations, we are required to confirm the identity of all prospective buyers at the point of an offer being accepted and use a third party, Identity Verification System to do so. There is a nominal charge of £48 (per person) including VAT for this service. For more information, please refer to the terms and conditions section of our website.







This floorplan is for illustration purposes only. The measurements and position of each element are approximate and must be viewed as such.

Important Information These particulars do not constitute an offer or contract in whole or part. The statements contained herein are made without responsibility on the part of Ashtons or the vendors and they cannot be relied upon as representatives of fact. In respect of floor plans, these are for illustrative purposes only. The measurement and position of each element is approximate and must be viewed as such. Intending purchasers should therefore satisfy themselves by inspection or otherwise as to their correctness. The vendors do not make or give, and neither Ashtons nor any person in their employment has any authority to make or give, any representation or warranty whatsoever in relation to this property. We offer a wide range of services through third party providers including solicitors, surveyors, removal firms, mortgage providers and EPC suppliers. We receive additional payments for administering suppliers quoting software and making referrals. You are not under any obligations to use these services and it is your discretion whether you choose to deal with these parties or your own preferred supplier. You should be aware the average payment we received in 2024 equated to £29.76 per referral.