

 2 Bedrooms

 2 Bathrooms

 1 Reception

 EPC Band C

Council Tax Band:  
C £0.00 ()



Bright two-bedroom 1st floor flat, half a mile from High Street and station. Offers lovely common views and allocated parking space.

### Description

The accommodation includes an entrance hall with entry phone system and storage cupboard, leading to a spacious open plan kitchen/living room/diner overlooking Harpenden Common. The principal bedroom, also with these views, features built-in wardrobes and an ensuite shower room. A well-sized second bedroom is serviced by the family bathroom. Outside are communal gardens and one allocated parking space.

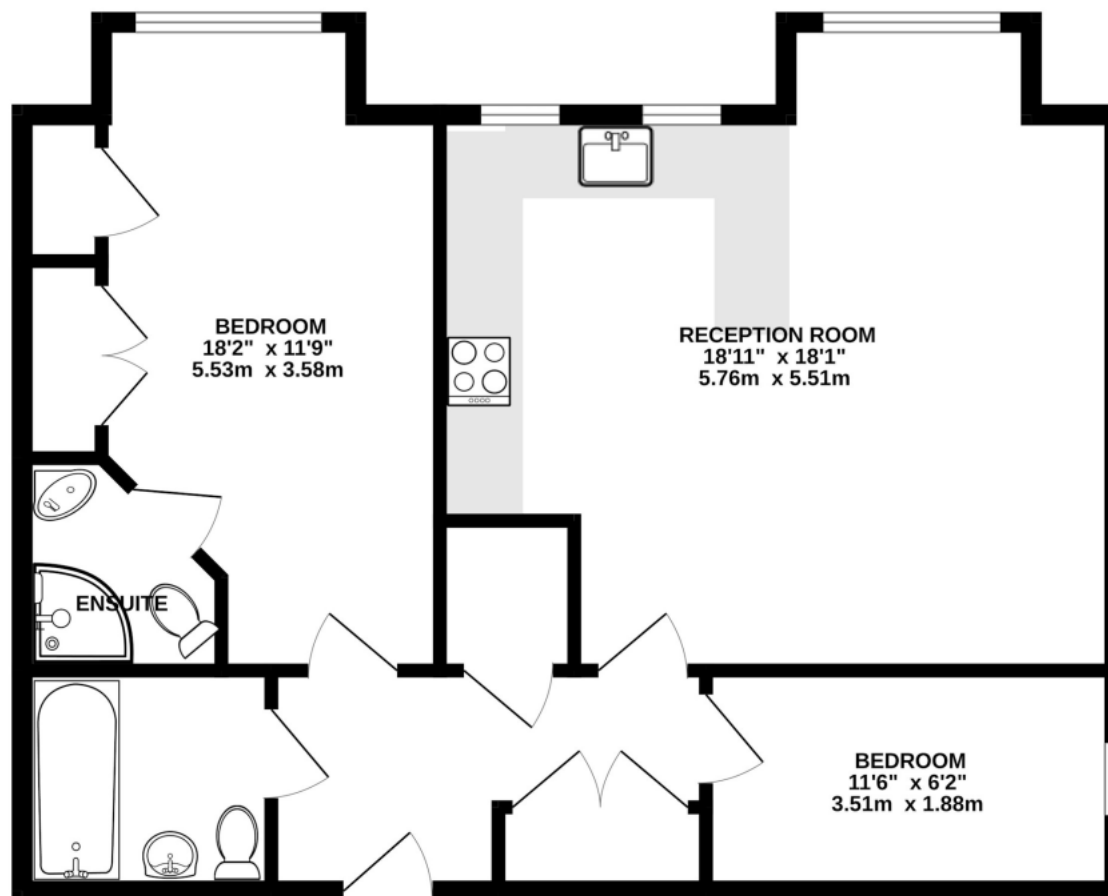
### Location

Kings Court is a modern luxury apartment development in central Harpenden, steps from Southdown's shops and a 10-minute walk to the high street and station. The front penthouse overlooks Harpenden Common and includes allocated parking.









TOTAL FLOOR AREA : 732 sq.ft. (68.0 sq.m.) approx.

This floorplan is for illustration purposes only. The measurements and position of each element are approximate and must be viewed as such.

**Important Information** These particulars do not constitute an offer or contract in whole or part. The statements contained herein are made without responsibility on the part of Ashtons or the vendors and they cannot be relied upon as representatives of fact. In respect of floor plans, these are for illustrative purposes only. The measurement and position of each element is approximate and must be viewed as such. Intending purchasers should therefore satisfy themselves by inspection or otherwise as to their correctness. The vendors do not make or give, and neither Ashtons nor any person in their employment has any authority to make or give, any representation or warranty whatsoever in relation to this property. We offer a wide range of services through third party providers including solicitors, surveyors, removal firms, mortgage providers and EPC suppliers. We receive additional payments for administering suppliers quoting software and making referrals. You are not under any obligations to use these services and it is your discretion whether you choose to deal with these parties or your own preferred supplier. You should be aware the average payment we received in 2024 equated to £29.76 per referral.