

 3 Bedrooms

 2 Bathrooms

 1 Reception

 EPC Band D

Freehold

Council Tax Band:  
E £2,863.15 (25/26)

Local Authority:  
St Albans District Council



 **ashtons**  
for life's great moves

Lower Luton Road, Wheathampstead, St. Albans, AL4 8HT  
**Guide price of £600,000**



Beautifully presented semi-detached bungalow with spacious accommodation, close to popular schools.

### Description

This wonderful semi-detached family bungalow offers delightful views across the River Lea towards Aldwickbury Golf Course. Set in an elevated position from Lower Luton Road, the bright and spacious accommodation includes three good-sized bedrooms and a family bathroom, plus a separate shower room. A glazed conservatory with Karndean flooring provides access to the beautiful gardens. The large lounge/dining room is front-facing, while the fully fitted kitchen features ample storage, ceramic tiled flooring, granite work surfaces, an integrated dishwasher, Range cooker, extractor fan, and integrated fridge, freezer, and washing machine. The secluded gardens include a timber home office with a telephone point, entertaining patio, lawn, well-stocked borders, and a raised decked area. The front offers a two-car driveway and attached garage with light and power.

### Location

Situated off Lower Luton Road between Harpenden and Wheathampstead, this bungalow offers stunning countryside views over Lea Valley. With popular schools nearby, Harpenden Station and Town Centre are just 1.5 miles or a 5-minute drive away.



Buyers Information: - In compliance with the UK's Anti Money Laundering (AML) regulations, we are required to confirm the identity of all prospective buyers at the point of an offer being accepted and use a third party, Identity Verification System to do so. There is a nominal charge of £48 (per person) including VAT for this service. For more information, please refer to the terms and conditions section of our website.

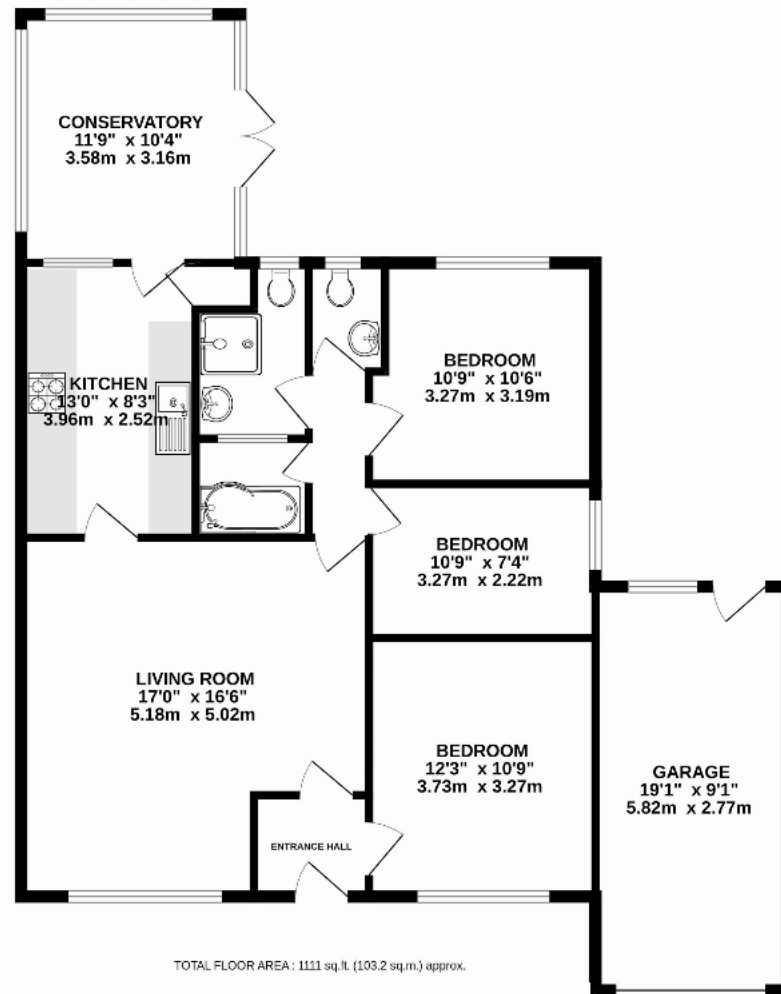












This floorplan is for illustration purposes only. The measurements and position of each element are approximate and must be viewed as such.

**Important Information** These particulars do not constitute an offer or contract in whole or part. The statements contained herein are made without responsibility on the part of Ashtons or the vendors and they cannot be relied upon as representatives of fact. In respect of floor plans, these are for illustrative purposes only. The measurement and position of each element is approximate and must be viewed as such. Intending purchasers should therefore satisfy themselves by inspection or otherwise as to their correctness. The vendors do not make or give, and neither Ashtons nor any person in their employment has any authority to make or give, any representation or warranty whatsoever in relation to this property. We offer a wide range of services through third party providers including solicitors, surveyors, removal firms, mortgage providers and EPC suppliers. We receive additional payments for administering suppliers quoting software and making referrals. You are not under any obligations to use these services and it is your discretion whether you choose to deal with these parties or your own preferred supplier. You should be aware the average payment we received in 2024 equated to £29.76 per referral.