







-  4 Bedrooms
-  2 Bathrooms
-  2 Receptions
-  Private Garden
-  Garage & Driveway
-  EPC Band D



Freehold

Council Tax Band:  
F £3,550.70 (2026/2027)

Local Authority:  
St Albans District Council

Stylish, extended 4-bed home with open-plan living, landscaped garden, garage & parking in prime Harpenden, close to station, town & top schools.

### Description

A simply breath-taking home, creatively extended and wonderfully finished throughout. The interior design magnifies the accommodation beautifully to create a home rarely found in the market today. White rendered walls set off by sleek grey roof lines give a highly contemporary feel. The generous entrance hall sets the tone of the property. The living and kitchen space is entirely open plan, extending to 33' in depth. Flooded with light, it is intelligently zoned into living space, dining area, and high-quality kitchen with Shaker style units and off-white quartz surfaces. Bi-folding doors allow access to the charming garden. A cloakroom and utility room complete the downstairs. Upstairs are four beautifully appointed bedrooms served by an ensuite shower room and capacious family bathroom. Externally, an oversized detached garage and extensive parking are available. The rear garden is carefully landscaped with patio areas, lawn, and a recently installed garden cabin with fast Ethernet connection. No onward chain.

### Location

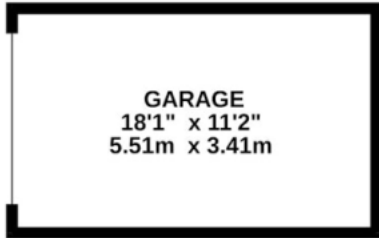
Station Road presents a wonderful setting for family life. The mix of contemporary and characterful houses that accompany this wonderful property present a wealth of charm and the convenience of the central setting.

In compliance with the UK's Anti Money Laundering (AML) regulations, we are required to confirm the identity of all prospective buyers at the point of an offer being accepted and use a third party, Identity Verification System to do so. There is a nominal charge of £48 (per person) including VAT for this service. For more information, please refer to the terms and conditions section of our website.

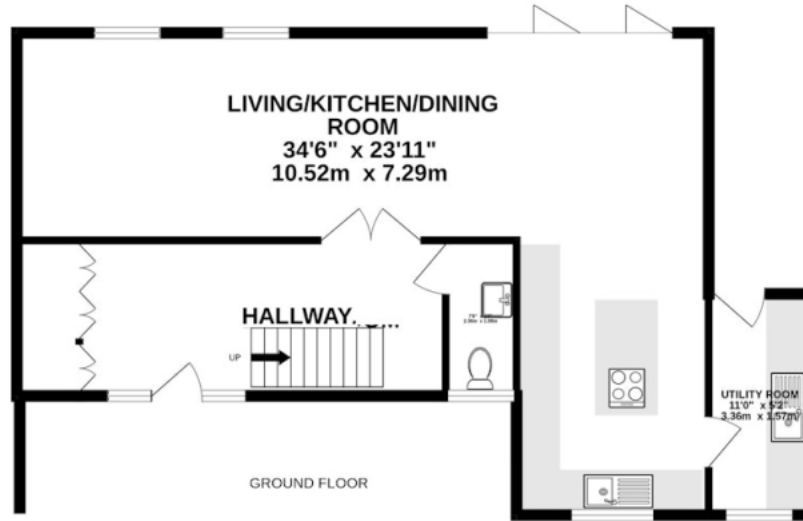








OUTBUILDING



TOTAL FLOOR AREA : 1630sq.ft. (151.4 sq.m.) approx.

This floorplan is for illustration purposes only. The measurements and position of each image are approximate and must be viewed as such.

**Important Information** These particulars do not constitute an offer or contract in whole or part. The statements contained herein are made without responsibility on the part of Ashtons or the vendors and they cannot be relied upon as representatives of fact. In respect of floor plans, these are for illustrative purposes only. The measurement and position of each element is approximate and must be viewed as such. Intending purchasers should therefore satisfy themselves by inspection or otherwise as to their correctness. The vendors do not make or give, and neither Ashtons nor any person in their employment has any authority to make or give, any representation or warranty whatsoever in relation to this property. We offer a wide range of services through third party providers including solicitors, surveyors, removal firms, mortgage providers and EPC suppliers. We receive additional payments for administering suppliers quoting software and making referrals. You are not under any obligations to use these services and it is your discretion whether you choose to deal with these parties or your own preferred supplier. You should be aware the average payment we received in 2024 equated to £29.76 per referral.