



4 bedrooms



2 bathrooms



2 receptions



Private Garden



Residence Parking



EPC Band D

Freehold

Council Tax Band:
D £2,342.57 (25/26)

Local Authority:
St Albans District Council



Superbly presented 4-bed extended family home close to local shops, excellent schooling & countryside.

Description

Situated near the River Lea, this four-bedroom semi-detached family home has been thoughtfully extended on the second floor, offering ample space for comfortable family living. A welcoming entrance hall leads to a large open plan kitchen/family/dining room, combining practicality and smoothness of design with views out to the rear garden. A downstairs cloakroom, separate utility room, and lounge to the front with bay window complete the ground floor. The accommodation is spectacular, boasting four generously proportioned double bedrooms that offer comfort and privacy for the whole family, serviced by the large family bathroom. The second floor houses a glorious loft conversion with distant views over the Lea valley to the front and a useful en-suite shower room. The secluded North-East facing garden extends approximately 55 feet with a large storage shed to the rear and access to the side of the house. A patio to the front of the garden offers space for outdoor living and entertaining.

Location

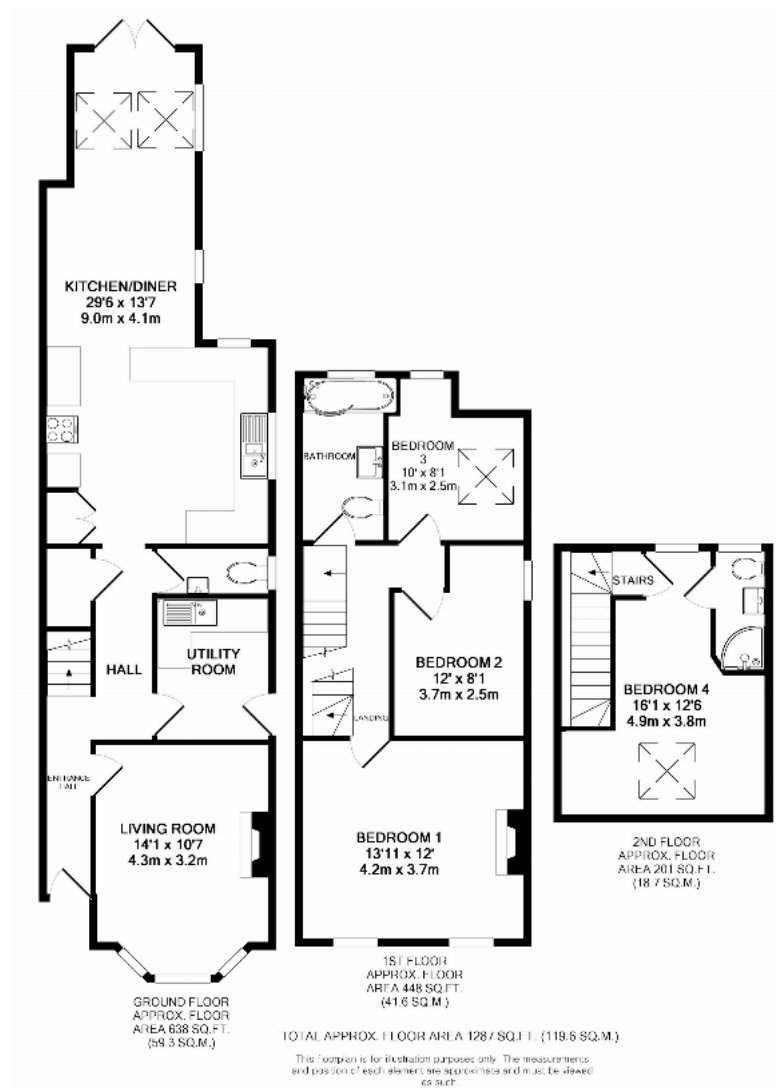
Fantastic family home in popular East Harpenden road. Local shops, excellent schools, and Lea Valley Nature Reserve are all within a 5-min walk, ideal for families. Harpenden town and station offer 30-min central London access, just 1 mile away.



Buyers Information: - In compliance with the UK's Anti Money Laundering (AML) regulations, we are required to confirm the identity of all prospective buyers at the point of an offer being accepted and use a third party, Identity Verification System to do so. There is a nominal charge of £48 (per person) including VAT for this service. For more information, please refer to the terms and conditions section of our website.







Important Information These particulars do not constitute an offer or contract in whole or part. The statements contained herein are made without responsibility on the part of Ashtons or the vendors and they cannot be relied upon as representatives of fact. In respect of floor plans, these are for illustrative purposes only. The measurement and position of each element is approximate and must be viewed as such. Intending purchasers should therefore satisfy themselves by inspection or otherwise as to their correctness. The vendors do not make or give, and neither Ashtons nor any person in their employment has any authority to make or give, any representation or warranty whatsoever in relation to this property. We offer a wide range of services through third party providers including solicitors, surveyors, removal firms, mortgage providers and EPC suppliers. We receive additional payments for administering suppliers quoting software and making referrals. You are not under any obligations to use these services and it is your discretion whether you choose to deal with these parties or your own preferred supplier. You should be aware the average payment we received in 2024 equated to £29.76 per referral.