 2 Bedrooms

 1 Bathroom

 1 Reception

 EPC Band C

Council Tax Band:
D £0.00 ()



A well-presented and spacious first floor apartment within moments of Harpenden station and town centre.

Description

This bright and airy two-bedroom apartment overlooks the communal gardens at the rear. The spacious reception room opens onto a private balcony, also accessible from the main bedroom. The reception room leads to a well-equipped kitchen with ample appliances and storage. Additional storage is provided by three large cupboards in the hallway. The main bedroom features built-in wardrobes and balcony access. There's a well-proportioned second bedroom and a modern bathroom with a shower over the bath. The property includes one allocated parking space.

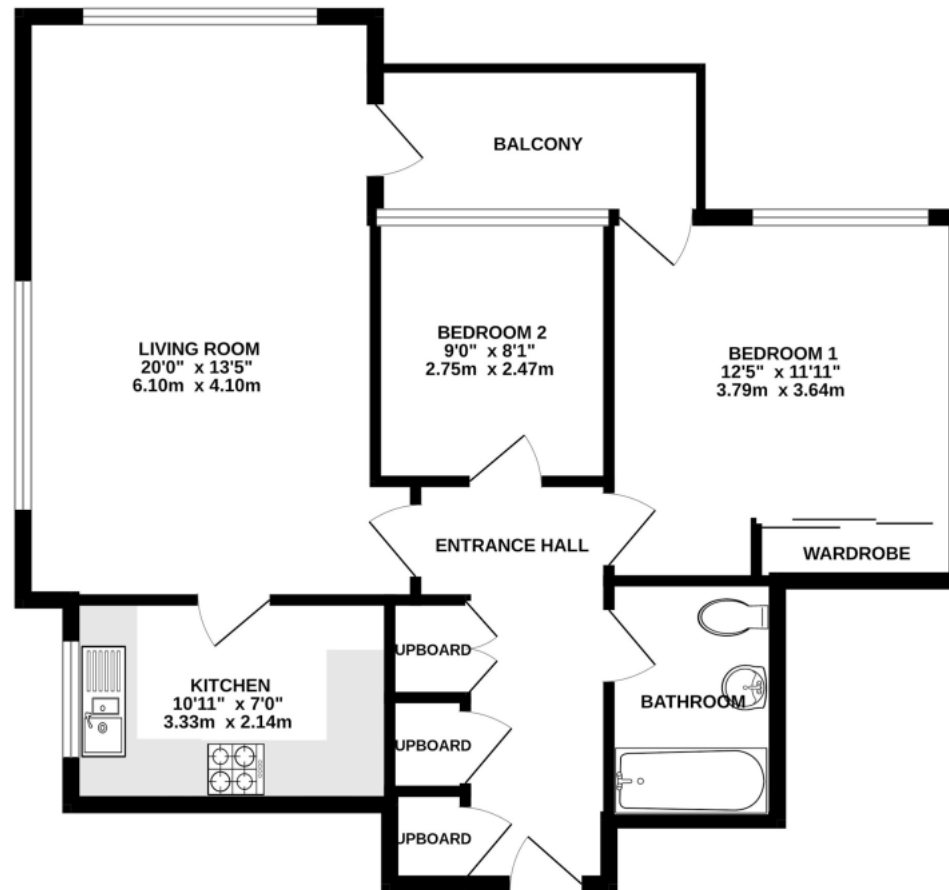
Location

Beaumont Court is a terrific development of large apartments in a well-kept block within a short stroll of all of Harpenden's amenities. Harpenden station offering direct access to St Pancras International is within two minutes on foot and the Town c









TOTAL FLOOR AREA: 693 sq.ft. (64.4 sq.m.) approx.

This floorplan is for illustration purposes only. The measurements and position of each element are approximate and must be viewed as such.

Important Information These particulars do not constitute an offer or contract in whole or part. The statements contained herein are made without responsibility on the part of Ashtons or the vendors and they cannot be relied upon as representatives of fact. In respect of floor plans, these are for illustrative purposes only. The measurement and position of each element is approximate and must be viewed as such. Intending purchasers should therefore satisfy themselves by inspection or otherwise as to their correctness. The vendors do not make or give, and neither Ashtons nor any person in their employment has any authority to make or give, any representation or warranty whatsoever in relation to this property. We offer a wide range of services through third party providers including solicitors, surveyors, removal firms, mortgage providers and EPC suppliers. We receive additional payments for administering suppliers quoting software and making referrals. You are not under any obligations to use these services and it is your discretion whether you choose to deal with these parties or your own preferred supplier. You should be aware the average payment we received in 2024 equated to £29.76 per referral.