



4 bedrooms



2 bathrooms



2 receptions



EPC Band C

Council Tax Band:  
F £0.00 ()





Lovely detached family home in quiet cul-de-sac, popular Cross Farm area, backing onto park. Rent includes garden maintenance.

### Description

This beautifully extended family home offers exceptional living space, perfect for modern living. The spacious main reception room features elegant oak flooring and patio doors that open to a meticulously maintained garden, providing ample space for both a cozy sitting area and a separate dining or play area. The contemporary kitchen is fully equipped with a dishwasher, washer-dryer, and fridge-freezer. Additionally, there is a second reception room, currently used as a dining room, along with a convenient cloakroom. Upstairs, the master bedroom boasts an en-suite shower room. There are two additional double bedrooms, a single bedroom, and a family bathroom. The property also includes ample parking, a garage at the front, and a charming rear garden. Council Tax Band F.

### Location

Parva Close in Southdown, Harpenden, is near The Grove primary school. Parva Park is at the rear, with local shops in Southdown. Harpenden town centre is around 1.5 miles away.

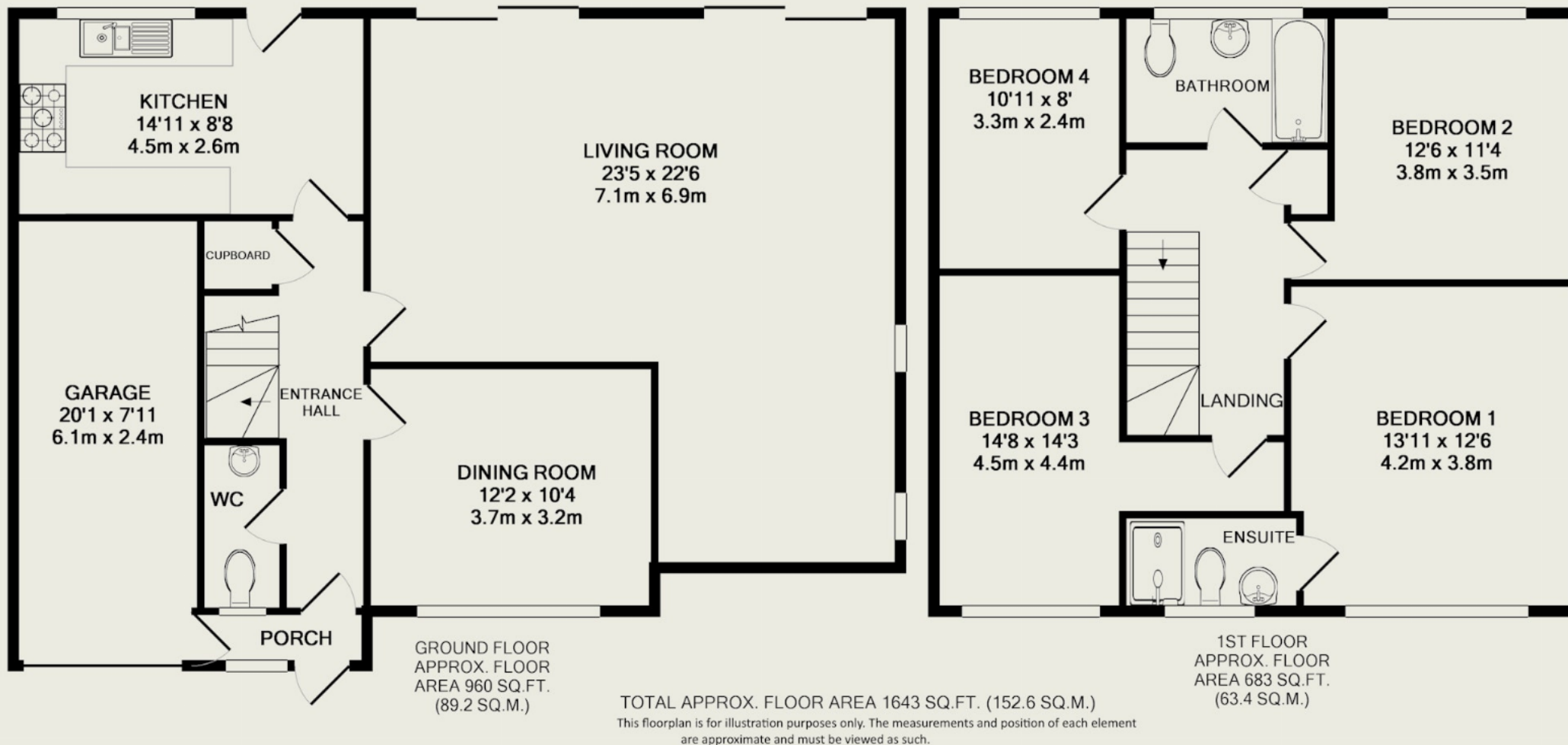












**Important Information** These particulars do not constitute an offer or contract in whole or part. The statements contained herein are made without responsibility on the part of Ashtons or the vendors and they cannot be relied upon as representatives of fact. In respect of floor plans, these are for illustrative purposes only. The measurement and position of each element is approximate and must be viewed as such. Intending purchasers should therefore satisfy themselves by inspection or otherwise as to their correctness. The vendors do not make or give, and neither Ashtons nor any person in their employment has any authority to make or give, any representation or warranty whatsoever in relation to this property. We offer a wide range of services through third party providers including solicitors, surveyors, removal firms, mortgage providers and EPC suppliers. We receive additional payments for administering suppliers quoting software and making referrals. You are not under any obligations to use these services and it is your discretion whether you choose to deal with these parties or your own preferred supplier. You should be aware the average payment we received in 2024 equated to £29.76 per referral.