



2 bedrooms



1 bathroom



1 reception



EPC Band C

Council Tax Band:
D £0.00 ()



Pretty 2-bedroom end-terrace home with garden, in quiet residential location.

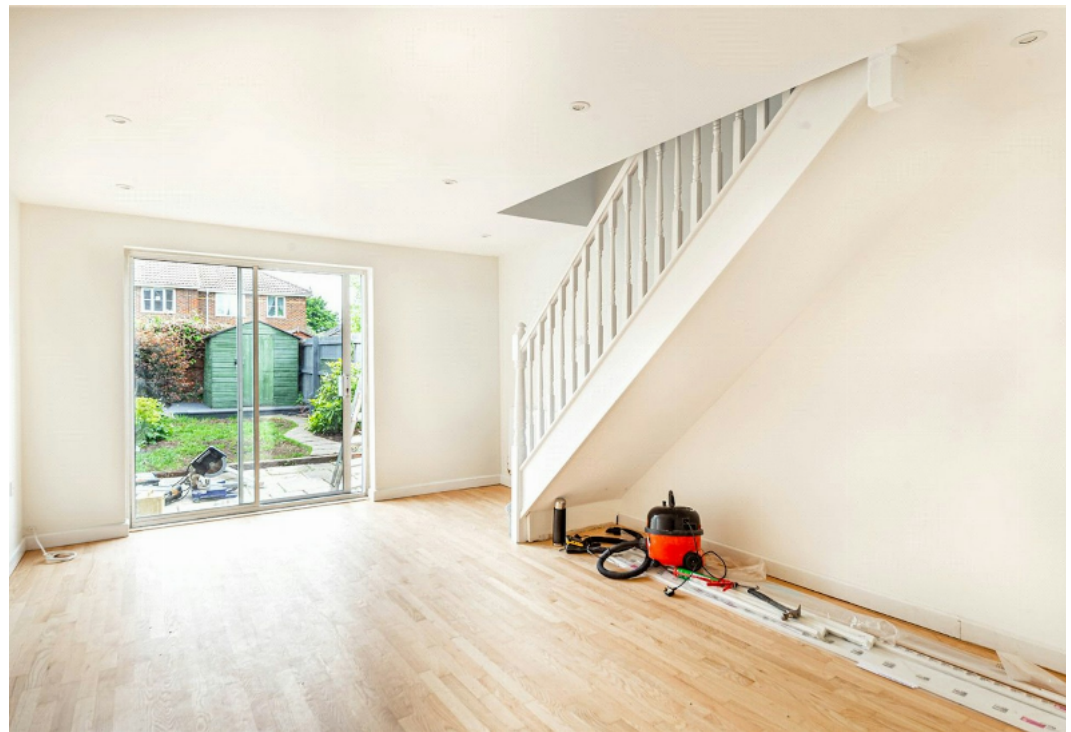
Description

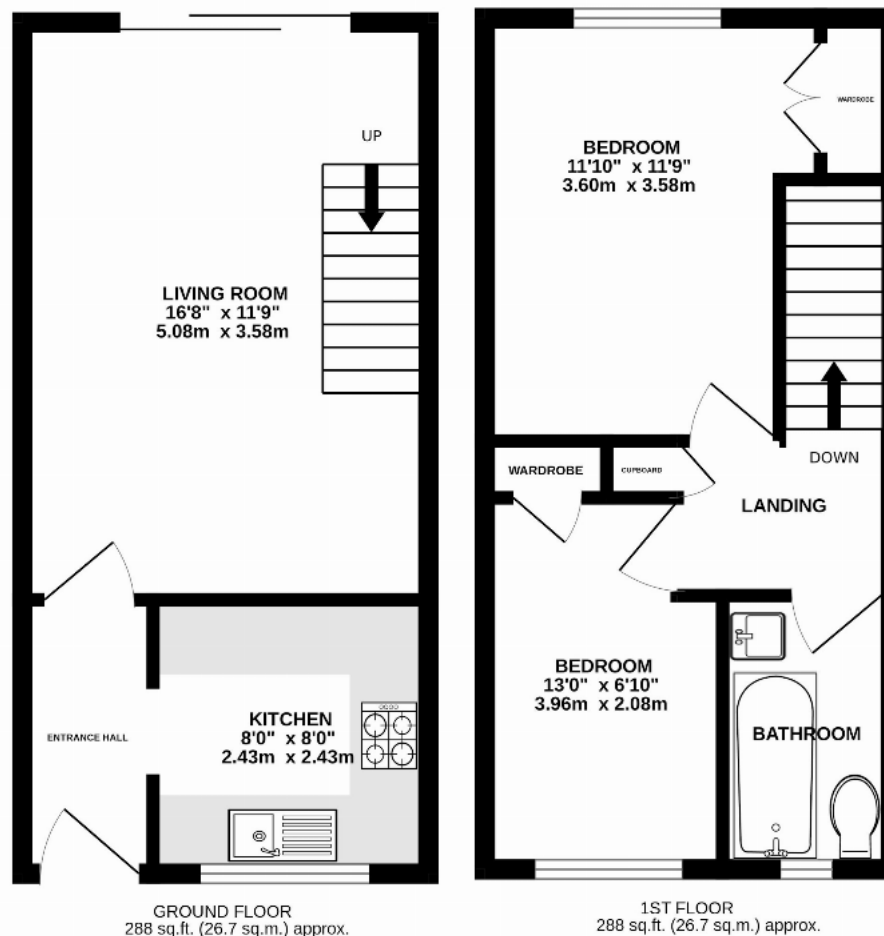
A well-presented two-bedroom end-of-terrace house, situated in a quiet and attractive residential area. Recently renovated, the property offers modern, neutral interiors and a comfortable layout ideal for professionals, couples, or small families. The ground floor includes a newly fitted kitchen with integrated appliances and a bright, spacious living room with patio doors leading out to a private garden with a shed. Upstairs are two good-sized bedrooms and a modern bathroom with a bath and overhead shower. There are two allocated parking spaces.

Location

Brooke End is in a prestigious development of large detached homes near Redbourn Common. Close to St Albans & Harpenden for shopping & London rail links. M1 motorway and Luton Airport are easily accessible.







TOTAL FLOOR AREA : 576 sq.ft. (53.5 sq.m.) approx.

This floorplan is for illustration purposes only. The measurements and position of each element are approximate and must be viewed as such.

Important Information These particulars do not constitute an offer or contract in whole or part. The statements contained herein are made without responsibility on the part of Ashtons or the vendors and they cannot be relied upon as representatives of fact. In respect of floor plans, these are for illustrative purposes only. The measurement and position of each element is approximate and must be viewed as such. Intending purchasers should therefore satisfy themselves by inspection or otherwise as to their correctness. The vendors do not make or give, and neither Ashtons nor any person in their employment has any authority to make or give, any representation or warranty whatsoever in relation to this property. We offer a wide range of services through third party providers including solicitors, surveyors, removal firms, mortgage providers and EPC suppliers. We receive additional payments for administering suppliers quoting software and making referrals. You are not under any obligations to use these services and it is your discretion whether you choose to deal with these parties or your own preferred supplier. You should be aware the average payment we received in 2024 equated to £29.76 per referral.