 2 Bedrooms

 2 Bathrooms

 1 Reception

 EPC Band C

Council Tax Band:
D £2,458.18 (2026/2027)



 **ashtons**
for life's great moves

Stephens Court, Harpenden, Hertfordshire, AL5 4FE
£1,850 PCM

A beautifully furnished apartment in a popular development with balcony, within walking distance of the town and mainline station.

Description

This beautifully finished apartment has been lovingly maintained and thoughtfully modernised throughout. Situated on the top floor, the property is filled with natural light and has been tastefully redecorated. It features an open-plan lounge, kitchen, and dining area, with the kitchen offering integrated appliances and high-quality finishes. The lounge is furnished with stylish pieces and benefits from double doors leading out to a balcony. There are two well-proportioned, bright, and contemporary bedrooms, both complete with quality furniture and fitted wardrobes. The principal bedroom includes a tiled en suite with a shower cubicle, while the additional bathroom has been recently updated and features a bath with an overhead shower. The apartment is offered fully furnished, has a newly fitted boiler and also has excellent storage throughout. Further benefits include lift access within the development, well-maintained communal gardens, and secure gated parking with one allocated space.

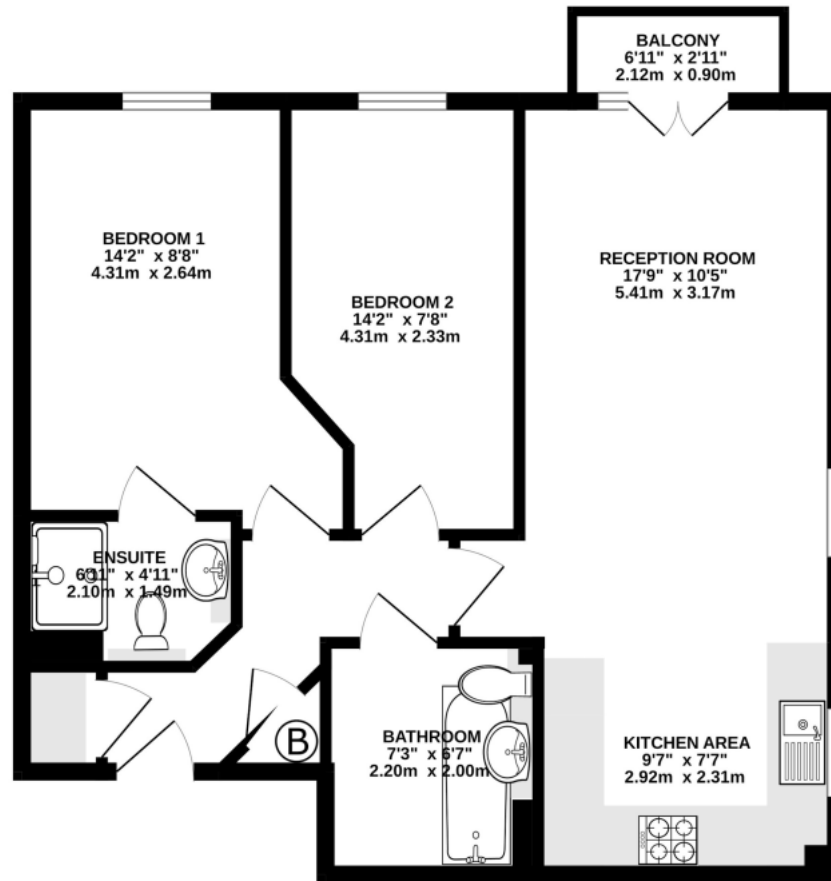
Location

Stephens Court offers a charming setting adjacent to the Lea Valley nature reserve and close to a range of shops and pubs. Harpenden town centre and station are approximately one mile away presenting direct access to St Pancras International









TOTAL FLOOR AREA : 640 sq.ft. (59.4 sq.m.) approx.

This floorplan is for illustration purposes only. The measurements and position of each element are approximate and must be viewed as such.

Important Information These particulars do not constitute an offer or contract in whole or part. The statements contained herein are made without responsibility on the part of Ashtons or the vendors and they cannot be relied upon as representatives of fact. In respect of floor plans, these are for illustrative purposes only. The measurement and position of each element is approximate and must be viewed as such. Intending purchasers should therefore satisfy themselves by inspection or otherwise as to their correctness. The vendors do not make or give, and neither Ashtons nor any person in their employment has any authority to make or give, any representation or warranty whatsoever in relation to this property. We offer a wide range of services through third party providers including solicitors, surveyors, removal firms, mortgage providers and EPC suppliers. We receive additional payments for administering suppliers quoting software and making referrals. You are not under any obligations to use these services and it is your discretion whether you choose to deal with these parties or your own preferred supplier. You should be aware the average payment we received in 2024 equated to £29.76 per referral.