 2 Bedrooms

 1 Bathroom

 1 Reception

 EPC Band B

Council Tax Band:
D £0.00 ()



Furnished first floor apartment, well-presented, moments from Harpenden station and town centre.

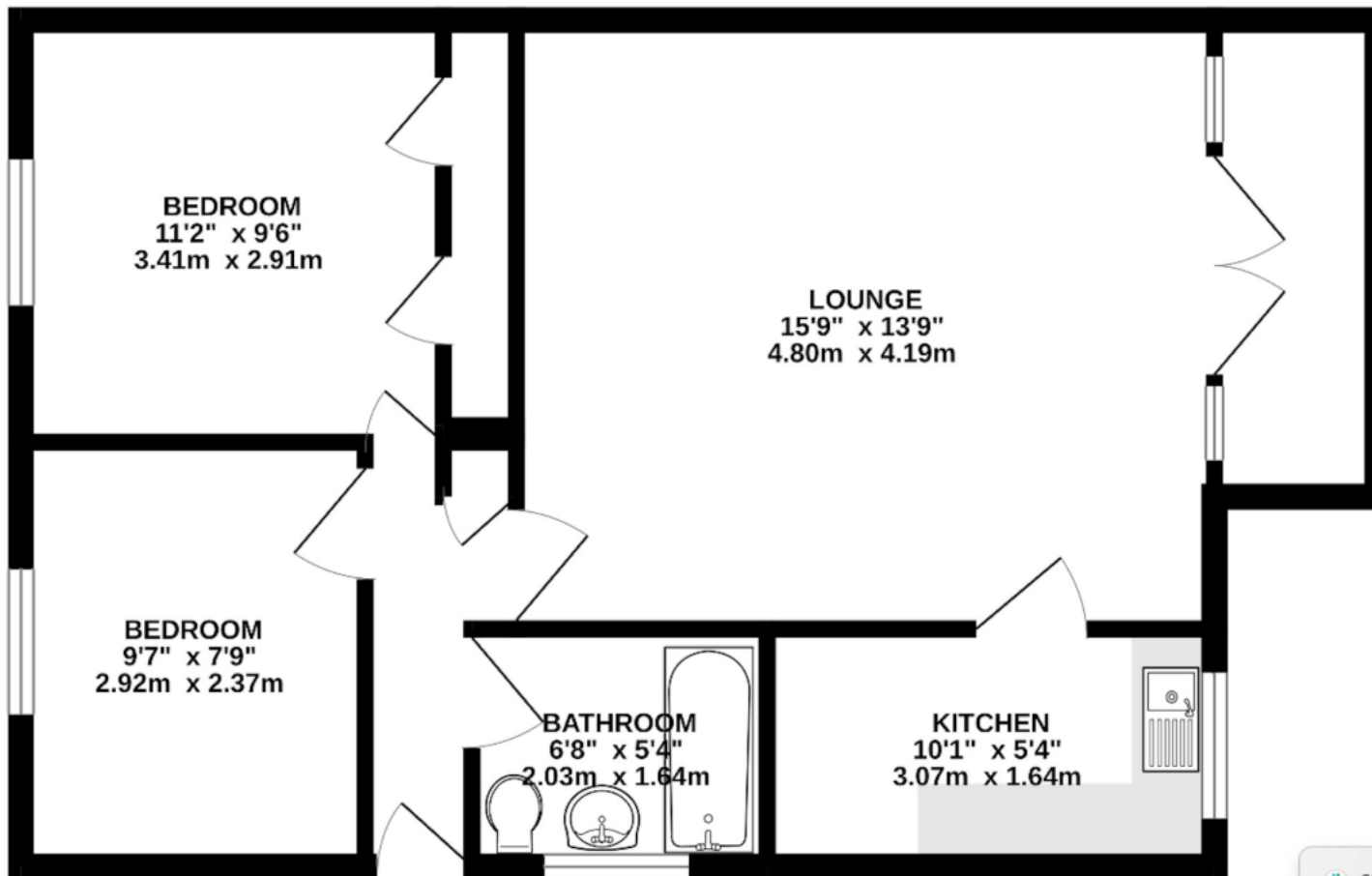
Description

This bright and airy two-bedroom apartment has been recently renovated. The spacious reception room, filled with natural light, opens onto a private balcony and flows into a newly fitted kitchen with modern integrated appliances and ample storage. The main bedroom features built-in wardrobes, complemented by a well-proportioned second bedroom. A newly fitted bathroom includes a shower cubicle and vanity unit. The property is offered furnished, with residents parking and a garage for additional storage.



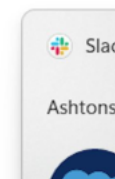






TOTAL FLOOR AREA : 554 sq.ft. (51.5 sq.m.) approx.

This floorplan is for illustration purposes only. The measurements and position of each element are approximate and must be viewed as such.



Important Information These particulars do not constitute an offer or contract in whole or part. The statements contained herein are made without responsibility on the part of Ashtons or the vendors and they cannot be relied upon as representatives of fact. In respect of floor plans, these are for illustrative purposes only. The measurement and position of each element is approximate and must be viewed as such. Intending purchasers should therefore satisfy themselves by inspection or otherwise as to their correctness. The vendors do not make or give, and neither Ashtons nor any person in their employment has any authority to make or give, any representation or warranty whatsoever in relation to this property. We offer a wide range of services through third party providers including solicitors, surveyors, removal firms, mortgage providers and EPC suppliers. We receive additional payments for administering suppliers quoting software and making referrals. You are not under any obligations to use these services and it is your discretion whether you choose to deal with these parties or your own preferred supplier. You should be aware the average payment we received in 2024 equated to £29.76 per referral.