 2 Bedrooms

 1 Bathroom

 1 Reception

 EPC Band C

Council Tax Band:
C £0.00 ()



2-bed apt in new build with en suite, private garden & 2 parking spaces.

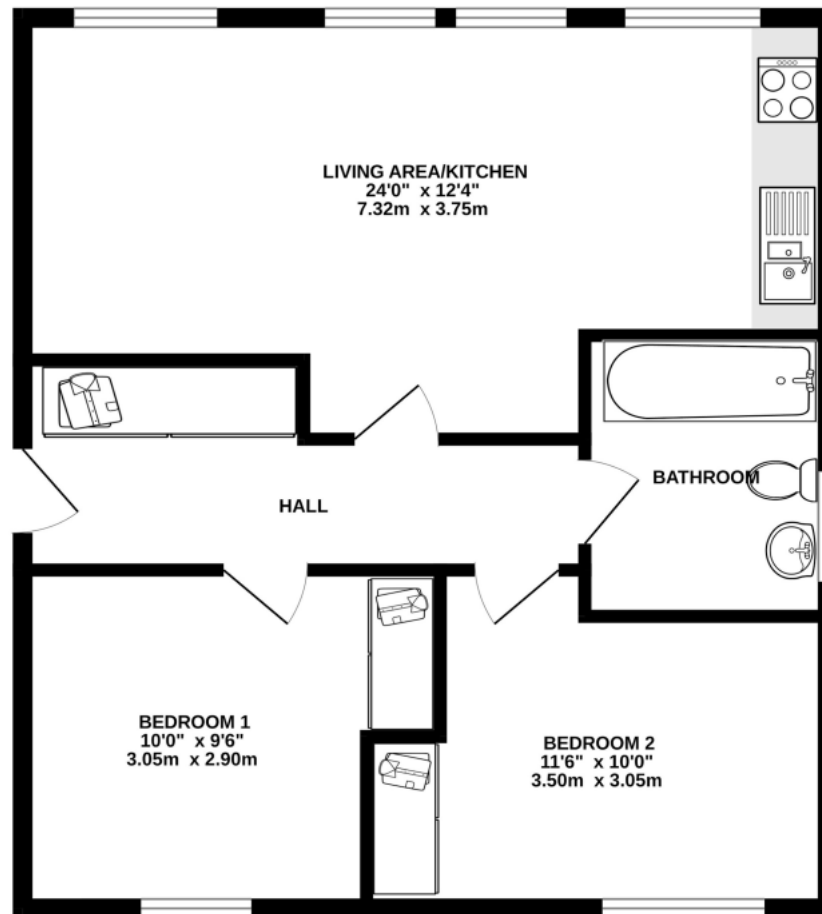
Description

Originally built by Jarvis of Harpenden, No. 1 Marlborough Park has been converted into six luxury apartments. This two double bedroom ground floor apartment offers contemporary living with high-quality finishes throughout. Neutrally decorated and flooded with natural light, the unfurnished apartment boasts a bright and spacious open-plan living/kitchen area with integrated appliances and modern finishes. Both bedrooms are airy with built-in wardrobes, and the main bathroom features a large shower cubicle. A standout feature is its private terraced garden with side access and low-maintenance faux grass, perfect for relaxing or entertaining. The apartment includes USB charging ports and the infrastructure for ultra-fast internet speeds, depending on the provider. Externally, the property offers two allocated parking spaces with one EV charging point.









TOTAL FLOOR AREA : 636 sq.ft. (59.1 sq.m.) approx.

This floorplan is for illustration purposes only. The measurements and position of each element are approximate and must be viewed as such.

Important Information These particulars do not constitute an offer or contract in whole or part. The statements contained herein are made without responsibility on the part of Ashtons or the vendors and they cannot be relied upon as representatives of fact. In respect of floor plans, these are for illustrative purposes only. The measurement and position of each element is approximate and must be viewed as such. Intending purchasers should therefore satisfy themselves by inspection or otherwise as to their correctness. The vendors do not make or give, and neither Ashtons nor any person in their employment has any authority to make or give, any representation or warranty whatsoever in relation to this property. We offer a wide range of services through third party providers including solicitors, surveyors, removal firms, mortgage providers and EPC suppliers. We receive additional payments for administering suppliers quoting software and making referrals. You are not under any obligations to use these services and it is your discretion whether you choose to deal with these parties or your own preferred supplier. You should be aware the average payment we received in 2024 equated to £29.76 per referral.