





-  2 Bedrooms
-  2 Bathrooms
-  2 Receptions
-  EPC Band B

Council Tax Band:
C £2,082.29 ()



Modern 2-bed apartment with 2 bathrooms & allocated parking.

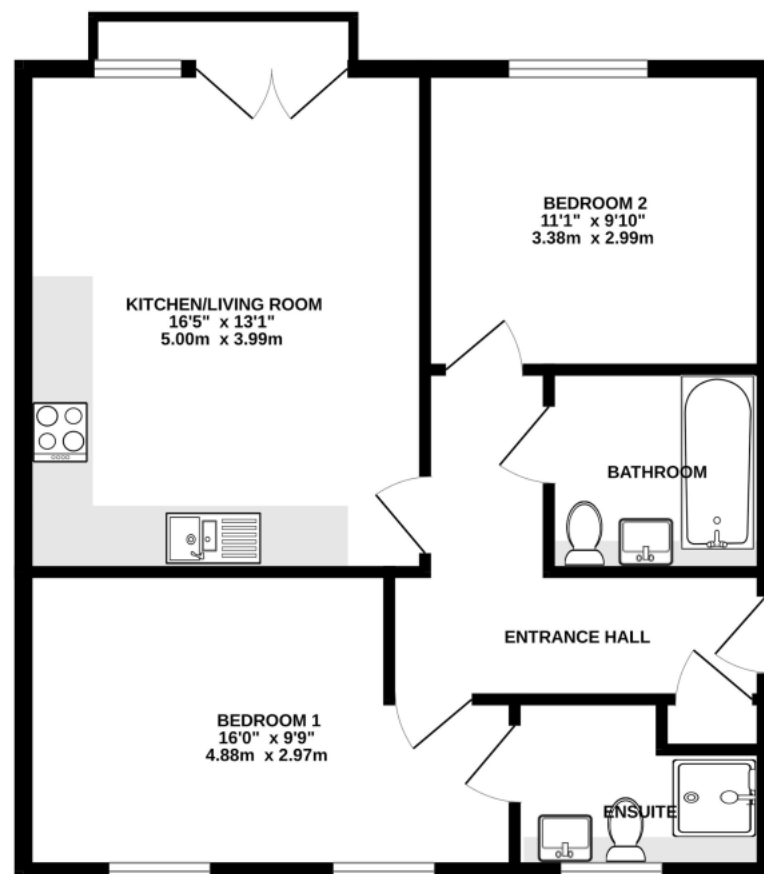
Description

Second floor apartment in a recently built development, close to Harpenden town and mainline Station. Features include an open-plan kitchen and living area with a floor-to-ceiling window overlooking the grounds. The accommodation comprises a principal bedroom with an en suite shower room, a second double bedroom, and a stylish tiled bathroom accessed from the hallway. The property offers an allocated parking space and additional spaces for visitors. It is bright and spacious throughout, with lovely views of the grounds and the River Lea. Situated in a private development on the fringes of Harpenden, it is a short walk to a small selection of shops including the Co-Op, and a 20-minute walk to Harpenden mainline Station and town centre.









TOTAL FLOOR AREA : 651 sq.ft. (60.5 sq.m.) approx.

This floorplan is for illustration purposes only. The measurements and position of each element are approximate and must be viewed as such.

Important Information These particulars do not constitute an offer or contract in whole or part. The statements contained herein are made without responsibility on the part of Ashtons or the vendors and they cannot be relied upon as representatives of fact. In respect of floor plans, these are for illustrative purposes only. The measurement and position of each element is approximate and must be viewed as such. Intending purchasers should therefore satisfy themselves by inspection or otherwise as to their correctness. The vendors do not make or give, and neither Ashtons nor any person in their employment has any authority to make or give, any representation or warranty whatsoever in relation to this property. We offer a wide range of services through third party providers including solicitors, surveyors, removal firms, mortgage providers and EPC suppliers. We receive additional payments for administering suppliers quoting software and making referrals. You are not under any obligations to use these services and it is your discretion whether you choose to deal with these parties or your own preferred supplier. You should be aware the average payment we received in 2024 equated to £29.76 per referral.