

 2 Bedrooms

 1 Bathroom

 1 Reception

 EPC Band C

Council Tax Band:
D £0.00 ()



2-bed ground floor maisonette 0.3 miles from Harpenden Station, with private balcony, communal gardens, and allocated parking space.

Description

A recently renovated two-bedroom ground floor maisonette with a private entrance. The property offers a bright and spacious open plan living and dining area with direct access to a private balcony overlooking the peaceful communal garden. The modern kitchen features integrated appliances and ample worktop space. There is a generously sized double bedroom at the front, a rear-facing single bedroom, and a modern bathroom fitted with a bath and overhead shower. Externally, the property benefits from one allocated parking space and visitor bays.

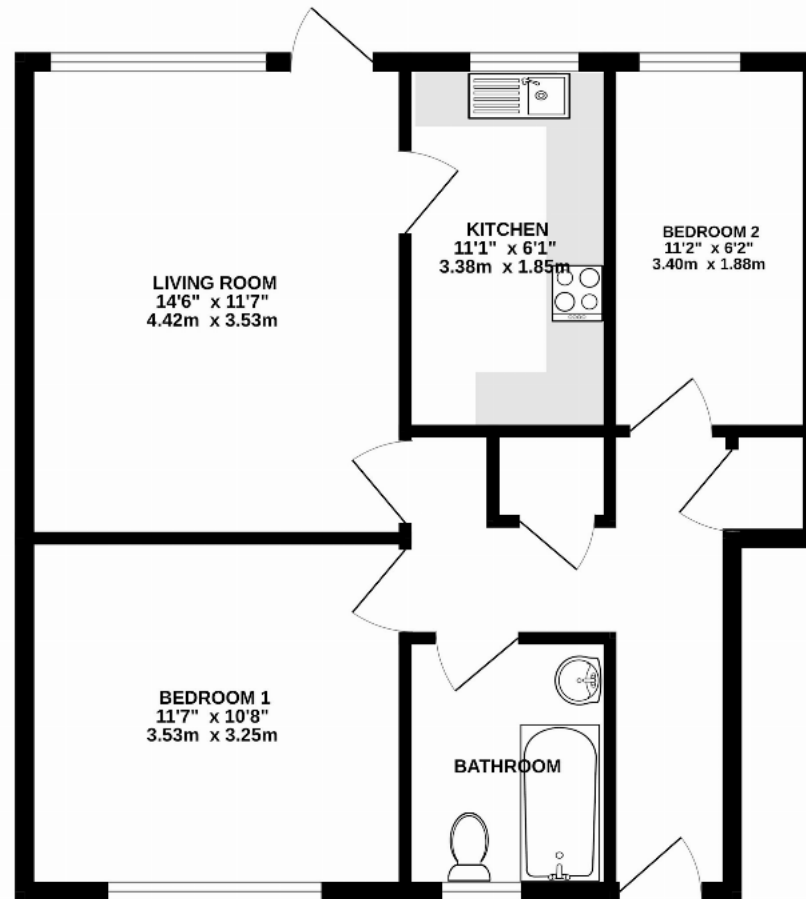
Location

Copper Beeches is located on Milton Road, near Harpenden town centre, offering a variety of pubs, shops, and restaurants. The mainline station is just 0.3 miles away, providing quick access to central London in about 30 minutes.









TOTAL FLOOR AREA : 595 sq.ft. (55.3 sq.m.) approx.

This floorplan is for illustration purposes only. The measurements and position of each element are approximate and must be viewed as such.

Important Information These particulars do not constitute an offer or contract in whole or part. The statements contained herein are made without responsibility on the part of Ashtons or the vendors and they cannot be relied upon as representatives of fact. In respect of floor plans, these are for illustrative purposes only. The measurement and position of each element is approximate and must be viewed as such. Intending purchasers should therefore satisfy themselves by inspection or otherwise as to their correctness. The vendors do not make or give, and neither Ashtons nor any person in their employment has any authority to make or give, any representation or warranty whatsoever in relation to this property. We offer a wide range of services through third party providers including solicitors, surveyors, removal firms, mortgage providers and EPC suppliers. We receive additional payments for administering suppliers quoting software and making referrals. You are not under any obligations to use these services and it is your discretion whether you choose to deal with these parties or your own preferred supplier. You should be aware the average payment we received in 2024 equated to £29.76 per referral.