



4 Bedrooms



2 Bathrooms



2 Receptions

Council Tax Band:
A £0.00 ()

 **ashtons**
for life's great moves

Grove Road, Harpenden, AL5 1HD
£3,500 PCM

Spacious 4-bed new build semi-detached home over 3 floors with garden & ample parking.

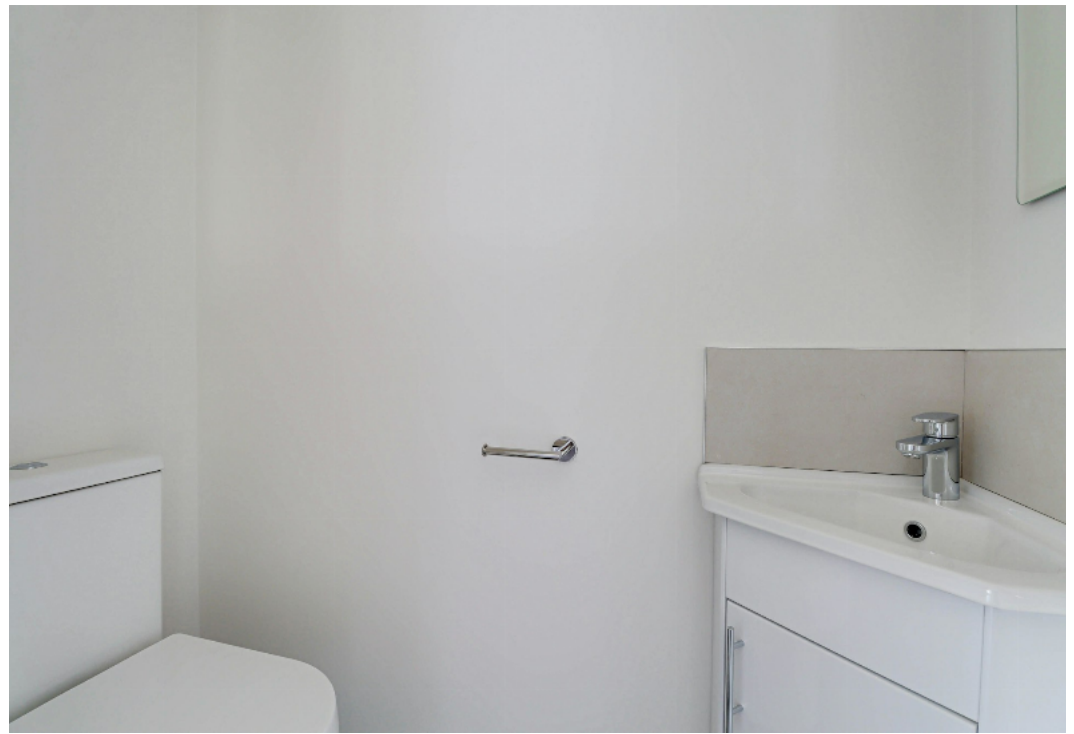
Description

Description This beautifully presented new build semi-detached property offers spacious, modern living over three floors. You are welcomed into a bright entrance hallway with stylish wooden flooring throughout the ground floor. At the front is a well-proportioned lounge, while the rear boasts a contemporary open-plan kitchen and dining area in neutral tones, complete with integrated appliances. French doors open onto a private garden with a paved patio, lawn, storage shed, and side access. The ground floor also features a utility room with washer/dryer, sink, and ample storage. The first floor, fully carpeted, consists of three generous bedrooms. The principal bedroom at the front includes fitted wardrobes and an en-suite shower room. The other two bedrooms are served by a stylish family bathroom. The spacious fourth bedroom occupies the top floor, enjoying light from Velux windows and a private cloakroom. The front of the property has a paved driveway for four cars. Additional features include an energy-efficient heat pump system. EPC pending. Council Tax Band TBC.

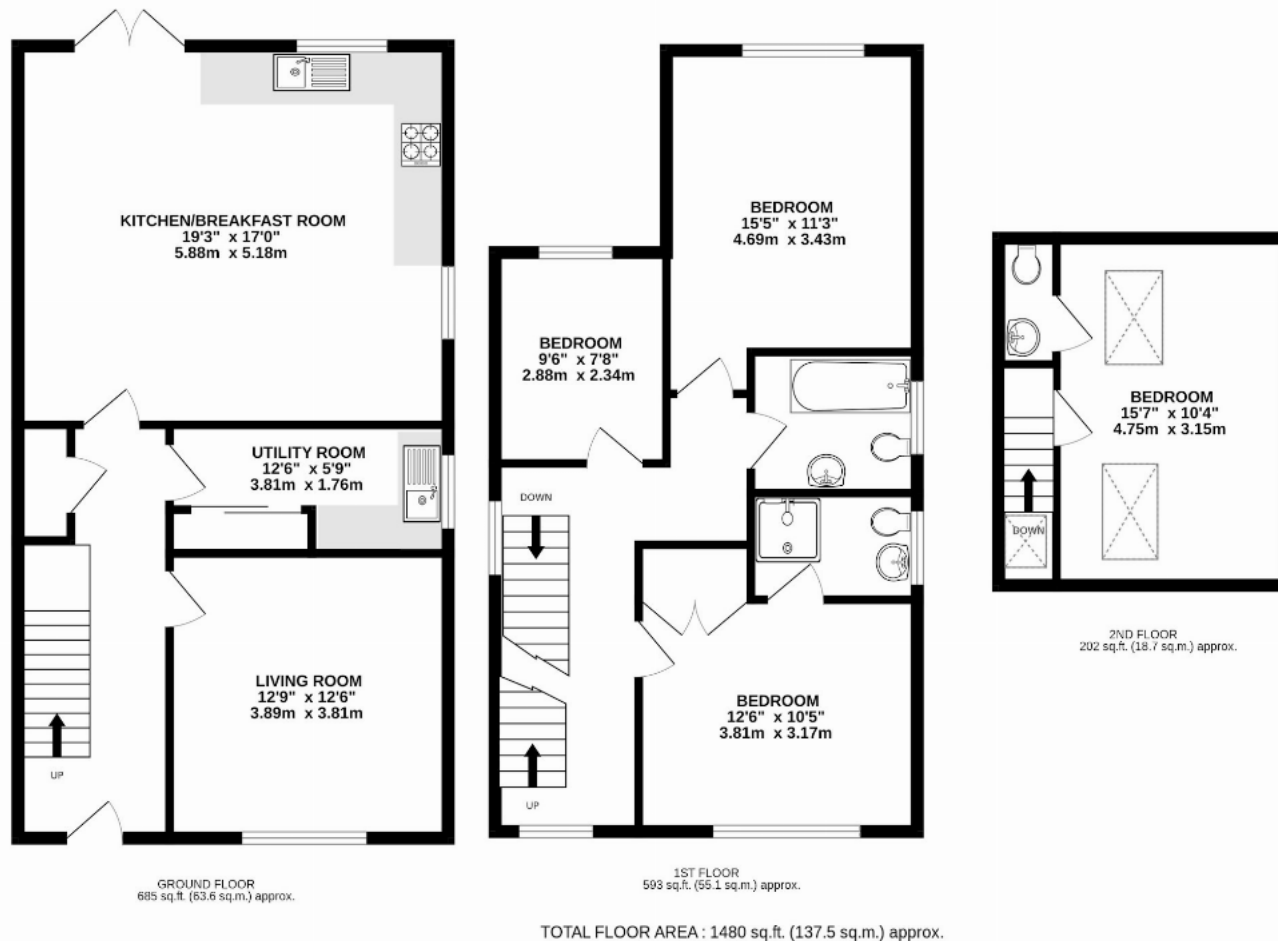
Location

Grove Road offers a lovely setting, a short walk to Southdown's shops and pubs and just over a mile from Harpenden Town centre and station. Grove School is nearby, and the property is ideal for enjoying some of Hertfordshire's finest walks.









This floorplan is for illustration purposes only. The measurements and position of each element are approximate and must be viewed as such.

Important Information These particulars do not constitute an offer or contract in whole or part. The statements contained herein are made without responsibility on the part of Ashtons or the vendors and they cannot be relied upon as representatives of fact. In respect of floor plans, these are for illustrative purposes only. The measurement and position of each element is approximate and must be viewed as such. Intending purchasers should therefore satisfy themselves by inspection or otherwise as to their correctness. The vendors do not make or give, and neither Ashtons nor any person in their employment has any authority to make or give, any representation or warranty whatsoever in relation to this property. We offer a wide range of services through third party providers including solicitors, surveyors, removal firms, mortgage providers and EPC suppliers. We receive additional payments for administering suppliers quoting software and making referrals. You are not under any obligations to use these services and it is your discretion whether you choose to deal with these parties or your own preferred supplier. You should be aware the average payment we received in 2024 equated to £29.76 per referral.