

 5 Bedrooms

 3 Bathrooms

 2 Receptions

Council Tax Band:  
E £0.00 ()



 **ashtons**  
for life's great moves

Topstreet Way, Harpenden, Hertfordshire, AL5 5TS  
£4,750 PCM

Beautifully renovated 3-floor home with open-plan kitchen, cosy 2nd reception room, home office/gym, off-street parking, luxury finishes; ideal family home.

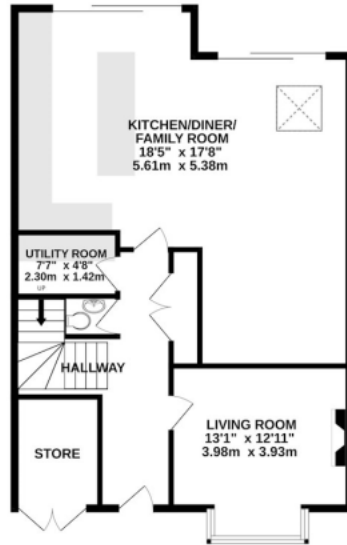
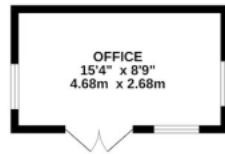
### Description

Set back from the street, this property welcomes you with a bright hallway leading into a beautifully designed open-plan kitchen and dining area. The kitchen features premium Siemens appliances, a wine cooler, a double fridge-freezer, generous counter space, and a sleek island. Velux windows and two sets of balcony doors flood the space with natural light, opening onto a paved patio with an overhead pergola and outdoor heaters, perfect for all seasons. Steps lead down to the lawn and a versatile air-conditioned home office/gym at the garden's rear. The second reception room offers a cosy space, complete with a gas fire and an integrated overhead projector. Additional ground-floor benefits include a cloakroom, a utility room with washer and dryer facilities, and ample storage. On the first floor, the principal bedroom boasts an en-suite wet room, accompanied by two further bedrooms and a luxurious family bathroom with a freestanding stone bath. The top floor comprises two additional bedrooms and a contemporary en-suite bathroom. This desirable home has been thoughtfully extended and renovated throughout, finished with window shutters and offered furnished.

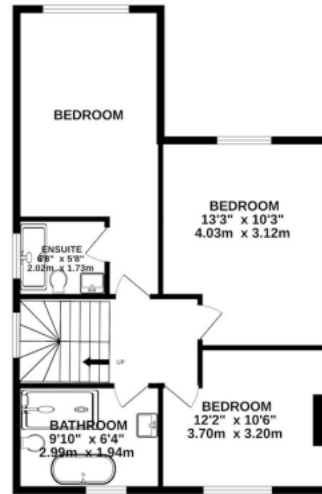




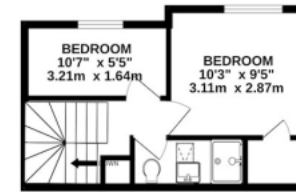




GROUND FLOOR  
1004 sq.ft. (93.3 sq.m.) approx.



1ST FLOOR  
682 sq.ft. (63.4 sq.m.) approx.



2ND FLOOR  
259 sq.ft. (24.0 sq.m.) approx.

TOTAL FLOOR AREA: 1945 sq.ft. (180.7 sq.m.) approx.

This floor plan is for illustrative purposes only. The measurement and position of each element is approximate and must be viewed as such

**Important Information** These particulars do not constitute an offer or contract in whole or part. The statements contained herein are made without responsibility on the part of Ashtons or the vendors and they cannot be relied upon as representatives of fact. In respect of floor plans, these are for illustrative purposes only. The measurement and position of each element is approximate and must be viewed as such. Intending purchasers should therefore satisfy themselves by inspection or otherwise as to their correctness. The vendors do not make or give, and neither Ashtons nor any person in their employment has any authority to make or give, any representation or warranty whatsoever in relation to this property. We offer a wide range of services through third party providers including solicitors, surveyors, removal firms, mortgage providers and EPC suppliers. We receive additional payments for administering suppliers quoting software and making referrals. You are not under any obligations to use these services and it is your discretion whether you choose to deal with these parties or your own preferred supplier. You should be aware the average payment we received in 2024 equated to £29.76 per referral.