



3 Bedrooms



2 Bathrooms



2 Receptions



Private Garden



On-Street Parking

Freehold

Council Tax Band:  
C £2,145.77 (2026/2027)

Local Authority:  
North Hertfordshire District Council

 **ashtons**  
for life's great moves

Ickleford Road, Hitchin, SG5 1TL  
Guide price of £600,000

Immaculate Victorian family home on sought-after road, a short walk from Hitchin station, town centre & top schools.

### Description

This beautifully renovated Victorian home seamlessly blends period charm with contemporary styling, its extensions and improvements creating a chic and practical family abode. Ideally located within easy reach of Hitchin's mainline railway station, town centre, and esteemed schools, it's perfect for modern family life. Entering the home, you're greeted by a bright, elegant living room boasting a charming bay window, bespoke shelving, and a feature fireplace, exuding warmth and character. The journey through the home reveals a useful cloakroom and utility area, leading to the stunning open-plan kitchen, dining, and family room. Spanning approximately 24ft, this area maximises natural light with a partly vaulted ceiling and bi-folding doors connecting seamlessly to the garden. The first floor comprises two well-sized double bedrooms and a contemporary four-piece family bathroom. The entire second floor is devoted to the principal bedroom suite with a modern en-suite shower room. Outside, a low-maintenance front garden with a block-paved pathway and attractive planting welcomes you. The rear garden features a generous patio for dining and a lawn framed by mature shrubs and trees. This Victorian gem offers spacious, stylish accommodation in a convenient location, embodying modern living at its best.

### Location

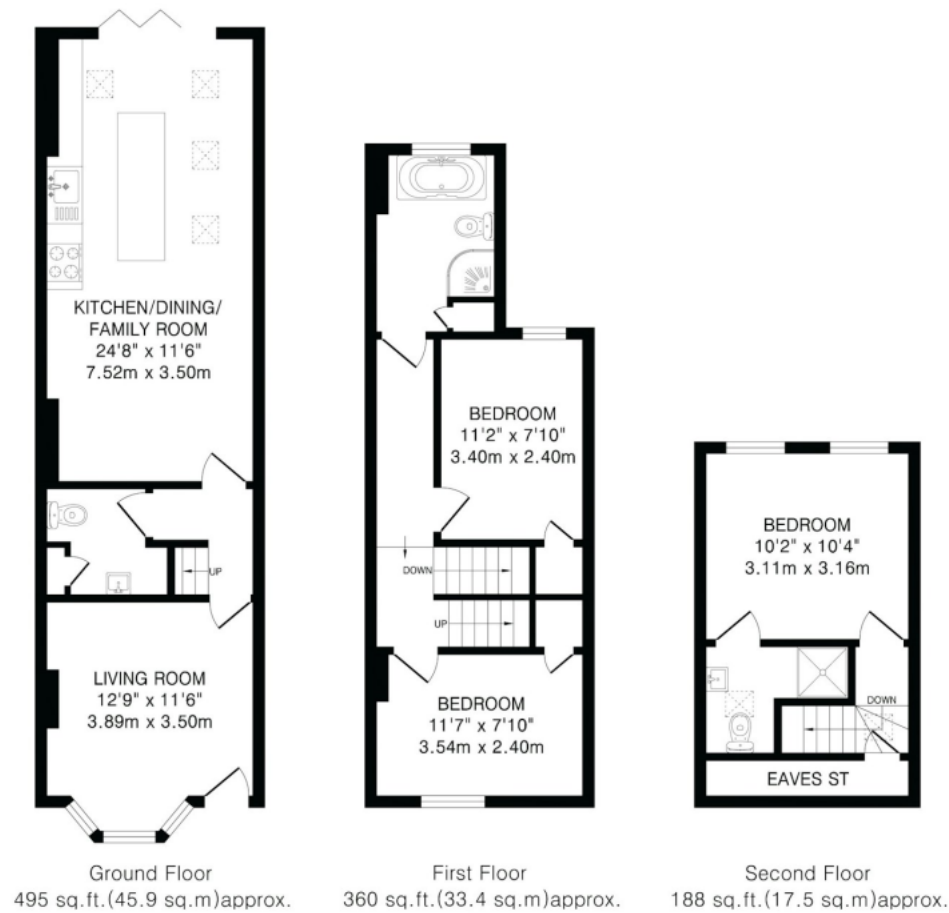
Ickleford Road is a sought-after address in the popular SG5 1 area of Hitchin, noted for attractive homes and easy access to the town centre, mainline station, local amenities, and excellent schools.

In compliance with the UK's Anti Money Laundering (AML) regulations, we are required to confirm the identity of all prospective buyers at the point of an offer being accepted and use a third party, Identity Verification System to do so. There is a nominal charge of £48 (per person) including VAT for this service. For more information, please refer to the terms and conditions section of our website.









TOTAL FLOOR AREA: 1043 sq.ft. (96.8 sq.m) approx.

This floorplan is for illustration purposes only. The measurements and position of each element are approximate and must be viewed as such.

**Important Information** These particulars do not constitute an offer or contract in whole or part. The statements contained herein are made without responsibility on the part of Ashtons or the vendors and they cannot be relied upon as representatives of fact. In respect of floor plans, these are for illustrative purposes only. The measurement and position of each element is approximate and must be viewed as such. Intending purchasers should therefore satisfy themselves by inspection or otherwise as to their correctness. The vendors do not make or give, and neither Ashtons nor any person in their employment has any authority to make or give, any representation or warranty whatsoever in relation to this property. We offer a wide range of services through third party providers including solicitors, surveyors, removal firms, mortgage providers and EPC suppliers. We receive additional payments for administering suppliers quoting software and making referrals. You are not under any obligations to use these services and it is your discretion whether you choose to deal with these parties or your own preferred supplier. You should be aware the average payment we received in 2024 equated to £29.76 per referral.