 4 Bedrooms

 3 Bathrooms

 2 Receptions

 Private Garden

 Driveway

 EPC Band C

Freehold

Council Tax Band:
E £2,950.42 (2026/2027)

Local Authority:
North Hertfordshire District Council.



 **ashtons**
for life's great moves

Cranborne Avenue, Hitchin, SG5 2BS
Guide price of £1,000,000

A stunning unique 4-bed detached family home in a quiet, sought-after west-side cul-de-sac, offering modern living and far-reaching countryside views.

Description

The current owners have extended and modernised this impressive home, creating a spacious, light-filled property ready for immediate occupancy. It offers contemporary open-plan living and is located on the sought-after west side of Hitchin, known for its excellent school catchment, town centre access, and proximity to countryside. The welcoming entrance hall leads to a generous living room with high ceilings and a wood-burning stove. At the rear is a stunning open-plan kitchen, dining, and family room with skylight and bi-folding doors opening onto the patio. The kitchen features integrated appliances. Off this area are a utility room, shower room with W.C., and a versatile study. Upstairs are four double bedrooms; three served by a family bathroom, while the principal bedroom has an en-suite shower room. Outside, the front has a block-paved driveway for several vehicles, a lawned garden, and a wooden shed. The rear garden offers a patio, artificial lawn, and home office/studio with its own patio.

Location

Cranborne Avenue is a peaceful cul-de-sac in southwest Hitchin, known for easy town centre access, local amenities, and excellent school catchments. It offers a friendly community with a mix of residents and is near scenic countryside walks.

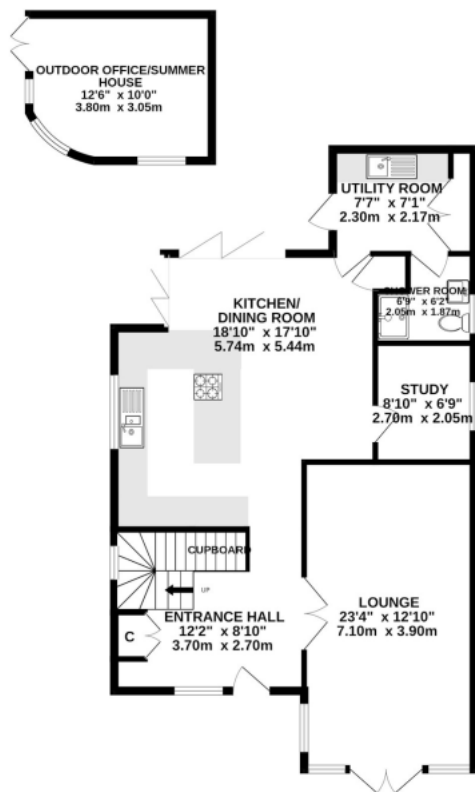


In compliance with the UK's Anti Money Laundering (AML) regulations, we are required to confirm the identity of all prospective buyers at the point of an offer being accepted and use a third party, Identity Verification System to do so. There is a nominal charge of £48 (per person) including VAT for this service. For more information, please refer to the terms and conditions section of our website.

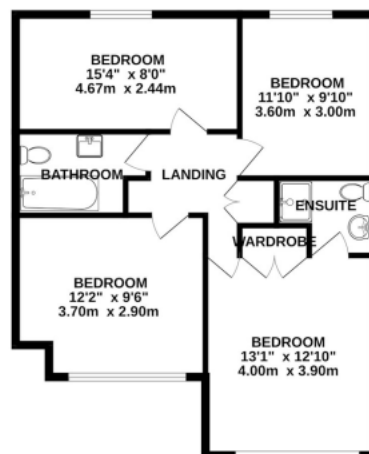




GROUND FLOOR



FIRST FLOOR



Made with Metropix ©2026

Important Information These particulars do not constitute an offer or contract in whole or part. The statements contained herein are made without responsibility on the part of Ashtons or the vendors and they cannot be relied upon as representatives of fact. In respect of floor plans, these are for illustrative purposes only. The measurement and position of each element is approximate and must be viewed as such. Intending purchasers should therefore satisfy themselves by inspection or otherwise as to their correctness. The vendors do not make or give, and neither Ashtons nor any person in their employment has any authority to make or give, any representation or warranty whatsoever in relation to this property. We offer a wide range of services through third party providers including solicitors, surveyors, removal firms, mortgage providers and EPC suppliers. We receive additional payments for administering suppliers quoting software and making referrals. You are not under any obligations to use these services and it is your discretion whether you choose to deal with these parties or your own preferred supplier. You should be aware the average payment we received in 2024 equated to £29.76 per referral.