

 3 Bedrooms

 2 Bathrooms

 2 Receptions

 EPC Band C

Freehold

Council Tax Band:  
D £2,368.74 (25/26)

Local Authority:  
North Herts District Council





Situated in a quiet cul-de-sac in the sought-after village of Offley, this well-presented three-bedroom semi-detached family home offers modern, spacious accommodation ideal for family living.

### Description

This wonderful three double bedroom semi-detached home is nestled within a quiet cul-de-sac in the ever-popular village of Offley, near Hitchin. Thoughtfully maintained by the current owners, the property offers spacious and versatile accommodation, ideal for modern family living. A generous entrance hall leads to a separate dining room with bespoke fitted cupboards and French doors onto the rear garden. This space could also serve as a family room or playroom. The modern kitchen provides access to a rear storage/workshop area with space for a washing machine and tumble dryer. The sitting room is generously sized, with bespoke alcove storage and a wood-burning stove. Upstairs, there are three well-proportioned bedrooms, all serviced by a family bathroom. The principal bedroom benefits from space for wardrobes and an en-suite shower room. Externally, the front offers a block-paved driveway with off-road parking for multiple vehicles. The rear garden is mainly lawned with a patio and established trees and shrubs. Solar panels enhance energy efficiency.

### Location

Great Offley is a charming historic village in North Hertfordshire, located about 3.5 miles southwest of Hitchin. It boasts picturesque open countryside surroundings while offering convenient access to London and the North.

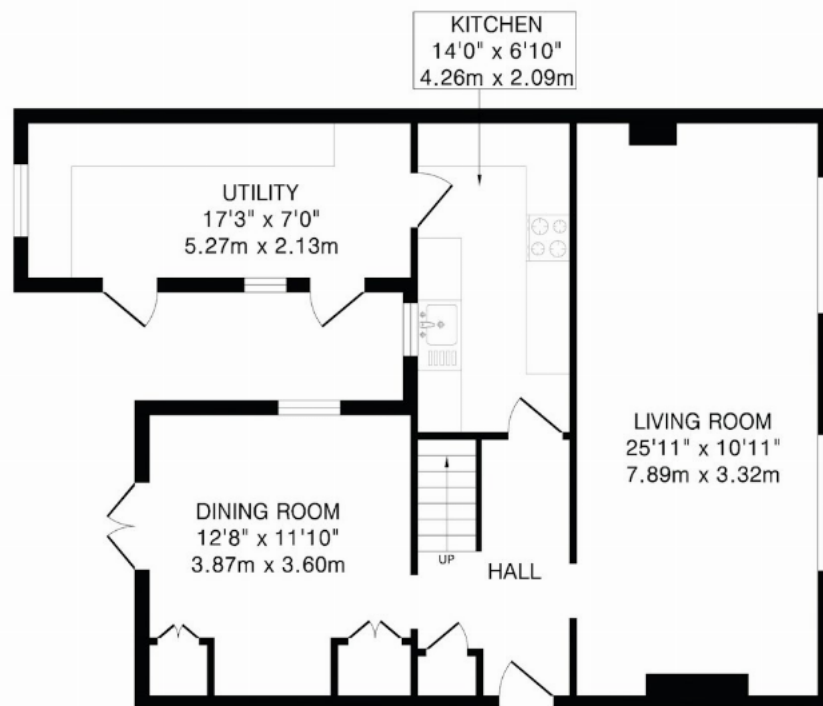




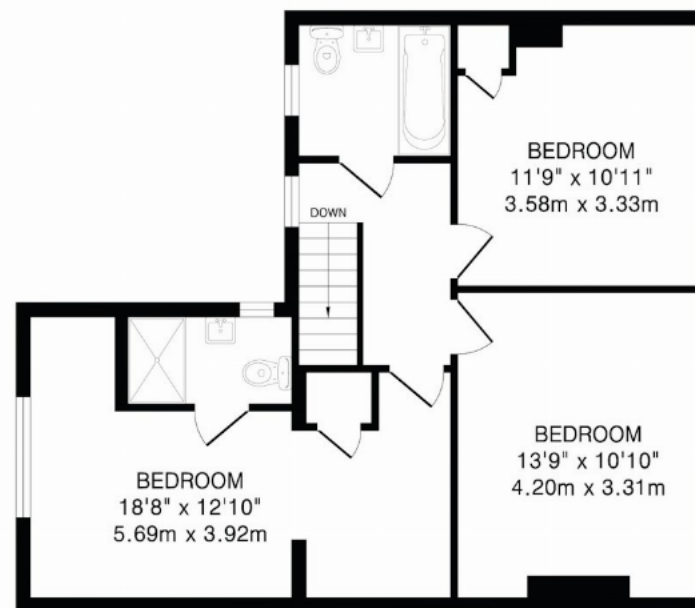








Ground Floor  
745 sq.ft.(69.2 sq.m)approx.



First Floor  
622 sq.ft.(58.7 sq.m)approx.

**TOTAL FLOOR AREA: 1367 sq.ft.(127.9 sq.m)approx.**

This floorplan is for illustration purposes only. The measurements and position of each element are approximate and must be viewed as such.

**Important Information** These particulars do not constitute an offer or contract in whole or part. The statements contained herein are made without responsibility on the part of Ashtons or the vendors and they cannot be relied upon as representatives of fact. In respect of floor plans, these are for illustrative purposes only. The measurement and position of each element is approximate and must be viewed as such. Intending purchasers should therefore satisfy themselves by inspection or otherwise as to their correctness. The vendors do not make or give, and neither Ashtons nor any person in their employment has any authority to make or give, any representation or warranty whatsoever in relation to this property. We offer a wide range of services through third party providers including solicitors, surveyors, removal firms, mortgage providers and EPC suppliers. We receive additional payments for administering suppliers quoting software and making referrals. You are not under any obligations to use these services and it is your discretion whether you choose to deal with these parties or your own preferred supplier. You should be aware the average payment we received in 2024 equated to £29.76 per referral.