



3 Bedrooms



2 Bathrooms



2 Receptions



EPC Band D

Council Tax Band:
D £0.00 ()

Charming 3-bed cottage with stunning countryside views, outbuildings, ample parking, & large SW-facing private garden.

Description

This characterful home occupies a fabulous position with stunning views over the rolling Hertfordshire countryside. Charming three-bedroom country cottage located on the edge of farmland on a private road, just off the Luton Road. The well-maintained accommodation features a modern fitted kitchen, two reception rooms, utility room with WC, three bedrooms and modern bathroom. There are also two useful brick-built outbuildings, a large southwest-facing private garden and ample parking for several vehicles. Available for a short-term tenancy of 6-9 months.

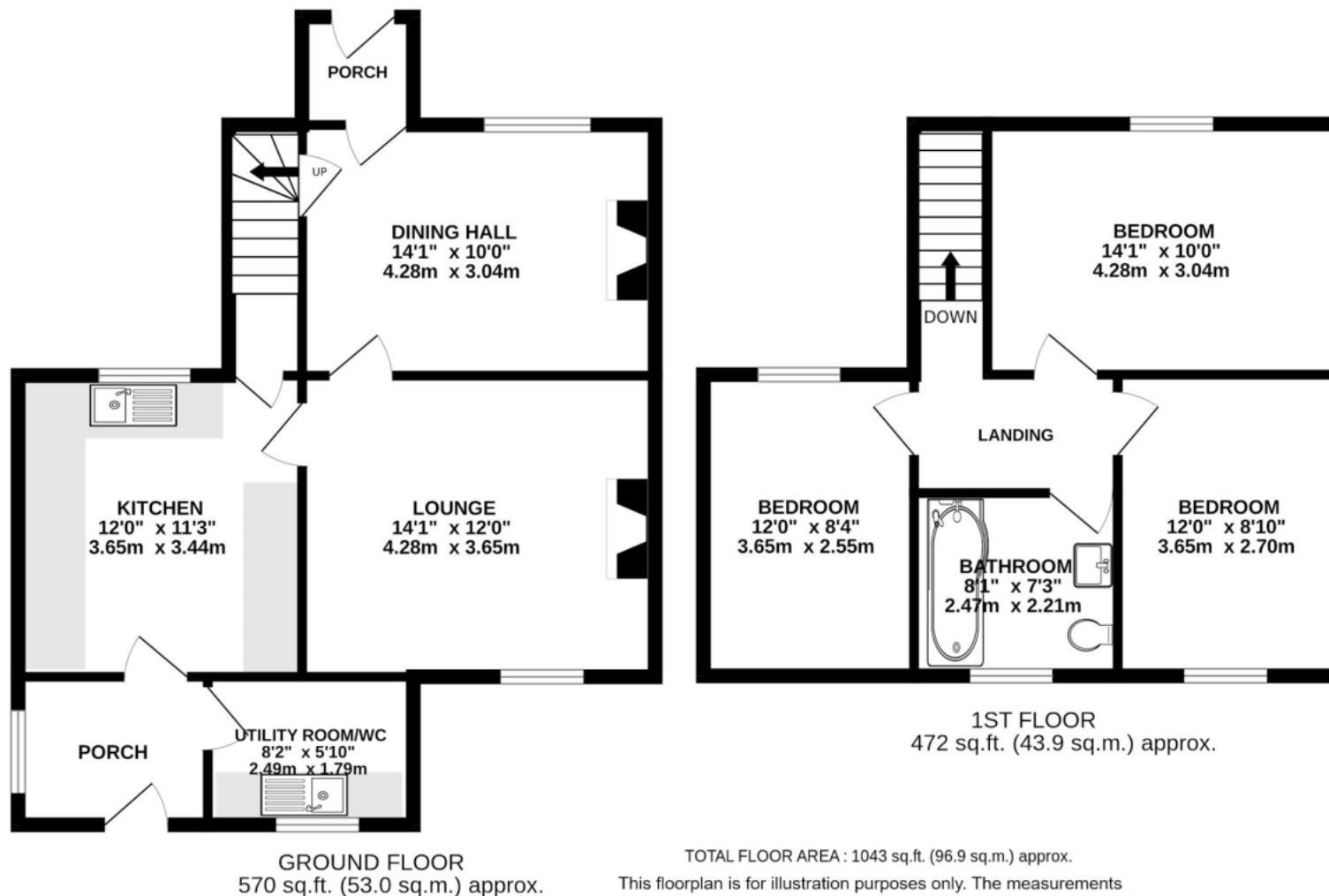
Location

scription New Fiddlers Hill comprises a handful of Victorian former farmhouse cottages. Accessed off of the Luton Road this truly gorgeous setting offers the most tranquil views over the rolling Hertfordshire countryside. within walking distance to b









TOTAL FLOOR AREA : 1043 sq.ft. (96.9 sq.m.) approx.
 This floorplan is for illustration purposes only. The measurements and position of each element are approximate and must be viewed as such.

Important Information These particulars do not constitute an offer or contract in whole or part. The statements contained herein are made without responsibility on the part of Ashtons or the vendors and they cannot be relied upon as representatives of fact. In respect of floor plans, these are for illustrative purposes only. The measurement and position of each element is approximate and must be viewed as such. Intending purchasers should therefore satisfy themselves by inspection or otherwise as to their correctness. The vendors do not make or give, and neither Ashtons nor any person in their employment has any authority to make or give, any representation or warranty whatsoever in relation to this property. We offer a wide range of services through third party providers including solicitors, surveyors, removal firms, mortgage providers and EPC suppliers. We receive additional payments for administering suppliers quoting software and making referrals. You are not under any obligations to use these services and it is your discretion whether you choose to deal with these parties or your own preferred supplier. You should be aware the average payment we received in 2024 equated to £29.76 per referral.